



Eastern Young Cattle Indicator	Unit	3 Sep 2015	27 Aug 2015	4 Sep 2014
EYCI	¢/kg cwt	576.50	571.75	361.5

National saleyard indicators	Live weight	Muscle/Fat	Unit	TW	LW	LY
Trade steer	330-400kg	C3	¢/kg lwt	326	318	200
			¢/kg cwt	603	584	370
Medium steer	400-500kg	C3	¢/kg lwt	303	297	187
			¢/kg cwt	562	547	342
Heavy steer	500-600kg	C4	¢/kg lwt	314	317	202
			¢/kg cwt	574	580	367
Medium cow	400-520kg	D3	¢/kg lwt	234	236	161
			¢/kg cwt	482	482	329
Feeder steer	330-400kg	C2	¢/kg lwt	316	316	198

Eastern states OTH indicators	Carcase weight	Muscle	Unit	TW	LW	LY
Trade steer	240-260kg	A-C	¢/kg cwt	528	525	339
Medium steer	260-280kg	A-C	¢/kg cwt	540	535	341
Heavy steer	300-400kg	A-C	¢/kg cwt	548	542	349
Medium cow	260-280kg	A-E	¢/kg cwt	468	460	293
MSA Trade steer	240-260kg	A-C	¢/kg cwt	570	570	386

Feeder cattle indicators - paddock sales						
for week of		27/08/2015		TW	LW	LY
Domestic			Unit			
Steers 280-350kg			¢/kg lwt	300	299	201
Heifers 280-350kg			¢/kg lwt	285	284	183
Export			Unit			
Shortfed 100-120 DOF			¢/kg lwt	315	315	202
Mediumfed 120-220 DOF			¢/kg lwt	314	315	218
Longfed 220+ DOF			¢/kg lwt	333	333	226

State saleyard indicators				Queensland			NSW			Victoria			SA			Tasmania		
Category	Live weight	Muscle/Fat	Unit	TW	LW	LY	TW	LW	LY	TW	LW	LY	TW	LW	LY	TW	LW	LY
Trade steer	330-400kg	C3	¢/kg lwt	315	307	189	325	322	201	334	319	200	323	316	195	317	316	188
			¢/kg cwt	569	557	344	603	595	371	626	591	369	591	574	354	580	579	350
Medium steer	400-500kg	C3	¢/kg lwt	281	273	186	313	312	190	315	312	187	nq	333	191	nq	nq	183
			¢/kg cwt	512	500	337	586	580	352	581	582	351	nq	606	347	nq	nq	344
Heavy steer	500-600kg	C4	¢/kg lwt	292	284	205	330	330	202	320	325	196	nq	nq	196	292	nq	nq
			¢/kg cwt	524	513	369	607	605	369	596	596	364	nq	nq	363	531	nq	nq
Medium cow	400-520kg	D3	¢/kg lwt	233	237	163	239	239	160	244	244	158	255	234	139	248	260	135
			¢/kg cwt	476	481	332	502	504	326	500	507	324	509	468	278	517	557	281
Feeder steer	330-400kg	C2	¢/kg lwt	302	298	199	323	322	198	317	329	193	310	315	180	nq	nq	nq

State over-the-hooks indicators				Queensland			NSW			Victoria			SA			Tasmania		
Category	Carcase weight	Muscle	Unit	TW	LW	LY	TW	LW	LY	TW	LW	LY	TW	LW	LY	TW	LW	LY
Trade steer	240-260kg	A-C	¢/kg cwt	512	500	347	519	525	351	554	551	351	nq	nq	305	nq	nq	nq
Medium steer	260-280kg	A-C	¢/kg cwt	506	493	343	517	520	331	538	536	332	nq	nq	330	600	590	370
Heavy steer	300-400kg	A-C	¢/kg cwt	519	506	356	526	529	340	546	544	340	nq	nq	340	600	590	370
Medium cow	260-280kg	A-E	¢/kg cwt	474	465	302	451	448	266	452	452	299	471	471	302	490	465	295
EU steer	300-340kg	A-C	¢/kg cwt	593	588	nq	570	nq	400	nq	nq	nq	nq	nq	nq	nq	nq	nq
MSA Trade steer	240-260kg	A-C	¢/kg cwt	551	549	401	563	566	376	nq	nq	nq	555	555	370	610	610	395

WA saleyard indicators	Unit	TW	LW	LY
Pastoral cow	¢/kg lwt	186	197	160
Heavy cow	¢/kg lwt	212	214	187
Heavy yearling	¢/kg lwt	297	286	234
Feeder yearling	¢/kg lwt	277	307	186

WA over-the-hooks indicators	Unit	TW	LW	LY
Grassfed yearling	¢/kg cwt	550	550	nq
Grainfed yearling	¢/kg cwt	550	550	455
MSA yearling	¢/kg cwt	550	550	455
Medium cow	¢/kg cwt	nq	nq	218

Live Export Price Quotes	for week of		27/08/2015	Unit	TW	LW	LY
Light Steer	260 - 360 kg	Townsville	¢/kg lwt	240	240	170	
	260 - 360 kg	Darwin	¢/kg lwt	270	260	205	
	260 - 360 kg	Broome	¢/kg lwt	nq	nq	nq	
Light Heifer	260 - 360 kg	Townsville	¢/kg lwt	nq	nq	145	
	260 - 360 kg	Darwin	¢/kg lwt	235	235	185	
	260 - 360 kg	Broome	¢/kg lwt	nq	nq	nq	

TW = This week, LW = Last week, LY = Last year

Eastern Young Cattle Indicator (EYCI)

The Eastern Young Cattle Indicator, or EYCI, is a seven-day rolling average of 24 young cattle categories from 24 saleyards across Queensland, New South Wales and Victoria. It is expressed in cents per kilogram carcass (or dressed) weight (¢/kg cwt) and is rounded to the nearest ¼ cent.

The EYCI is designed to be applicable to a wide range of cattle and beef industry participants, and has sufficient diversity (both geographic and cattle type) to prevent manipulation by activity in the physical cattle market.

The young cattle market was chosen as the base for the EYCI as it is the largest, most transparent of the physical cattle markets and attracts the widest range of industry participants.

What is a seven-day rolling average?

At any point in time, a seven-day rolling average includes data from the past seven days. In the case of the EYCI, this refers to seven calendar days, or one week.

The EYCI includes vealer and yearling heifers and steers, grade score C2 or C3, with liveweight from 200kg (See table below). The EYCI currently includes cattle purchased for restocking, lot feeding and slaughter from the relevant prime sales.

Individual states were integrated into the EYCI at the commencement of NLRS reporting in that state:

NSW – August 1996

Victoria – May 1997

Queensland – October 1999

Cattle categories in the EYCI

Classification	Muscle/fat	Liveweight (kg)
Vealer steers	C2 & C3	200.1-280
		280.1-330
Vealer heifers	C2 & C3	200.1-280
		280.1-330
Yearling steers	C2 & C3	200.1-330
		330.1-400
Yearling heifers	C2 & C3	200.1-330
		330.1-400

Category specifications

The following tables show the grades that are used for the Meat & Livestock Weekly Statistics.

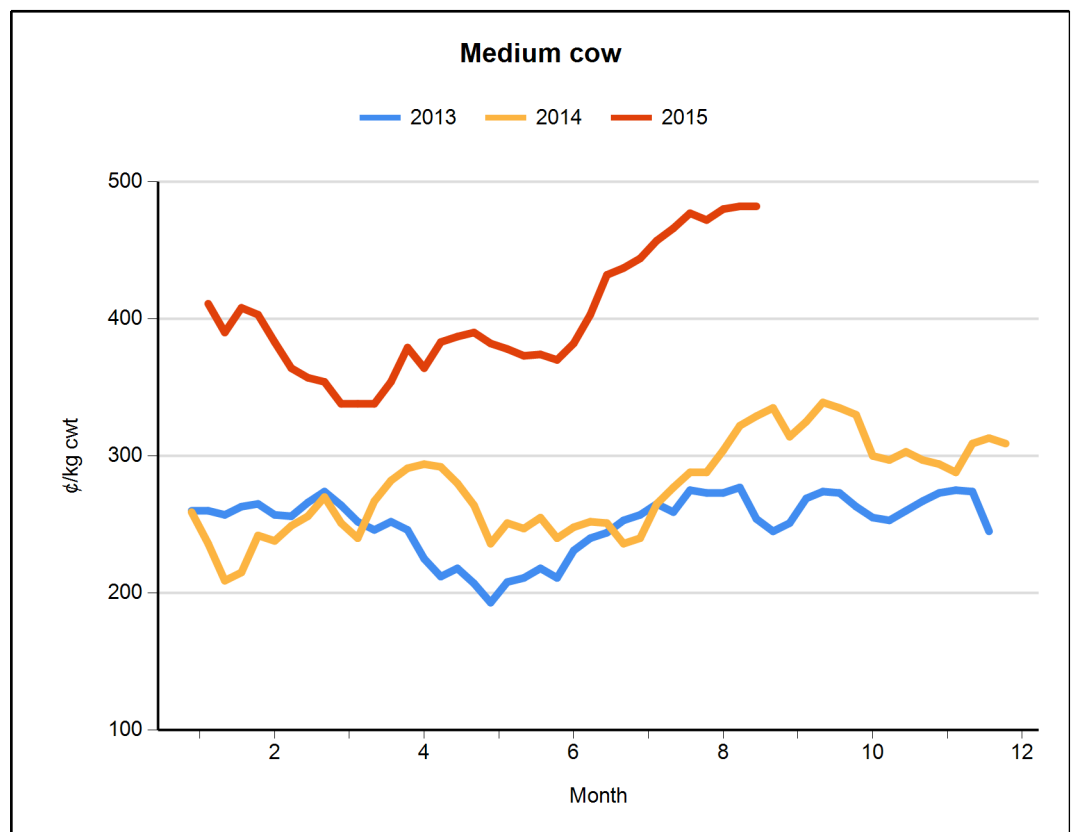
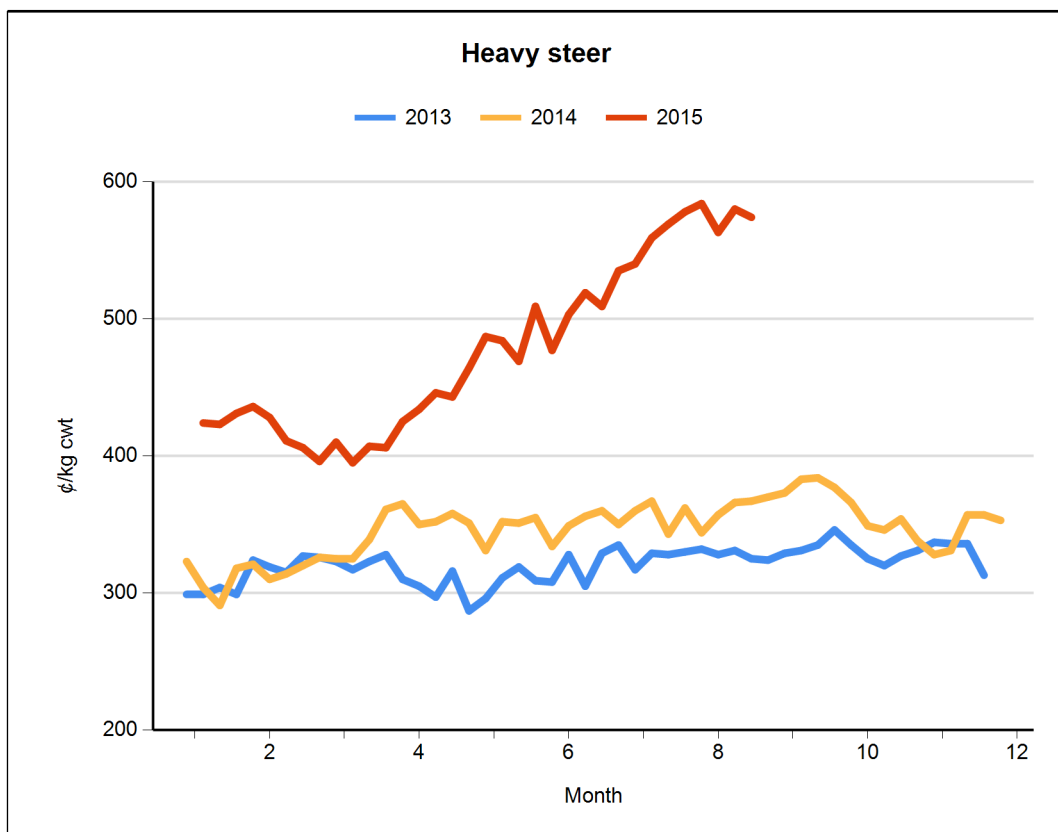
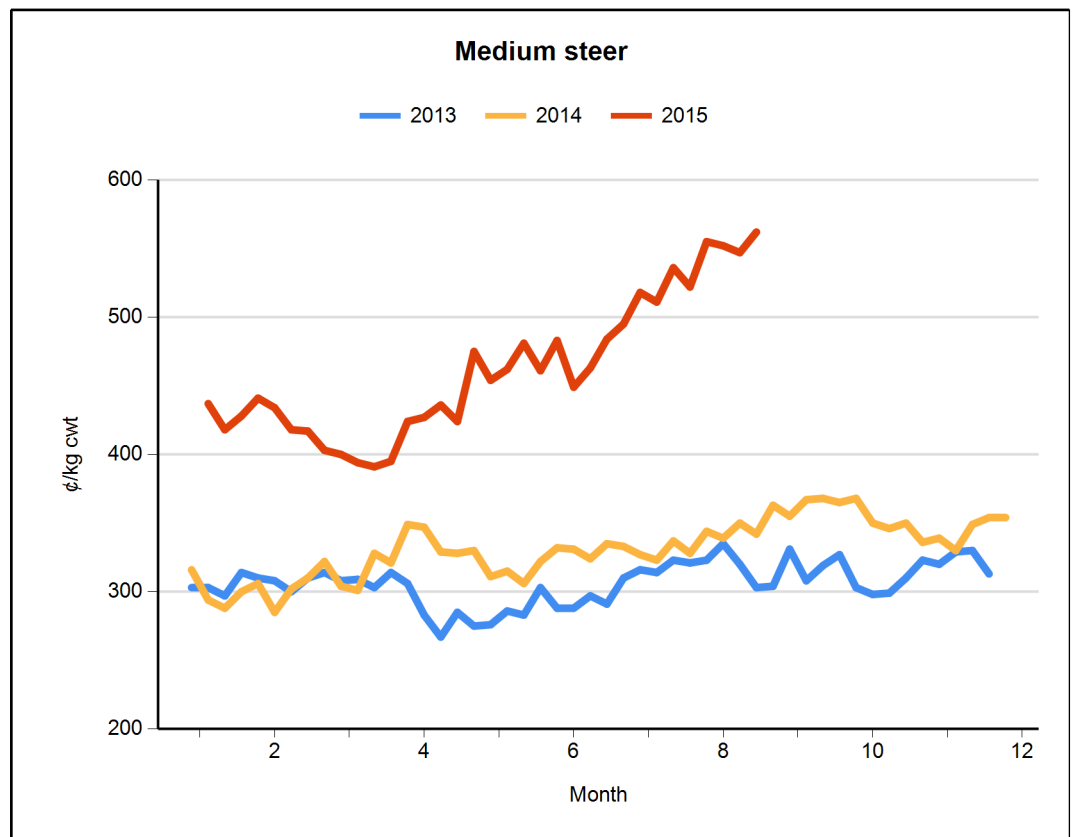
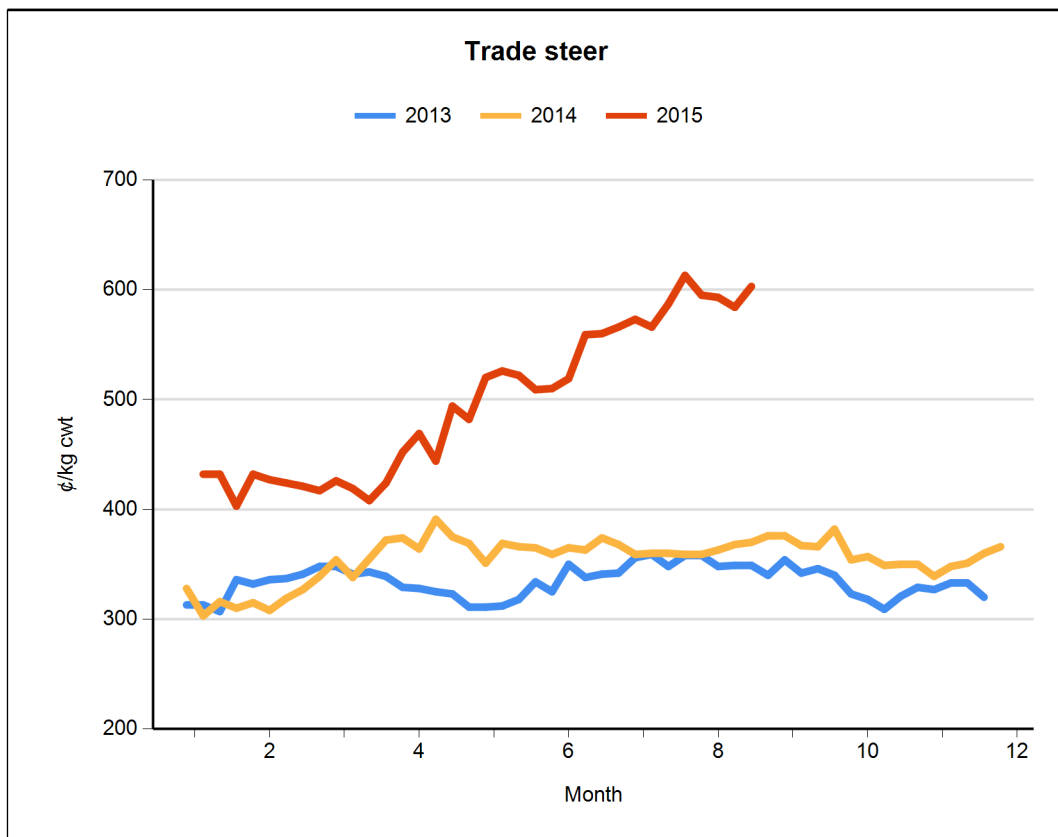
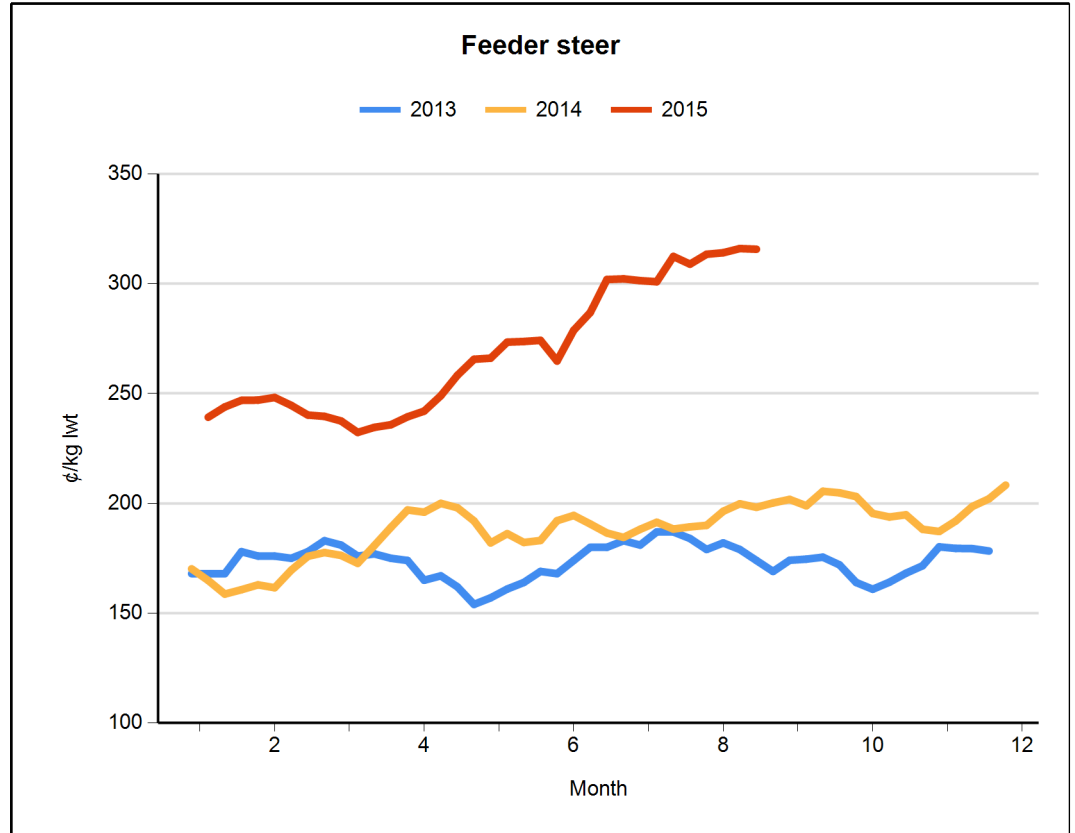
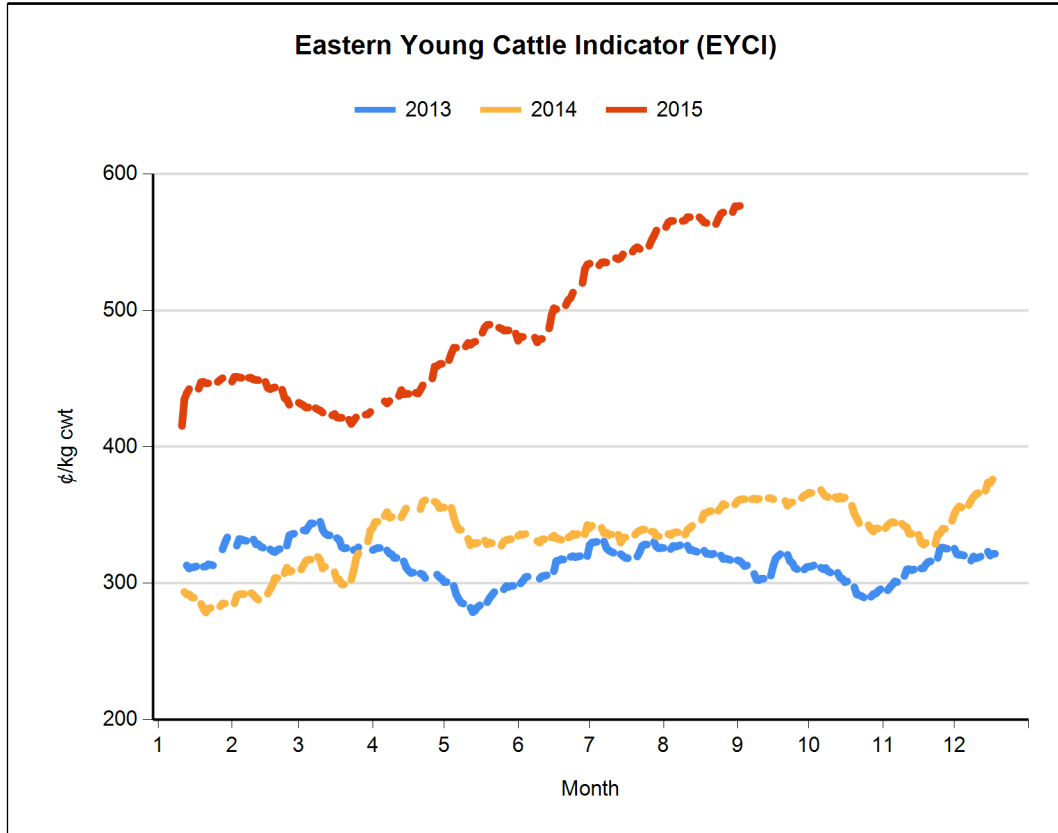
Cattle indicator weights

Stock type	Weight	Muscle/fat
Trade steer	330-400kg	C3
Medium steer	400-500kg	C3
Heavy steer	500-600kg	C4
Medium cow	400-520kg	D3
Feeder steer*	330-400kg	C2

*Yearling steer, purchased by lotfeeders

Cattle OTH indicator weights

Stock type	Weight	Muscle/fat
EU steer	240-440kg	A-C 6-22mm
Trade steer	220-280kg	A-C 3-12mm
Medium steer	260-300kg	A-C 7-22mm
Heavy steer	300-420kg	A-C 7-22mm
Medium cow	240-280kg	A-E 3-22mm





Eastern States Trade Lamb Indicator (¢/kg cwt)	3 Sep 2015	27 Aug 2015	4 Sep 2014
ESTLI	590	594	470

National saleyard sheep and lamb indicators (¢/kg cwt)		TW	LW	LY
Restocker/feeder lamb (\$/head)	0-18kg	83	78	60
Merino lamb	16-22kg	539	519	393
Light lamb	12-18kg	545	540	437
Trade lamb	18-22kg	589	594	474
Heavy lamb	22+kg	582	600	469
Mutton	18-24kg	370	366	330

National OTH sheep and lamb indicators (¢/kg cwt)		TW	LW	LY
Medium trade lamb	18-20kg	583	582	526
Heavy trade lamb	20-22kg	585	584	526
Heavy lamb	22-24kg	583	582	524
Mutton	18-24kg	338	345	306

Category specifications

The following tables show the grades that are used for the Meat & Livestock Weekly Statistics.

TW = This week, LW = Last week, LY = Last year

Sheep and lamb indicator weights

Stock type	Weight	Fat score
Restocker/feeder lamb	0-18kg	1-2
Merino lamb	16-22kg	2-3
Light lamb*	12-18kg	2-3
Trade lamb#	18-22kg	2-4
Heavy lamb#	22kg +	2-4
Mutton	18-24kg	2-3

Sheep and lamb OTH indicator weights

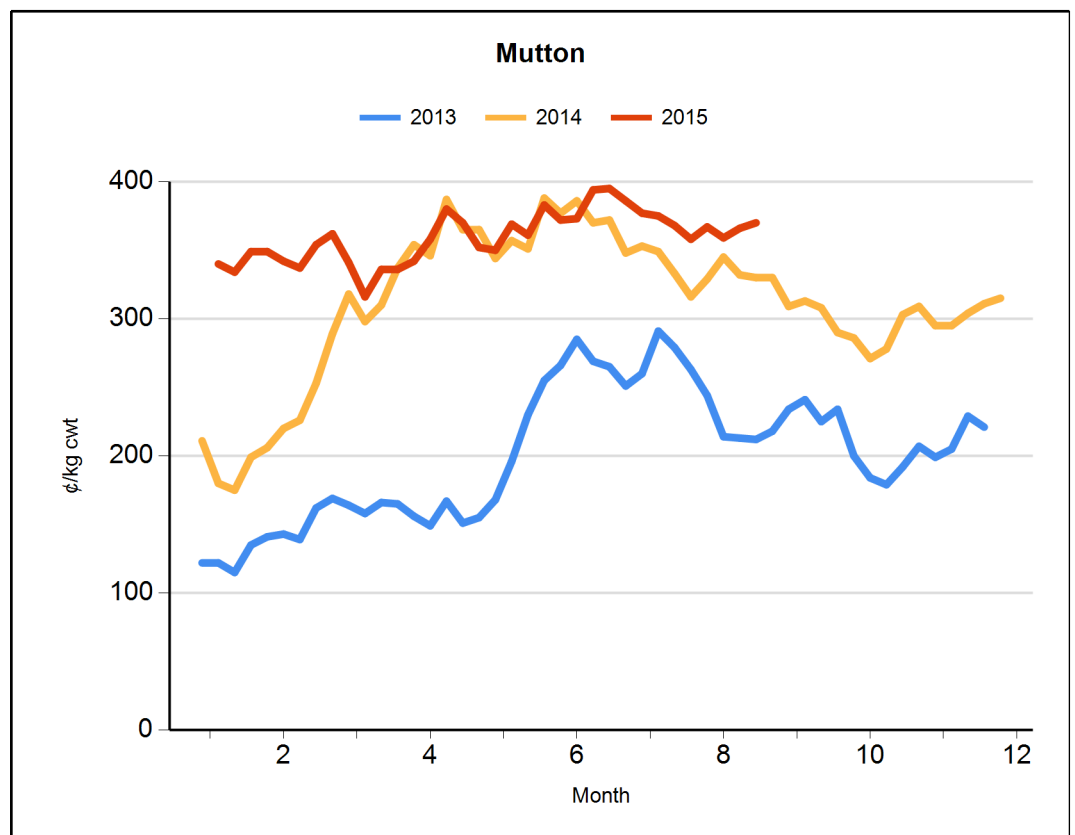
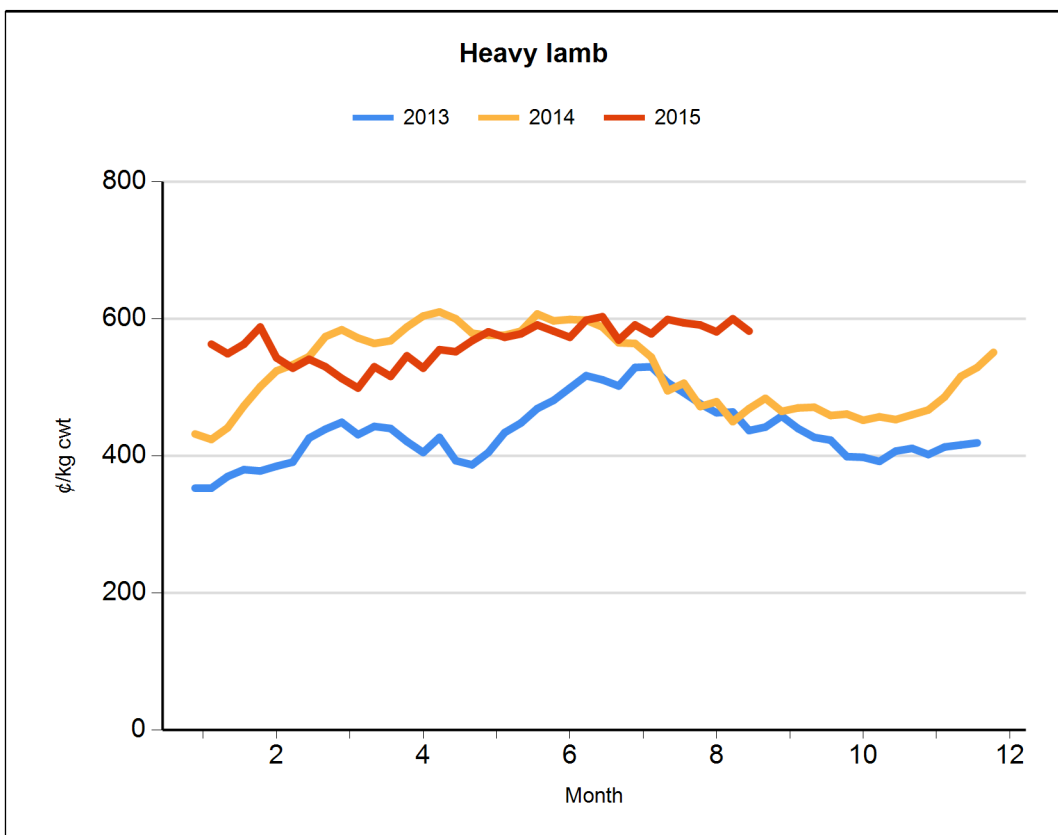
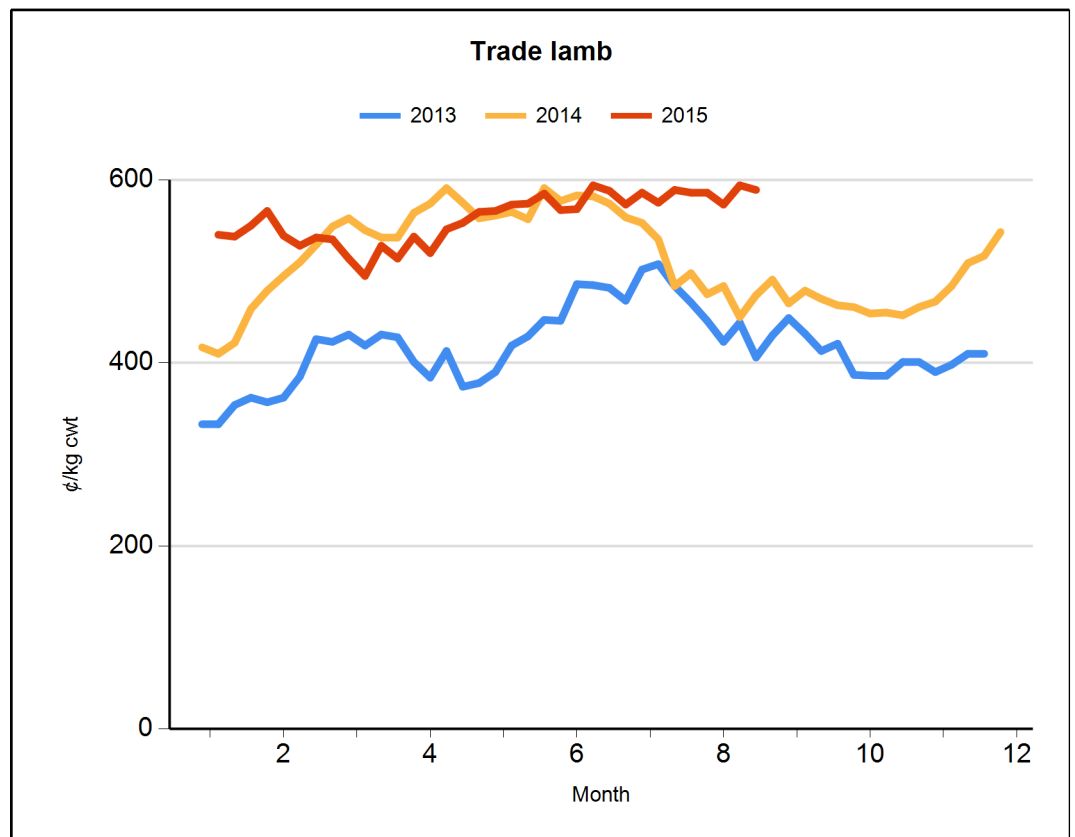
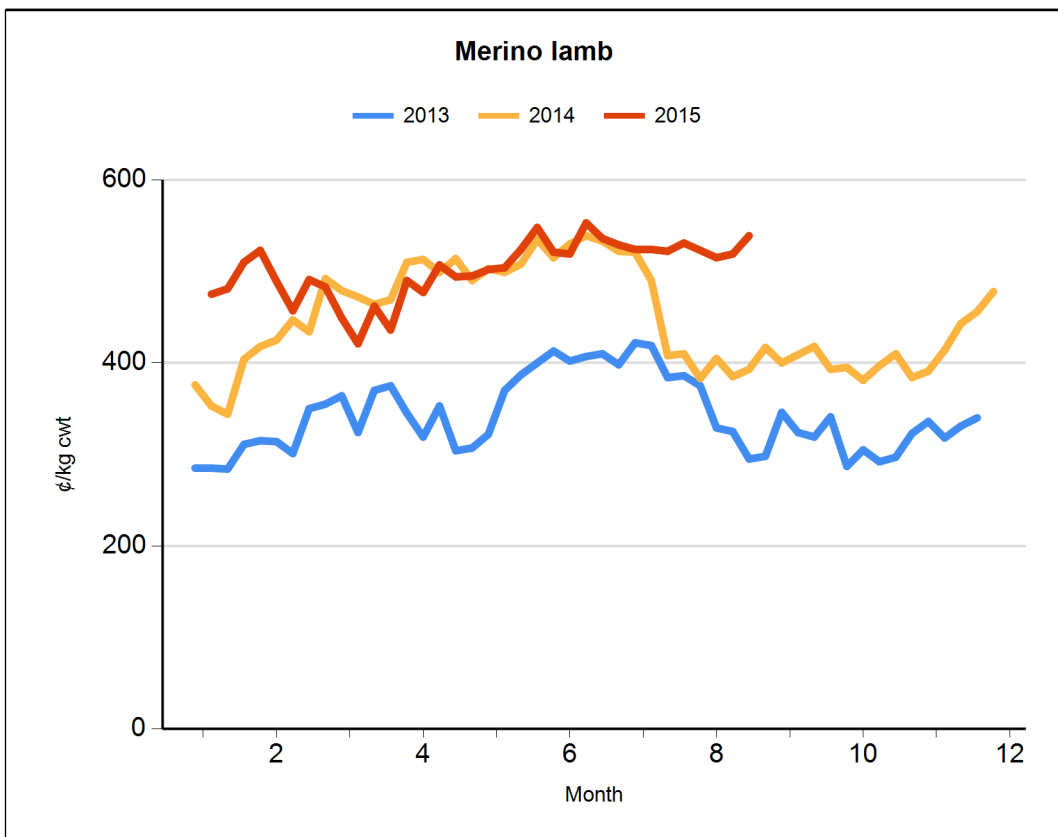
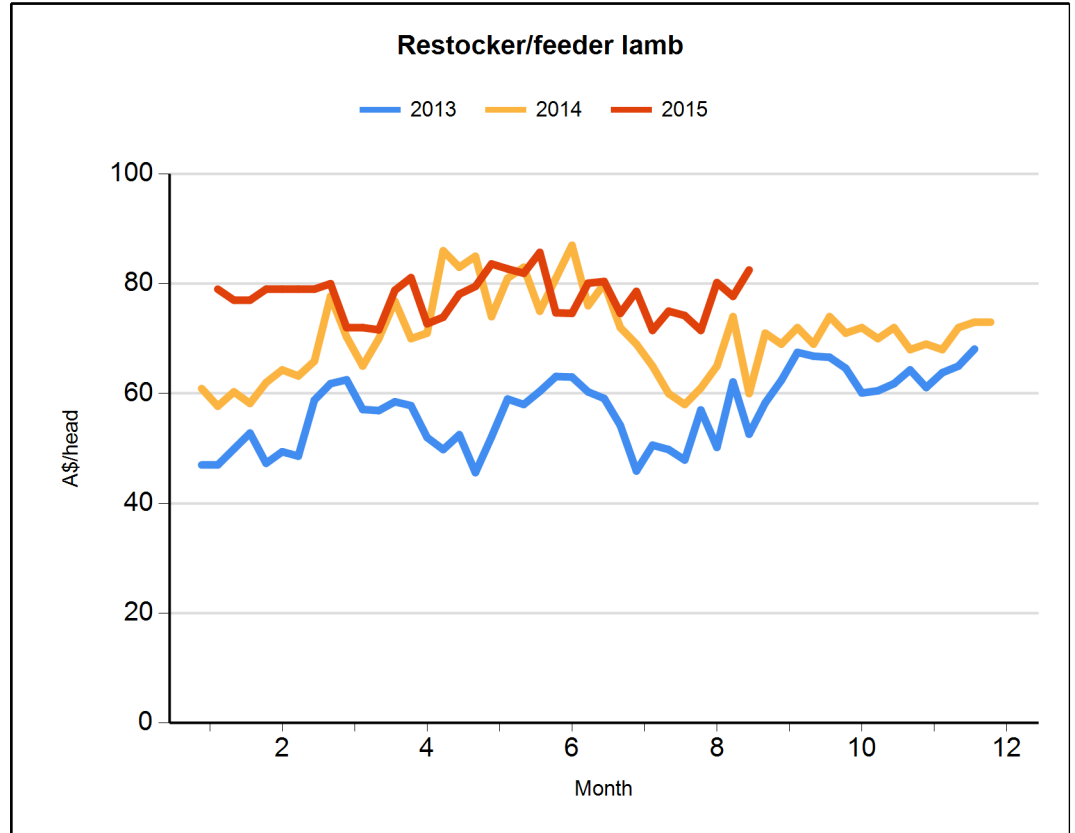
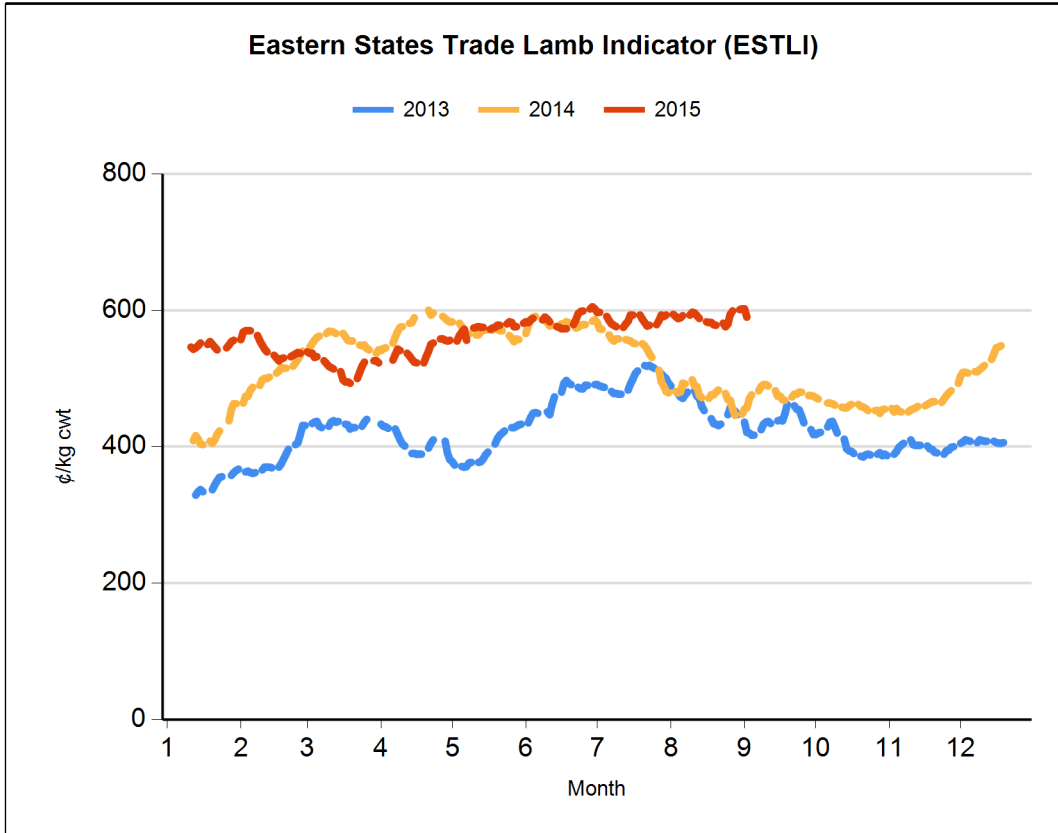
Stock type	Weight	Fat score
Medium trade lamb	18-20kg	2-4
Heavy trade lamb	20-22kg	2-4
Heavy lamb	22kg+	2-4
Mutton	18-24kg	2-4

*1st & 2nd cross & Merino, #1st & 2nd cross

State saleyard sheep and lamb indicators (¢/kg cwt)		Victoria			NSW			SA			WA			Tasmania		
		TW	LW	LY	TW	LW	LY	TW	LW	LY	TW	LW	LY	TW	LW	LY
Restocker lamb (\$/head)	0-18kg	81	84	66	91	82	59	80	88	54	58	66	55	nq	nq	76
Merino lamb	16-22kg	514	496	392	547	529	393	486	459	394	496	474	401	nq	nq	nq
Light lamb	12-18kg	554	531	440	549	549	447	532	510	420	496	506	413	547	579	460
Trade lamb	18-22kg	592	581	477	595	606	478	524	525	436	546	528	484	572	629	523
Heavy lamb	22+kg	590	592	484	588	611	469	514	551	427	528	510	482	610	621	531
Mutton	18-24kg	380	377	313	387	393	335	318	308	254	311	323	366	337	396	318

Over-the-hooks sheep and lamb indicators (¢/kg cwt)		Victoria			NSW			SA			WA			Tasmania		
		TW	LW	LY	TW	LW	LY	TW	LW	LY	TW	LW	LY	TW	LW	LY
Medium trade lamb	18-20kg	616	611	524	569	567	497	595	595	490	547	547	553	590	590	565
Heavy trade lamb	20-22kg	616	611	524	578	576	497	595	595	490	547	547	553	590	590	565
Heavy lamb	22-24kg	622	622	523	577	574	489	595	595	490	530	530	553	590	590	565
Mutton	18-24kg	360	358	313	365	365	294	325	360	280	290	290	277	350	350	365

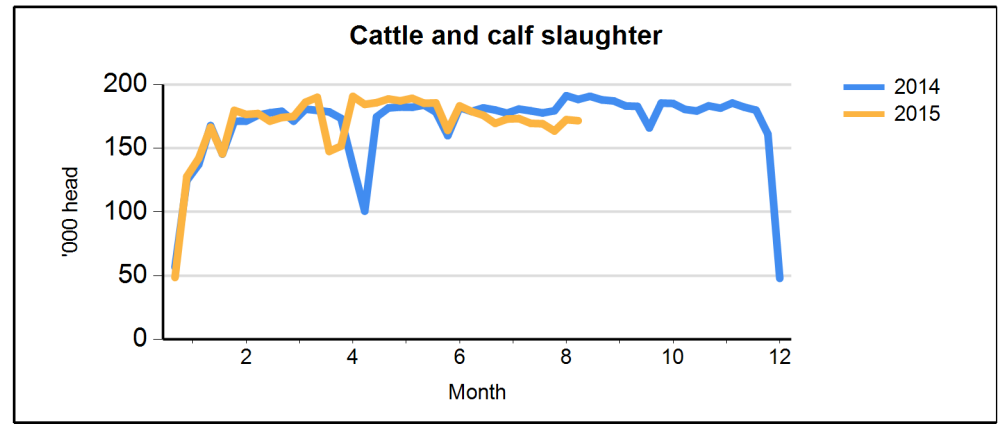
Live export price quotes (A\$/head)		TW	LW	LY
Live wether	Muchea	97	109	86



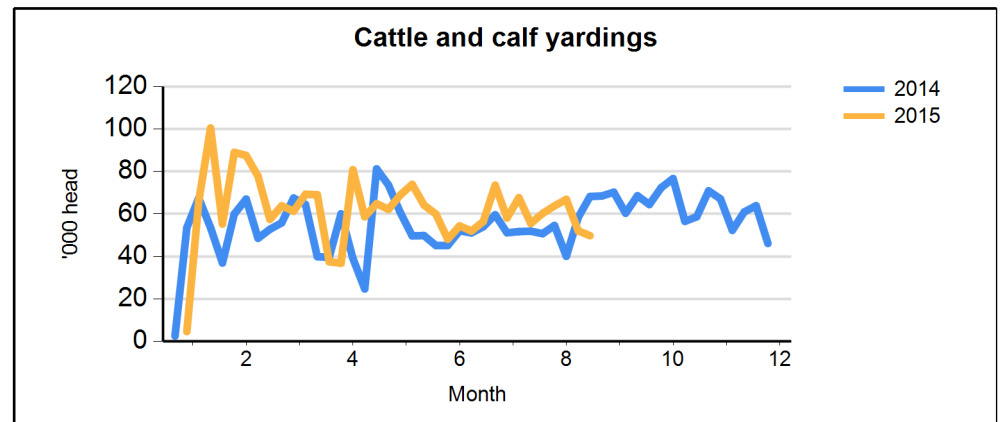


Cattle movements

Cattle slaughter		for w/e	28/08/2015	TW	LW	LY
Queensland	Cattle		85,021	85,782	85,805	
	Calves		403	386	385	
NSW	Cattle		32,574	32,981	39,415	
	Calves		2,739	2,636	4,026	
Victoria	Cattle		24,241	24,783	31,262	
	Calves		7,488	7,652	9,861	
SA	Cattle		10,153	9,610	8,393	
	Calves		34	33	58	
Tasmania	Cattle		3,979	4,252	4,109	
	Calves		5,049	4,393	5,088	

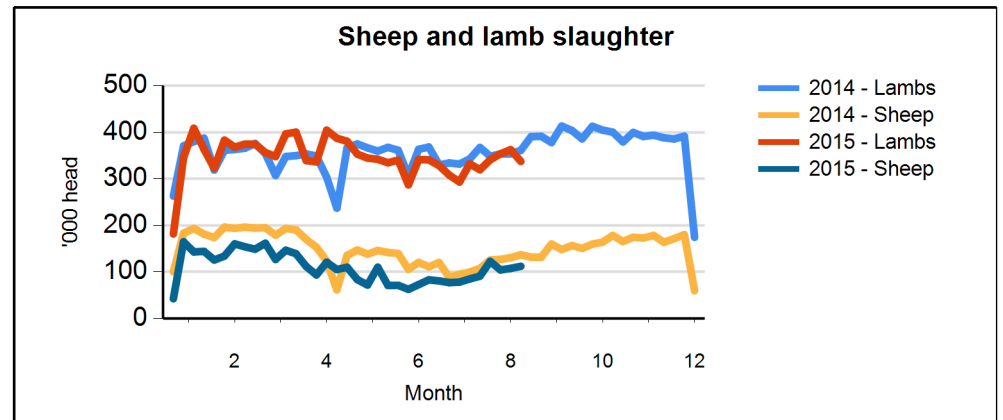


Cattle saleyard throughput		for w/e	3/09/2015	TW	LW	LY
Queensland	Cattle		13,985	20,532	16,842	
NSW	Cattle		19,641	15,279	30,368	
Victoria	Cattle		9,335	9,154	14,094	
SA	Cattle		3,914	4,044	4,240	
WA	Cattle		2,747	2,838	2,644	
Tasmania	Cattle		160	190	63	

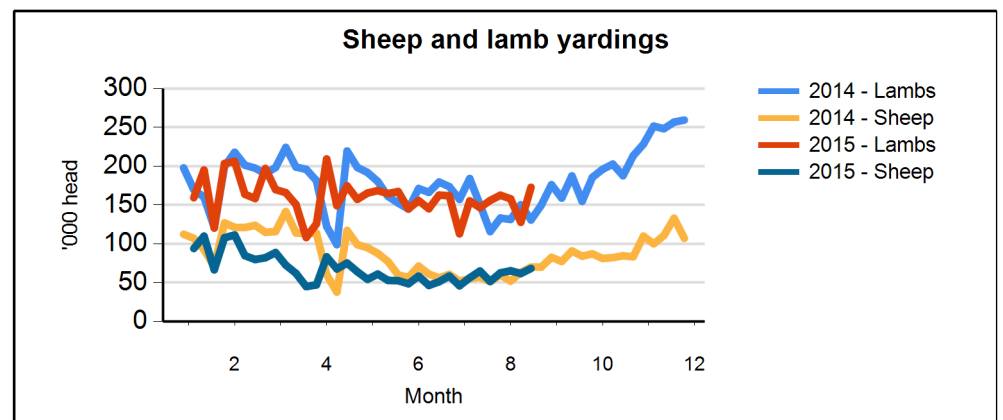


Sheep and lamb movements

Sheep and lamb slaughter		for w/e	28/08/2015	TW	LW	LY
Victoria	Lambs		164,581	169,603	179,243	
	Sheep		40,912	39,287	49,801	
NSW	Lambs		76,457	98,646	103,995	
	Sheep		33,275	32,468	42,480	
SA	Lambs		73,859	72,920	55,035	
	Sheep		29,141	27,281	33,119	
Queensland	Lambs		7,026	5,893	6,084	
	Sheep		8,248	7,636	10,378	
Tasmania	Lambs		15,298	15,412	16,617	
	Sheep		435	849	1,065	

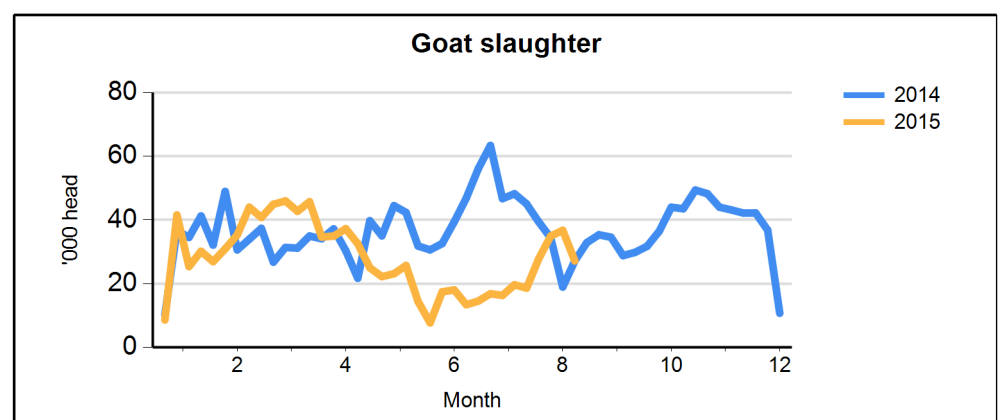


Sheep and lamb saleyard throughput		for w/e	3/09/2015	TW	LW	LY
Victoria	Lambs		29,255	18,551	23,752	
	Sheep		21,588	22,205	22,388	
NSW	Lambs		117,456	86,532	84,384	
	Sheep		33,036	24,854	29,072	
SA	Lambs		15,732	11,338	10,959	
	Sheep		3,752	3,527	4,621	
WA	Lambs		9,650	10,650	11,022	
	Sheep		9,642	11,052	13,593	
Tasmania	Lambs		850	820	690	
	Sheep		300	180	300	



Goat movements

Goat slaughter		for w/e	28/08/2015	TW	LW	LY
Queensland	Goats		16,556	17,289	13,591	
NSW	Goats		3,182	3,184	1,664	
Victoria	Goats		3,440	8,756	11,168	
SA	Goats		3,978	7,525	721	
Tasmania	Goats		nq	nq	nq	





Over-the-hooks goat indicators (A¢/kg cwt)	TW	LF	LY
8.1-10kg	454	443	336
10.1-12kg	453	445	335
12.1-16kg	453	445	335
16.1-20kg	453	445	339
20.1kg+	453	445	335

Skin indicators - Lambs		TW	LW	LY
2" +	16.1 - 20kg	500	500	250
	20.1 - 24kg	675	675	513
	24.1kg +	806	806	613
1" - 2"	16.1 - 20kg	388	388	163
	20.1 - 24kg	563	563	375
	24.1kg +	675	675	475
0.5" - 1"	16.1 - 20kg	200	200	200
	20.1 - 24kg	313	313	213
	24.1kg +	438	438	250
New Season	16.1 - 20kg	700	700	400
	20.1 - 24kg	875	925	550
	24.1kg +	1000	1025	700

Skin indicators - Merino sheep (average 25 micron)		TW	LW	LY
1.5" - 2"	16.1 - 20kg	700	700	400
	20.1 - 24kg	925	925	575
	24.1kg +	1075	1075	675

Eastern Market Wool Indicator (A¢/kg)	TW	LW	LY
AWEX E.M.I	1249	1222	1011
Source: Australian Wool Exchange Ltd			

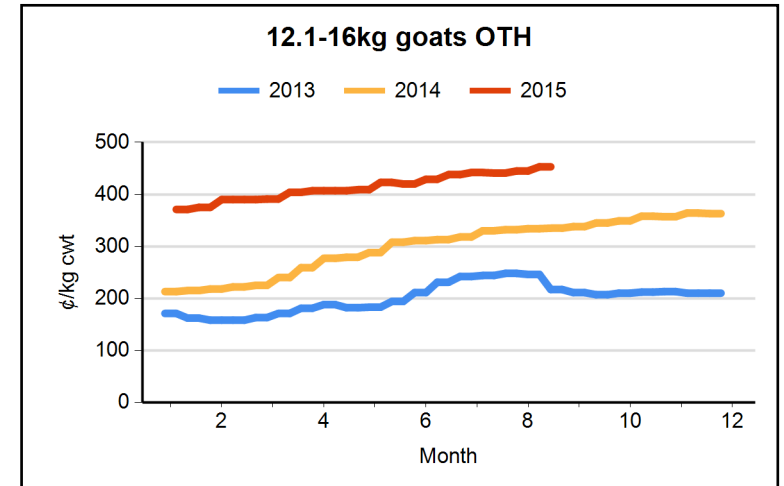
Fodder prices (A\$/tonne)	Cereal			Lucerne			Straw			Pasture		
	TW	LW	LY	TW	LW	LY	TW	LW	LY	TW	LW	LY
Darling Downs	365	365	425	480	475	475	180	180	240	290	290	nq
Central West NSW	270	270	315	370	370	375	150	150	120	nq	nq	245
Goulburn Valley	240	235	180	335	335	300	90	100	100	165	165	160
South East SA	275	250	140	325	325	270	120	120	110	210	210	145
South West WA	210	210	180	510	510	525	100	100	100	180	180	nq
Source: Dairy Australia												

Tallow (A\$/tonne, delivered in store)	TW	LW	LY
Prime - Melbourne	615	nq	nq
Prime - Brisbane	615	nq	nq
Bleachable fancy	575	nq	nq
Source: Trade			

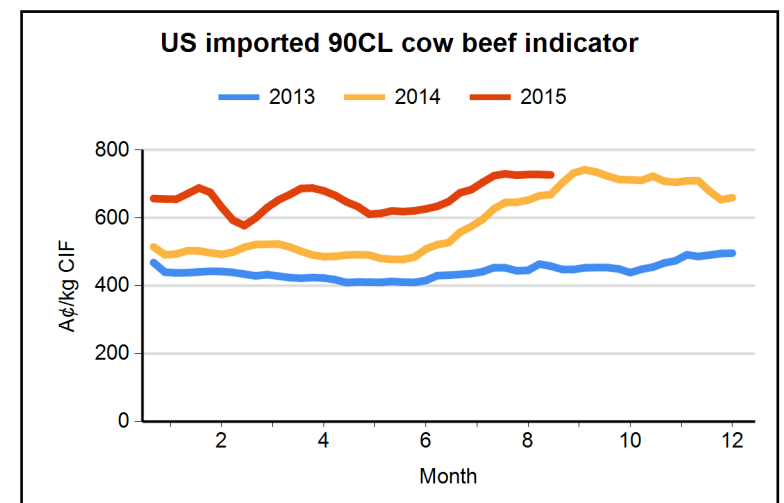
Grain prices - Darling Downs (A\$/tonne)	TW	LW	LY
Barley	273	276	300
Sorghum	280	282	288
Wheat	307	316	315

Grain prices - Riverina (A\$/tonne)	TW	LW	LY
Wheat	276	277	270
Barley	250	257	209
Source: Profarmer Australia			

US imported beef prices (CIF)		TW	LW	LY
Bull 95CL	US¢/lb	258.8	263.0	297.5
	A¢/kg	805.7	808.1	702.2
Cow 90CL	US¢/lb	233.5	237.0	283.5
	A¢/kg	727.1	728.2	669.1
CC/CF 85CL	US¢/lb	204.5	209.5	264.0
	A¢/kg	636.8	643.7	623.1
Shank 90CL	US¢/lb	230.5	234.5	277.5
	A¢/kg	717.7	720.5	655.0
Trim 85CL	US¢/lb	204.0	208.0	262.5
	A¢/kg	635.2	639.1	619.5
Trim 80CL	US¢/lb	168.0	169.5	242.5
	A¢/kg	523.1	520.8	572.3
Trim 75CL	US¢/lb	141.5	142.5	217.5
	A¢/kg	440.6	437.8	513.3
Trim 65CL	US¢/lb	99.5	99.5	160.0
	A¢/kg	309.8	305.7	377.6
Outside flats	US¢/lb	275.0	275.0	nq
	A¢/kg	856.3	845.0	nq
Knuckles	US¢/lb	275.0	275.0	302.5
	A¢/kg	856.3	845.0	714.0
Inside cap off	US¢/lb	310.0	312.5	322.5
	A¢/kg	965.3	960.2	761.2
Source: Steiner Consulting Group				



PLEASE NOTE
US imported beef prices are now reported only in CIF terms.
They are no longer converted to FAS terms.
Prices from LW in A¢/kg are revised to account for exchange rates from Friday-Sunday





Exchange rates	2015	2015	2014
1 AUD buys:	August	July	August
US dollar (USD)	0.731	0.742	0.931
Japanese yen (JPY)	90.042	91.475	95.832
Korean won (KRW)	861.036	849.329	954.021
UK pound (GBP)	0.469	0.477	0.557
Euro (EUR)	0.657	0.674	0.699
NZ dollar (NZD)	1.113	1.116	1.103
Indonesia rupiah (IDR)	10059.413	9918.577	10913.778
Source: XE.com			

UNITED STATES

US imported beef prices (CIF)		2015	2015	2014
		August	July	August
Bull 95CL	US¢/lb	266.4	251.7	288.2
	A¢/kg	800.8	785.1	675.6
Cow 90CL	US¢/lb	241.5	231.3	275.5
	A¢/kg	728.0	724.7	645.9
CC/CF 85CL	US¢/lb	212.4	203.9	259.3
	A¢/kg	638.0	640.2	603.3
Shank 90CL	US¢/lb	237.6	227.8	274.6
	A¢/kg	716.0	705.1	649.5
Trim 85CL	US¢/lb	210.6	202.6	258.3
	A¢/kg	632.0	634.1	600.9
Trim 80CL	US¢/lb	173.0	169.7	233.5
	A¢/kg	520.9	522.4	547.6
Trim 75CL	US¢/lb	144.4	144.6	211.6
	A¢/kg	435.3	430.3	491.9
Trim 65CL	US¢/lb	101.0	103.6	161.8
	A¢/kg	303.2	305.0	381.6
Outside flats	US¢/lb	276.9	281.0	271.7
	A¢/kg	833.1	838.0	0.0
Knuckles	US¢/lb	284.4	288.5	289.5
	A¢/kg	863.1	868.2	683.9
Inside cap off	US¢/lb	316.3	323.5	325.0
	A¢/kg	953.2	973.9	776.3
Source: Steiner Consulting Group				

US cattle indicators	2015	2015	2014
US¢/lb lwt	August	July	August
CME feeder cattle	215.9	221.0	221.1
5 market fed steer	148.7	148.9	157.5
Cutter 90% lean	194.0	200.3	217.0
Boner 85% lean	189.3	193.0	204.8
Breaker 75% lean	189.3	193.0	199.8
Source: Steiner Consulting Group			



US domestic wholesale beef prices	2015	2015	2014
US¢/lb	August	July	August
90CL	282.0	289.9	296.8
85CL	245.4	261.9	275.8
75CL	202.0	202.6	210.0
50CL	72.4	68.2	143.6
2pc b/less chuck	285.8	288.0	297.0
insides	341.0	338.5	332.3
outsides	270.9	280.9	313.5
knuckles	311.4	314.5	342.5
Choice beef cutout	238.8	237.0	251.5

Source: Urner Barry's Yellow Sheet

US cattle futures	THIS	LAST	LAST
US¢/lb lwt	WEEK	WEEK	FORTNIGHT
Live cattle			
Feb-16	143.200	142.525	147.400
Apr-16	141.800	141.575	146.350
Jun-16	134.050	133.825	138.675
Aug-16	132.225	143.175	145.250
Oct-15	141.375	141.600	145.150
Dec-15	143.325	143.875	147.350
Feeder cattle			
Jan-16	187.625	186.250	195.375
Mar-16	185.250	185.850	192.975
Apr-16	185.650	185.325	192.700
May-16	185.375	184.600	191.975
Aug-16	185.425	210.275	213.800
Sep-15	200.750	199.600	206.900
Oct-15	196.350	195.900	203.875
Nov-15	193.650	191.900	201.800

Source: CME

US livestock slaughter ('000 head)	2015	2015	2014
	August	July	August
Cattle (weekly average)	533	539	582
Cattle (total year-to-date)	17286	16220	20224
Cows (weekly average)	88	89	97
Cows (total year-to-date)	3140	2964	3638
Sheep and lambs (weekly average)	36	37	39
Sheep and lambs (total year-to-date)	1224	1151	1424

Source: USDA
Last available US slaughter data are for 8 August 2015

US wholesale lamb prices	2015	2015	2014
US¢/lb	August	July	August
HRI leg	478	475	483
HRI rack	938	938	1021

Source: Urner Barry HRI Buyers' Guide

US lamb carcasses 55-65lb cwt	343	343	336
-------------------------------	------------	-----	-----

Source: USDA



JAPAN

Beef export price indicators to Japan		2015	2015	2014
US¢/lb C&F, A¢/kg C&F		August	July	August
Chilled				
grassfed fullset	US¢/lb	292	284	304
	A¢/kg	881	842	718
Frozen				
CF 85CL	US¢/lb	197	189	250
	A¢/kg	594	562	592
brisket	US¢/lb	175	188	251
	A¢/kg	528	557	593
65CL	US¢/lb	107	108	157
	A¢/kg	321	321	371

Source: Trade

Imported beef prices in Kanto wholesale market		2015	2015	2014
¥/kg spot, US¢/lb spot		August	July	August
From Australia chilled				
grassfed fullset	¥/kg	1162	1137	1087
	US¢/lb	428	418	478
grassfed navel end brisket	¥/kg	732	808	890
	US¢/lb	269	297	391
grassfed chuck roll	¥/kg	1075	1068	928
	US¢/lb	396	393	408
shortfed navel end brisket	¥/kg	802	885	915
	US¢/lb	295	326	402
shortfed chuck roll	¥/kg	1175	1175	1098
	US¢/lb	433	432	483
From Australia frozen				
brisket	¥/kg	783	804	820
	US¢/lb	288	296	361
cow meat (85CL)	¥/kg	798	766	803
	US¢/lb	294	282	353
From US chilled				
chuck rib	¥/kg	1927	2050	2050
	US¢/lb	710	754	901
short rib	¥/kg	2950	3440	3100
	US¢/lb	1087	1266	1362
steak ready	¥/kg	3650	3650	2750
	US¢/lb	1345	1343	1209
From US frozen				
chuck roll	¥/kg	nq	nq	nq
	US¢/lb	nq	nq	nq
short plate	¥/kg	620	636	993
	US¢/lb	228	234	437

Source: Chikusan Nippo



Imported offal prices from Kansai offal market		2015	2015	2014
¥/kg spot, US¢/lb spot		August	July	August
From Australia frozen				
tongue (Swiss cut)	¥/kg	1550	1525	1175
	US¢/lb	571	560	517
thick skirt	¥/kg	955	948	660
	US¢/lb	352	348	291
thin skirt	¥/kg	955	948	660
	US¢/lb	352	348	291
mountain chain tripe	¥/kg	1250	1250	1050
	US¢/lb	460	459	462
From NZ frozen				
tongue (Swiss cut)	¥/kg	1450	1425	1075
	US¢/lb	534	524	473
From Mexico frozen				
tongue (Swiss cut)	¥/kg	1550	1500	1175
	US¢/lb	571	551	517

Source: Shokuniku Sokuho

KOREA

Korean wholesale prices	2015	2015	2014
KRW/kg	August	July	August
Korean domestic wholesale			
Hanwoo carcase	18455	17100	14681
beef cattle carcase	10320	9631	8464
pig carcase	5489	5697	5311
Australian wholesale			
brisket deckle off	9350	9140	7550
rump	8975	9100	8550
chuck roll	10075	9640	8950
short rib	10450	10500	nq
US wholesale			
grainfed chuck roll	10275	10320	9600
grainfed short rib	12800	11820	17075
brisket deckle off	10500	10740	8350

Source: Korean trade, HKJM

NEW ZEALAND

NZ livestock prices	2015	2015	2014
A¢/kg	August	July	August
Cattle			
Bulls	487	459	381
Cows	374	345	274
Steers	517	482	403
Lambs			
NZ chilled export leg to EU (FAS)	854	856	863
NZ lamb 17.5kg cwt	480	457	524

Source: NZX Agrifax



URUGUAY

Uruguay cattle slaughter ('000 head)	2015 August	2015 July	2014 August
Weekly average	39	41	34
Total year-to-date	1450	1293	1407
Source: <i>World Beef Report</i>			

BRAZIL

Brazil livestock and meat prices	2015 August	2015 July	2014 August
Steer (Sao Paulo state) BRL/kg	4.72	4.92	4.08
Steer (Sao Paulo state) USD/kg	1.35	1.53	1.80
Calf (Mato Grosso state) BRL/kg	6.51	6.79	5.55
Calf (Mato Grosso state) USD/kg	1.86	2.12	2.45
Wholesale - Forequarter USD/kg	2.33	2.55	2.85
Wholesale - Hindquarter USD/kg	3.04	3.39	4.06

CHINA

China wholesale meat price indicators RMB/kg	2015 August	2015 July	2014 August
beef	53.64	53.82	54.25
chicken carcass	14.52	14.44	15.00
pork	24.25	22.28	19.84
sheepmeat	48.31	48.49	54.55

INDONESIA

Jakarta wet market beef prices rupiah/kg	2015 August	2015 July	2014 August
Feedlot beef blade	108,489	107,750	110,000
Feedlot beef chuck	117,655	116,250	118,000
Feedlot beef knuckle	122,487	121,500	116,000
Feedlot beef outside	89,991	92,000	nq
Feedlot beef shank	99,240	102,500	93,000
Feedlot beef sirloin	187,981	180,500	184,000
Feedlot beef tenderloin	224,644	222,500	213,000
Local beef blade	108,489	103,750	110,000
Local beef chuck	117,655	113,500	118,000
Local beef knuckle	122,487	121,500	116,000
Local beef outside	89,991	92,000	nq
Local beef shank	99,240	102,500	93,000
Local beef sirloin	187,981	180,500	184,000
Local beef tenderloin	224,644	222,333	213,000