



Eastern Young Cattle Indicator	Unit	2 Jul 2015	25 Jun 2015	3 Jul 2014
EYCI	¢/kg cwt	534.25	513.00	342

National saleyard indicators	Live weight	Muscle/Fat	Unit	TW	LW	LY
Trade steer	330-400kg	C3	¢/kg lwt	303	303	201
			¢/kg cwt	560	559	374
Medium steer	400-500kg	C3	¢/kg lwt	264	253	181
			¢/kg cwt	484	463	335
Heavy steer	500-600kg	C4	¢/kg lwt	278	282	196
			¢/kg cwt	509	519	360
Medium cow	400-520kg	D3	¢/kg lwt	209	196	120
			¢/kg cwt	432	403	251
Feeder steer	330-400kg	C2	¢/kg lwt	302	287	187

Eastern states OTH indicators	Carcase weight	Muscle	Unit	TW	LW	LY
Trade steer	240-260kg	A-C	¢/kg cwt	464	455	324
Medium steer	260-280kg	A-C	¢/kg cwt	452	445	333
Heavy steer	300-400kg	A-C	¢/kg cwt	459	453	339
Medium cow	260-280kg	A-E	¢/kg cwt	392	384	272
MSA Trade steer	240-260kg	A-C	¢/kg cwt	494	490	377

Feeder cattle indicators - paddock sales						
for week of		25/06/2015	Unit	TW	LW	LY
<b>Domestic</b>			Unit			
Steers 280-350kg			¢/kg lwt	271	272	193
Heifers 280-350kg			¢/kg lwt	253	254	175
<b>Export</b>			Unit			
Shortfed 100-120 DOF			¢/kg lwt	290	289	185
Mediumfed 120-220 DOF			¢/kg lwt	294	294	205
Longfed 220+ DOF			¢/kg lwt	311	308	217

State saleyard indicators				Queensland			NSW			Victoria			SA			Tasmania		
Category	Live weight	Muscle/Fat	Unit	TW	LW	LY	TW	LW	LY	TW	LW	LY	TW	LW	LY	TW	LW	LY
Trade steer	330-400kg	C3	¢/kg lwt	287	268	186	309	307	202	301	304	193	300	301	191	247	228	168
			¢/kg cwt	522	488	340	573	580	377	557	555	361	546	547	349	441	416	322
Medium steer	400-500kg	C3	¢/kg lwt	245	234	163	285	287	182	295	285	199	292	285	196	nq	nq	nq
			¢/kg cwt	446	425	296	531	536	342	547	537	365	532	518	370	nq	nq	nq
Heavy steer	500-600kg	C4	¢/kg lwt	244	245	166	297	292	201	312	303	194	nq	nq	nq	240	nq	nq
			¢/kg cwt	442	440	296	545	539	370	579	560	357	nq	nq	nq	429	nq	nq
Medium cow	400-520kg	D3	¢/kg lwt	201	189	114	208	197	122	223	221	134	218	208	130	192	170	nq
			¢/kg cwt	407	383	232	435	413	260	464	456	279	436	416	260	402	366	nq
Feeder steer	330-400kg	C2	¢/kg lwt	283	264	179	311	301	191	276	287	187	294	291	185	nq	nq	nq

State over-the-hooks indicators				Queensland			NSW			Victoria			SA			Tasmania		
Category	Carcase weight	Muscle	Unit	TW	LW	LY	TW	LW	LY	TW	LW	LY	TW	LW	LY	TW	LW	LY
Trade steer	240-260kg	A-C	¢/kg cwt	435	431	328	459	450	336	498	483	320	nq	nq	310	nq	nq	nq
Medium steer	260-280kg	A-C	¢/kg cwt	425	421	298	462	453	322	479	467	340	nq	nq	nq	440	440	370
Heavy steer	300-400kg	A-C	¢/kg cwt	438	434	305	471	462	330	488	475	350	nq	nq	nq	440	440	370
Medium cow	260-280kg	A-E	¢/kg cwt	388	384	275	394	386	257	403	385	278	417	406	270	360	360	280
EU steer	240-330kg	A-C	¢/kg cwt	523	518	nq	480	480	375	nq	nq	nq	nq	nq	nq	nq	nq	nq
MSA Trade steer	240-260kg	A-C	¢/kg cwt	484	479	388	499	488	357	nq	nq	nq	512	512	nq	480	480	385

WA saleyard indicators	Unit	TW	LW	LY
Pastoral cow	¢/kg lwt	185	154	124
Heavy cow	¢/kg lwt	210	206	155
Heavy yearling	¢/kg lwt	298	297	247
Feeder yearling	¢/kg lwt	293	310	205

WA over-the-hooks indicators	Unit	TW	LW	LY
Grassfed yearling	¢/kg cwt	540	530	nq
Grainfed yearling	¢/kg cwt	535	523	450
MSA yearling	¢/kg cwt	535	523	450
Medium cow	¢/kg cwt	nq	nq	218

Live Export Price Quotes	for week of	25/06/2015	Unit	TW	LW	LY
Light Steer	260 - 360 kg	Townsville	¢/kg lwt	nq	nq	nq
	260 - 360 kg	Darwin	¢/kg lwt	255	255	185
	260 - 360 kg	Broome	¢/kg lwt	260	260	200
Light Heifer	260 - 360 kg	Townsville	¢/kg lwt	nq	nq	nq
	260 - 360 kg	Darwin	¢/kg lwt	230	230	160
	260 - 360 kg	Broome	¢/kg lwt	nq	nq	180

TW = This week, LW = Last week, LY = Last year

### Eastern Young Cattle Indicator (EYCI)

The Eastern Young Cattle Indicator, or EYCI, is a seven-day rolling average of 24 young cattle categories from 24 saleyards across Queensland, New South Wales and Victoria. It is expressed in cents per kilogram carcass (or dressed) weight (¢/kg cwt) and is rounded to the nearest ¼ cent.

The EYCI is designed to be applicable to a wide range of cattle and beef industry participants, and has sufficient diversity (both geographic and cattle type) to prevent manipulation by activity in the physical cattle market.

The young cattle market was chosen as the base for the EYCI as it is the largest, most transparent of the physical cattle markets and attracts the widest range of industry participants.

### What is a seven-day rolling average?

At any point in time, a seven-day rolling average includes data from the past seven days. In the case of the EYCI, this refers to seven calendar days, or one week.

The EYCI includes vealer and yearling heifers and steers, grade score C2 or C3, with liveweight from 200kg (See table below). The EYCI currently includes cattle purchased for restocking, lot feeding and slaughter from the relevant prime sales.

Individual states were integrated into the EYCI at the commencement of NLRS reporting in that state:

NSW – August 1996

Victoria – May 1997

Queensland – October 1999

### Cattle categories in the EYCI

Classification	Muscle/fat	Liveweight (kg)
Vealer steers	C2 & C3	200.1-280
		280.1-330
Vealer heifers	C2 & C3	200.1-280
		280.1-330
Yearling steers	C2 & C3	200.1-330
		330.1-400
Yearling heifers	C2 & C3	200.1-330
		330.1-400

### Category specifications

The following tables show the grades that are used for the Meat & Livestock Weekly Statistics.

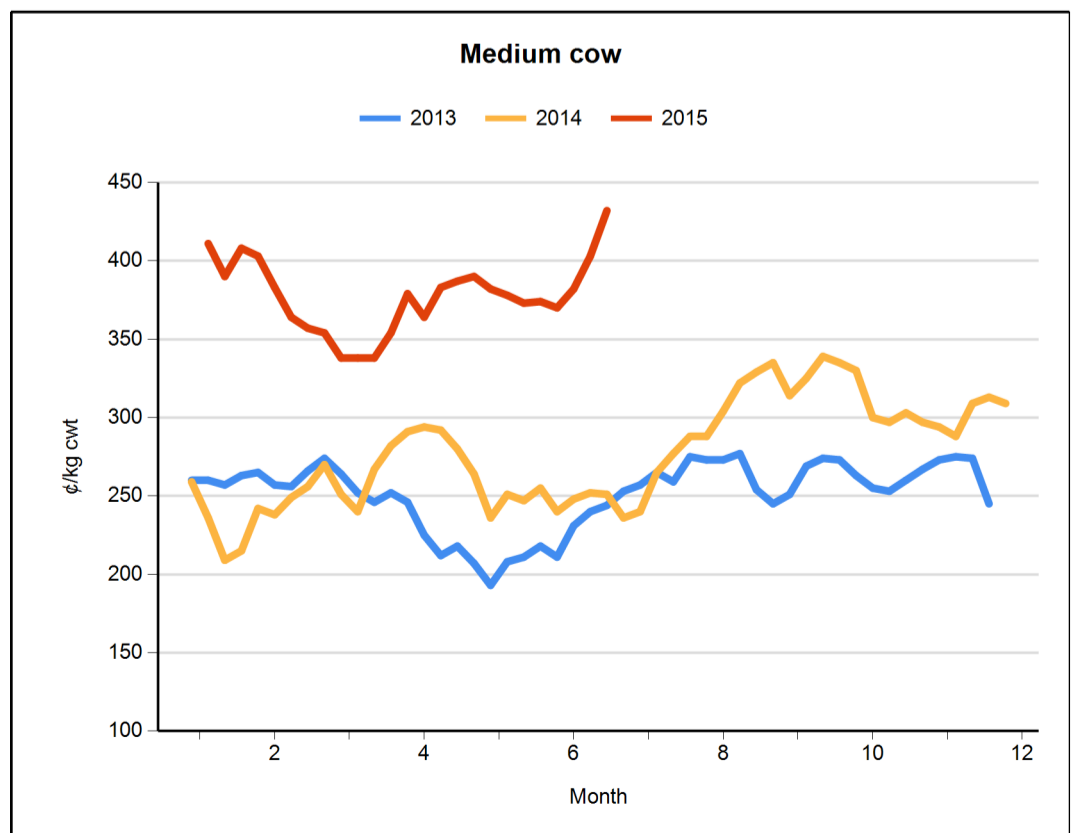
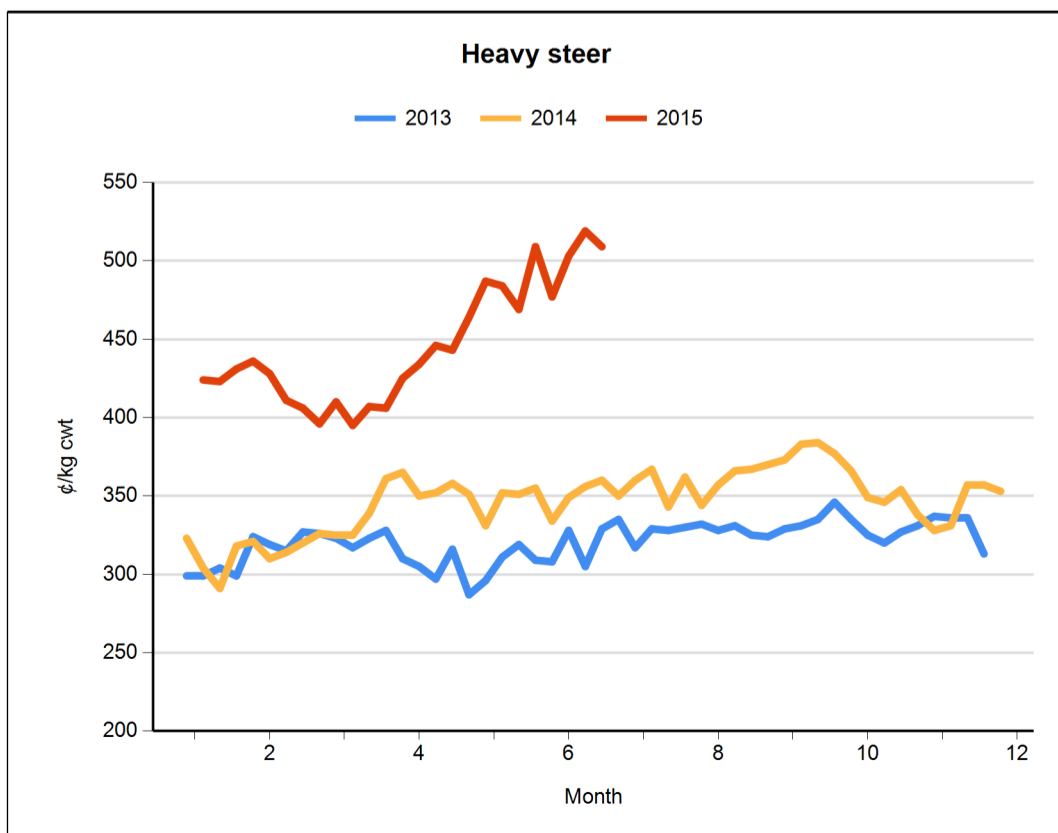
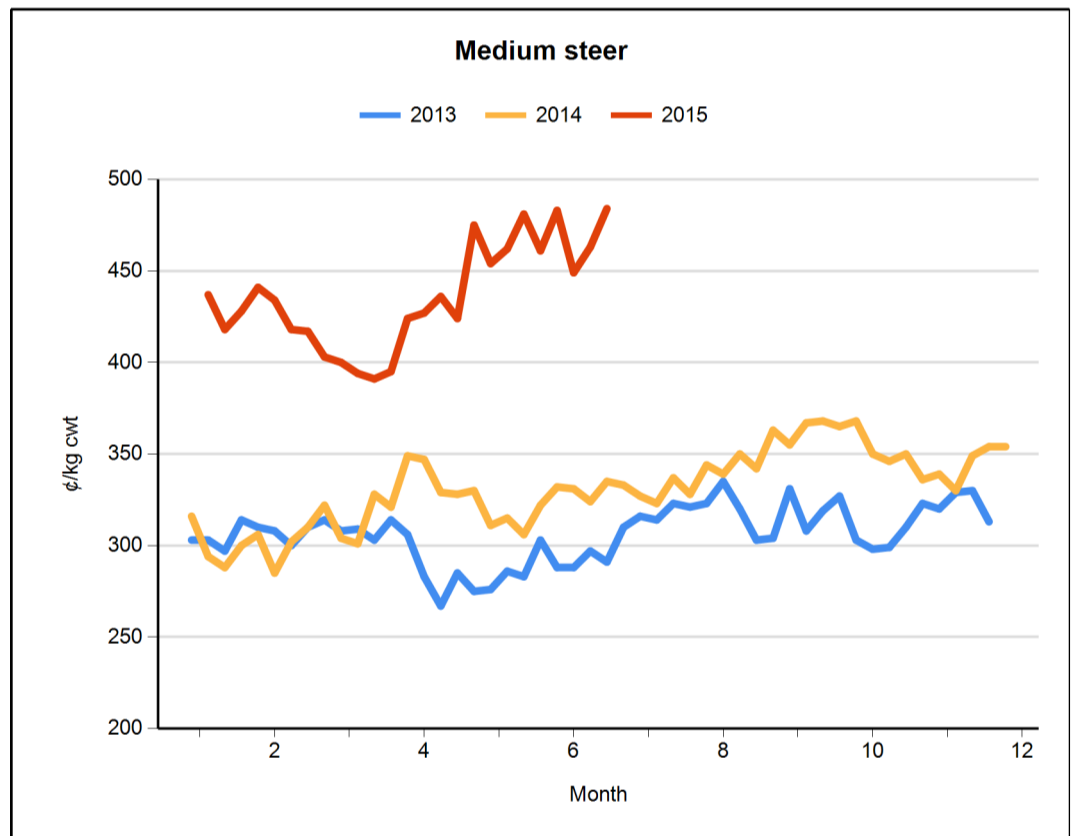
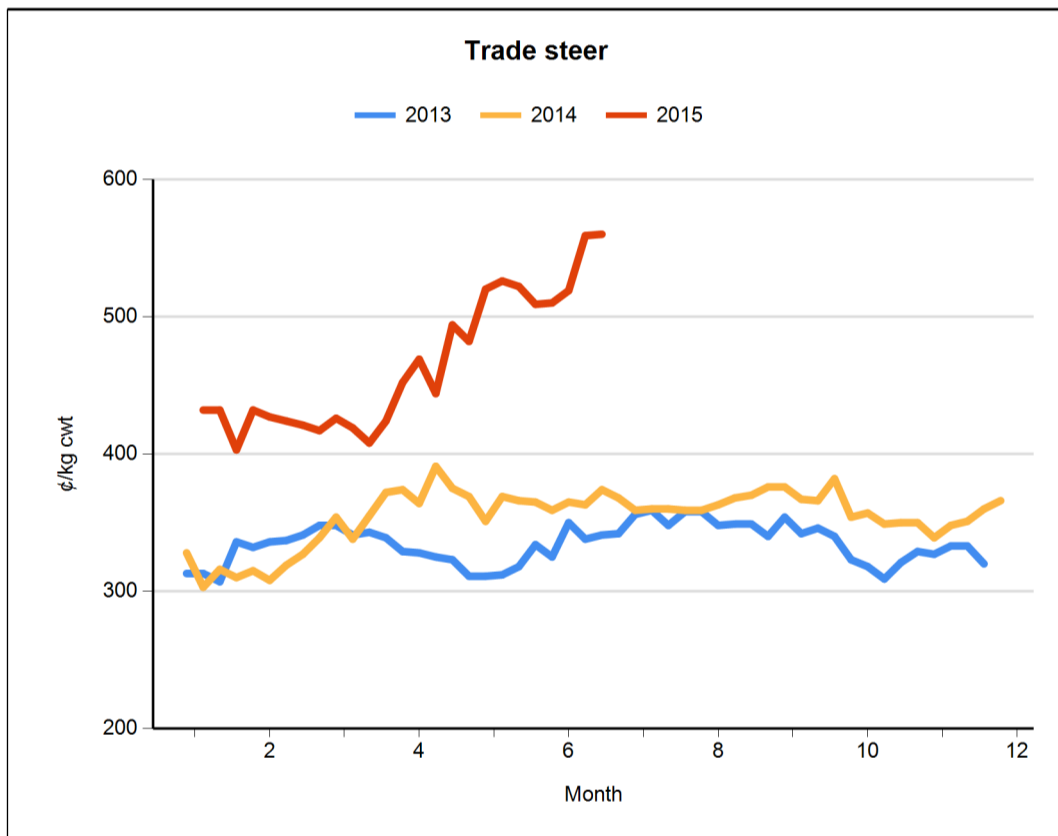
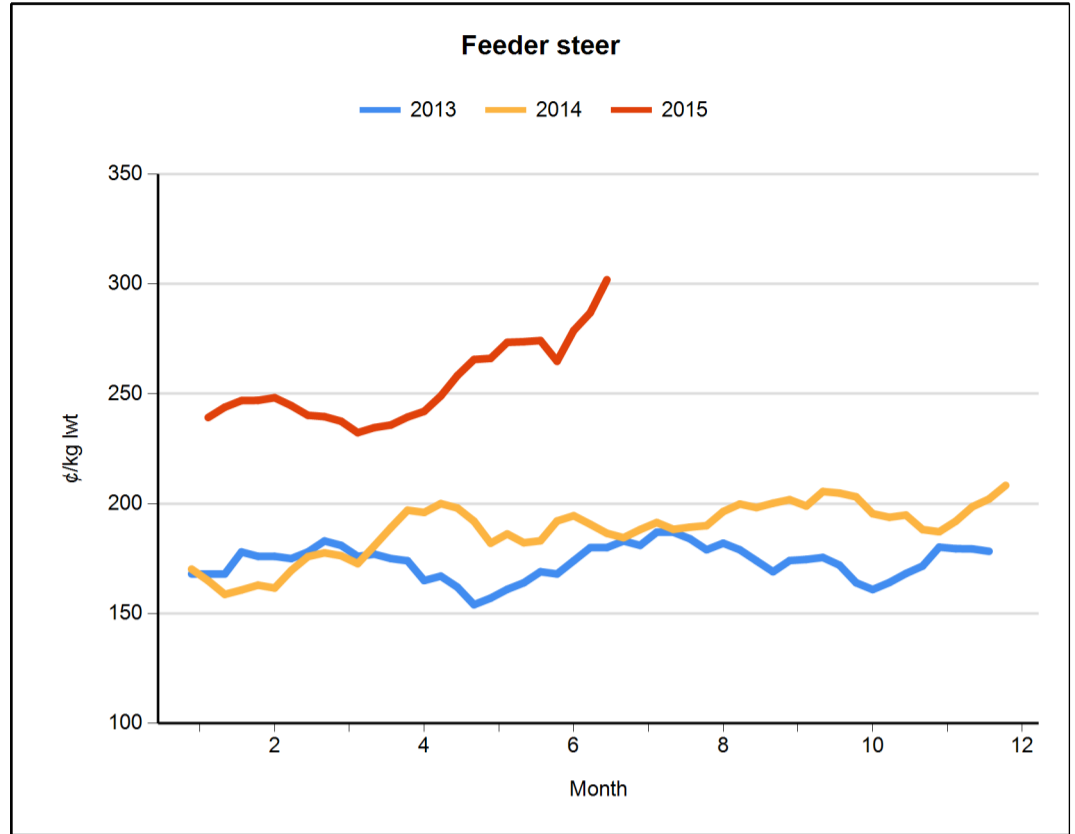
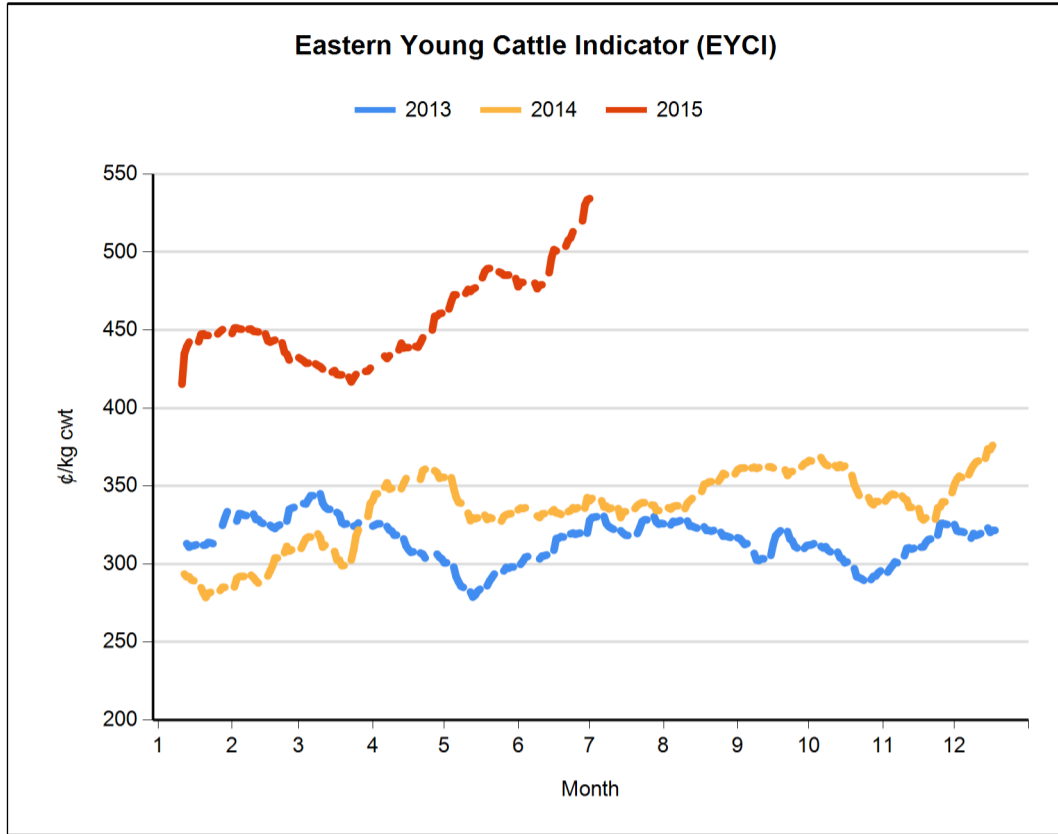
#### Cattle indicator weights

Stock type	Weight	Muscle/fat
Trade steer	330-400kg	C3
Medium steer	400-500kg	C3
Heavy steer	500-600kg	C4
Medium cow	400-520kg	D3
Feeder steer*	330-400kg	C2

\*Yearling steer, purchased by lotfeeders

#### Cattle OTH indicator weights

Stock type	Weight	Muscle/fat
EU steer	240-440kg	A-C 6-22mm
Trade steer	220-280kg	A-C 3-12mm
Medium steer	260-300kg	A-C 7-22mm
Heavy steer	300-420kg	A-C 7-22mm
Medium cow	240-280kg	A-E 3-22mm





Eastern States Trade Lamb Indicator (¢/kg cwt)	2 Jul 2015	25 Jun 2015	3 Jul 2014
ESTLI	597	598	573

National saleyard sheep and lamb indicators (¢/kg cwt)		TW	LW	LY
Restocker/feeder lamb (\$/head)	0-18kg	80	80	80
Merino lamb	16-22kg	536	553	533
Light lamb	12-18kg	559	565	540
Trade lamb	18-22kg	588	594	574
Heavy lamb	22+kg	603	598	588
Mutton	18-24kg	395	394	372

National OTH sheep and lamb indicators (¢/kg cwt)		TW	LW	LY
Medium trade lamb	18-20kg	579	568	591
Heavy trade lamb	20-22kg	582	571	591
Heavy lamb	22-24kg	576	569	587
Mutton	18-24kg	347	345	335

#### Category specifications

The following tables show the grades that are used for the Meat & Livestock Weekly Statistics.

TW = This week, LW = Last week, LY = Last year

#### Sheep and lamb indicator weights

Stock type	Weight	Fat score
Restocker/feeder lamb	0-18kg	1-2
Merino lamb	16-22kg	2-3
Light lamb*	12-18kg	2-3
Trade lamb#	18-22kg	2-4
Heavy lamb#	22kg +	2-4
Mutton	18-24kg	2-3

#### Sheep and lamb OTH indicator weights

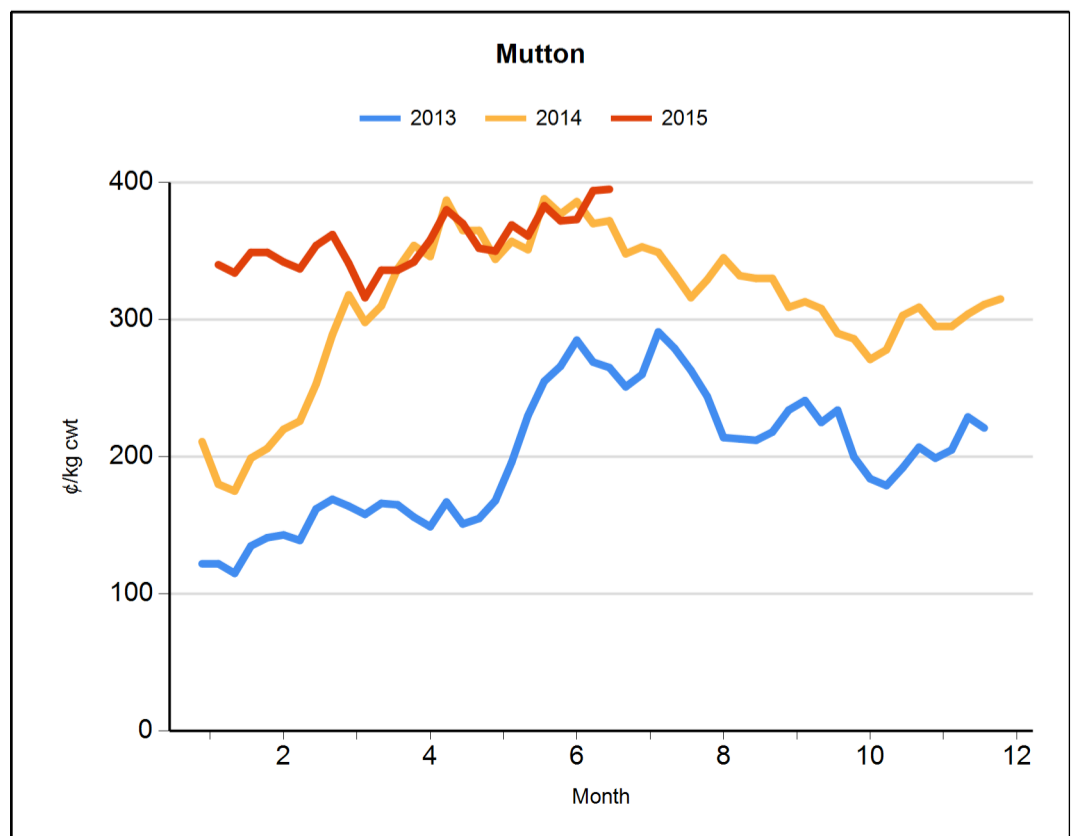
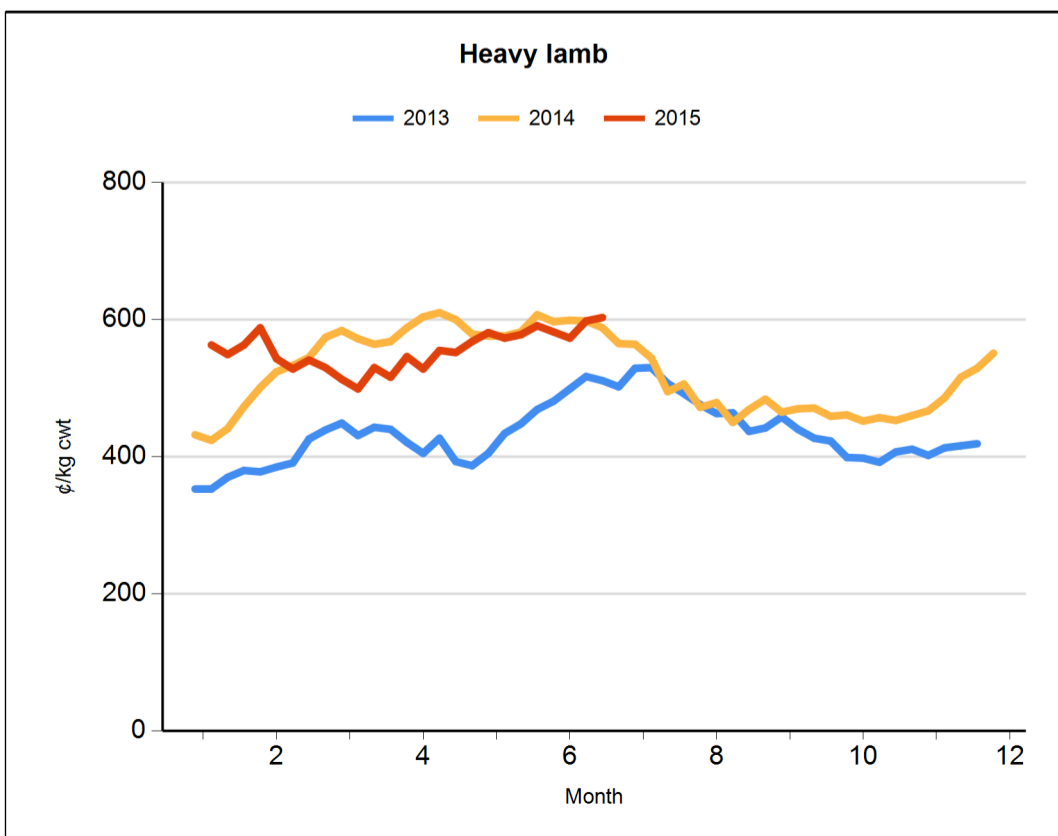
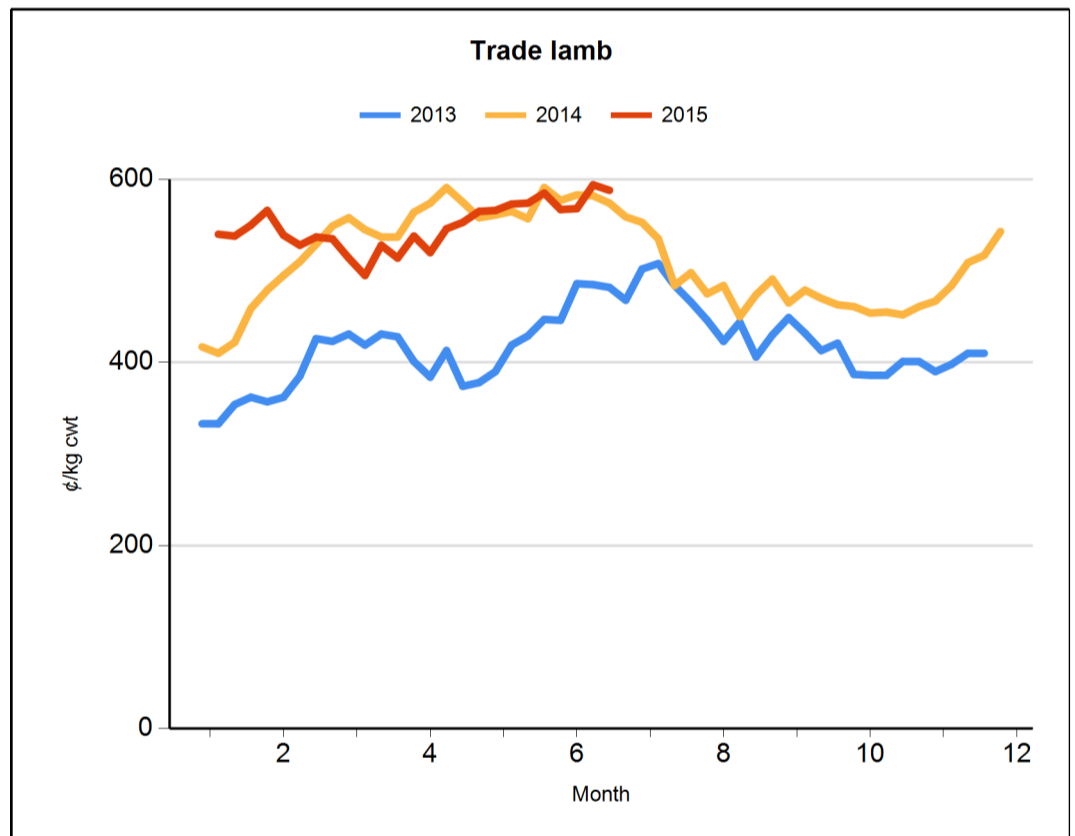
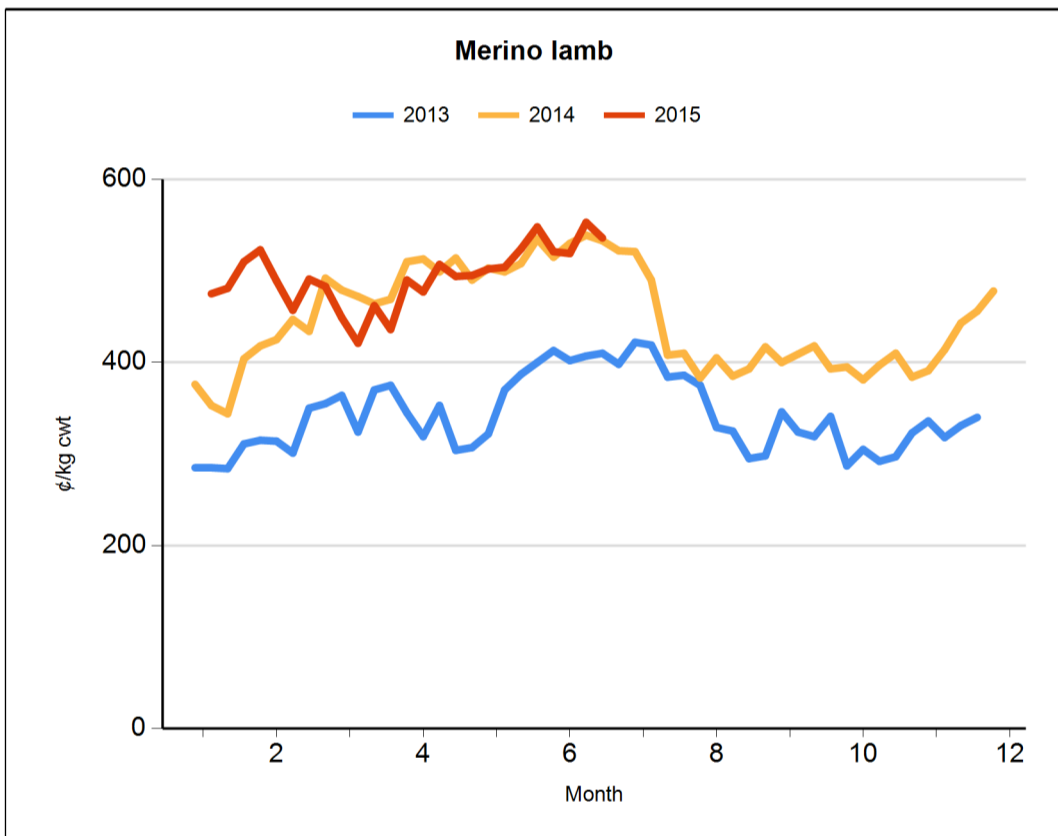
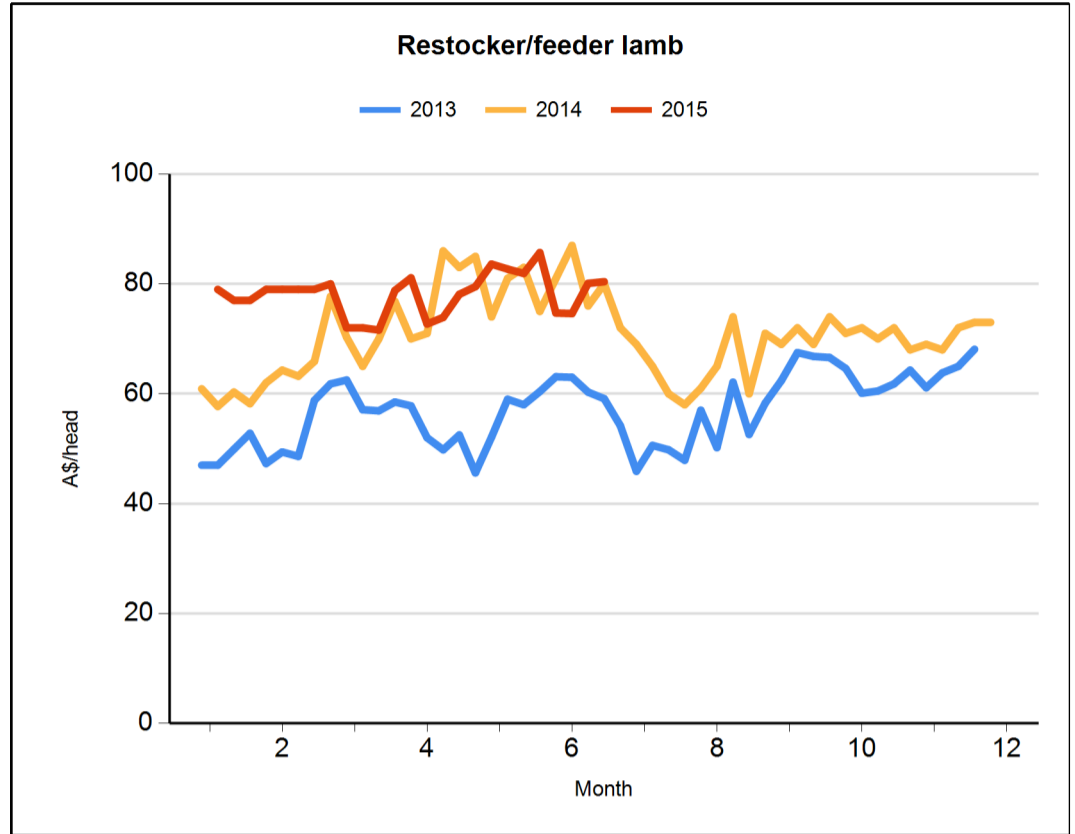
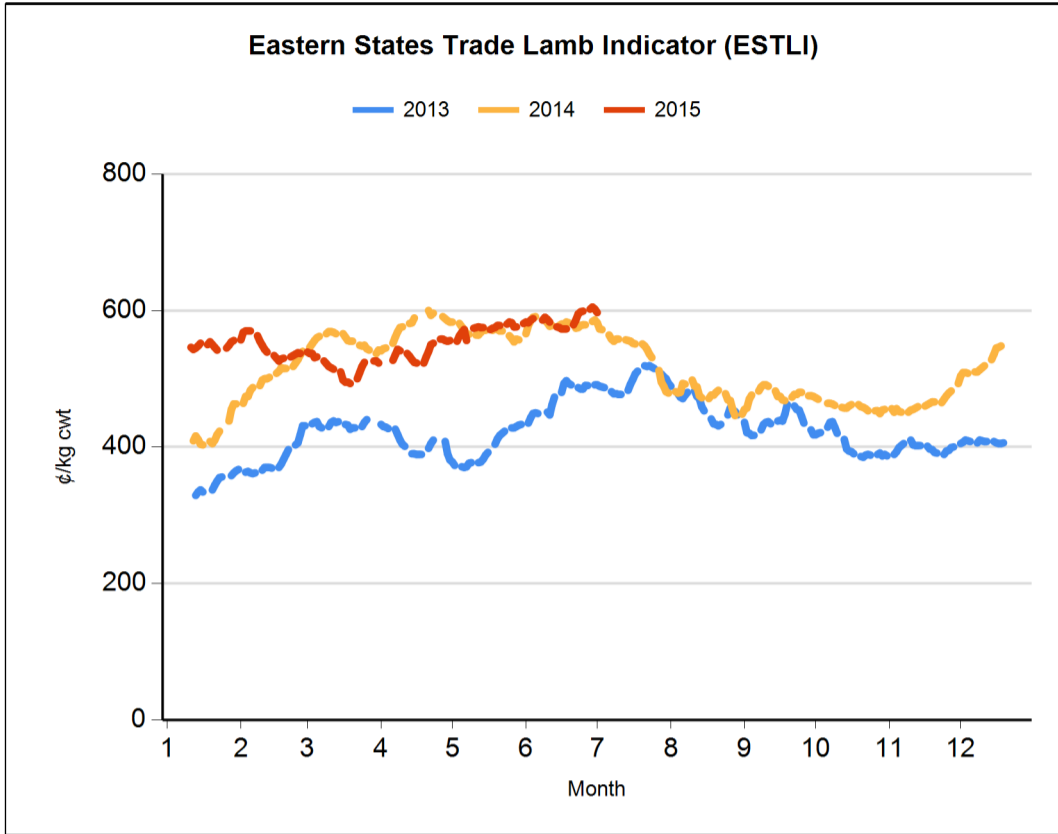
Stock type	Weight	Fat score
Medium trade lamb	18-20kg	2-4
Heavy trade lamb	20-22kg	2-4
Heavy lamb	22kg+	2-4
Mutton	18-24kg	2-4

\*1<sup>st</sup> & 2<sup>nd</sup> cross & Merino, #1<sup>st</sup> & 2<sup>nd</sup> cross

State saleyard sheep and lamb indicators (¢/kg cwt)		Victoria			NSW			SA			WA			Tasmania		
		TW	LW	LY	TW	LW	LY	TW	LW	LY	TW	LW	LY	TW	LW	LY
Restocker lamb (\$/head)	0-18kg	76	70	78	86	97	65	75	64	51	74	59	83	nq	nq	82
Merino lamb	16-22kg	566	585	524	549	561	525	486	505	502	472	473	589	nq	nq	nq
Light lamb	12-18kg	590	592	570	564	575	525	504	516	506	480	447	575	604	532	476
Trade lamb	18-22kg	614	615	586	596	597	568	544	546	581	485	497	588	595	585	523
Heavy lamb	22+kg	631	608	604	605	598	583	550	576	580	487	529	617	575	560	526
Mutton	18-24kg	411	415	383	396	403	377	368	375	371	239	259	329	399	354	311

Over-the-hooks sheep and lamb indicators (¢/kg cwt)		Victoria			NSW			SA			WA			Tasmania		
		TW	LW	LY	TW	LW	LY	TW	LW	LY	TW	LW	LY	TW	LW	LY
Medium trade lamb	18-20kg	605	603	608	560	546	587	593	590	600	587	580	593	550	520	565
Heavy trade lamb	20-22kg	605	603	608	576	564	587	593	590	600	587	580	593	550	520	565
Heavy lamb	22-24kg	607	603	604	571	563	583	593	590	600	560	560	583	550	530	565
Mutton	18-24kg	360	360	346	379	361	336	360	380	335	285	285	303	350	340	355

Live export price quotes (A\$/head)		TW	LW	LY
Live wether	Muchea	94	nq	108

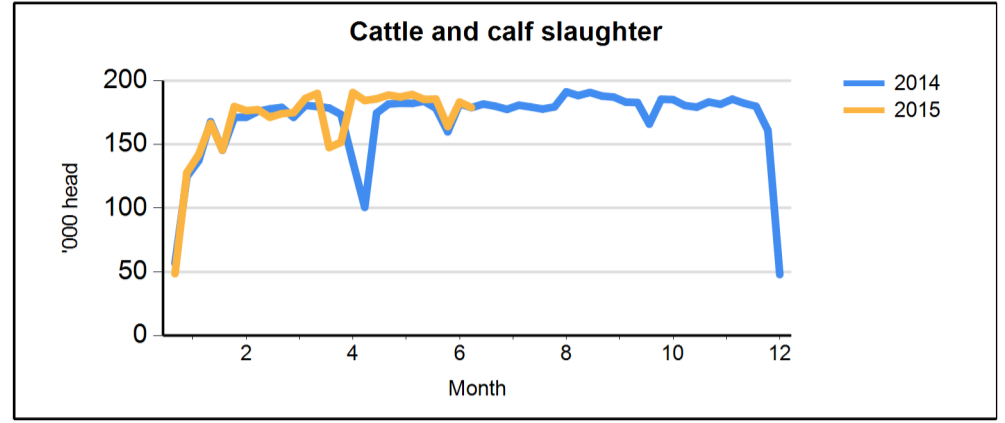




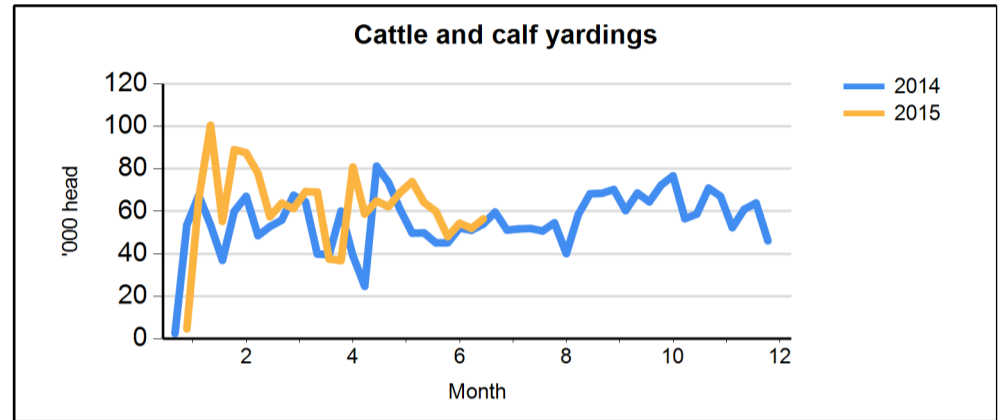


#### Cattle movements

Cattle slaughter		for w/e	26/06/2015	TW	LW	LY
Queensland	Cattle		87,703	90,014	84,410	
	Calves		323	464	545	
NSW	Cattle		40,952	40,993	39,704	
	Calves		3,007	3,330	4,413	
Victoria	Cattle		27,044	28,632	31,305	
	Calves		5,977	6,141	5,855	
SA	Cattle		8,935	8,568	7,731	
	Calves		60	34	29	
Tasmania	Cattle		4,930	4,993	4,835	
	Calves		64	126	89	

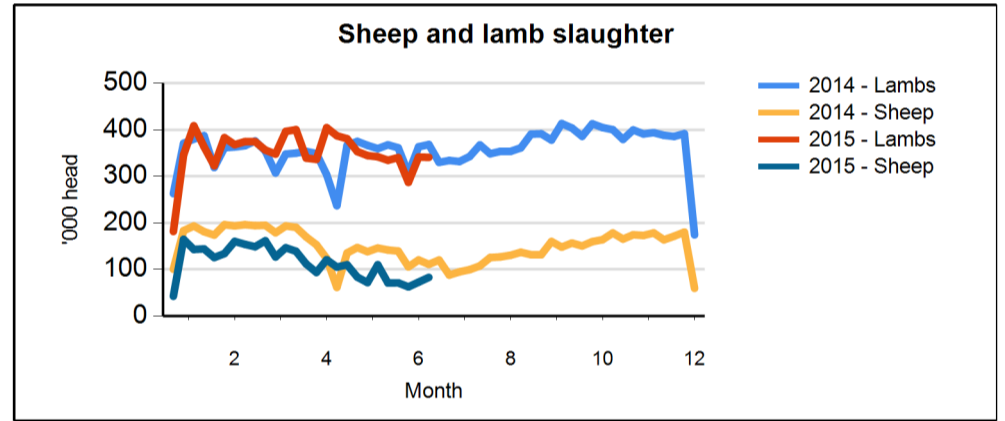


Cattle saleyard throughput		for w/e	2/07/2015	TW	LW	LY
Queensland	Cattle		17,373	18,659	19,189	
NSW	Cattle		21,686	18,187	19,330	
Victoria	Cattle		11,950	9,998	10,583	
SA	Cattle		3,134	2,288	2,538	
WA	Cattle		2,116	2,495	2,310	
Tasmania	Cattle		190	337	60	

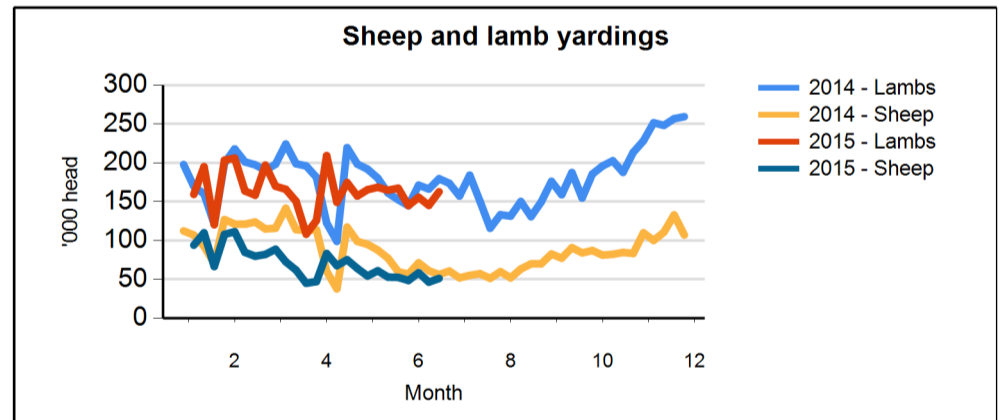


#### Sheep and lamb movements

Sheep and lamb slaughter		for w/e	26/06/2015	TW	LW	LY
Victoria	Lambs		171,771	174,193	181,960	
	Sheep		31,605	28,742	35,790	
NSW	Lambs		93,876	91,889	98,120	
	Sheep		23,048	28,916	44,441	
SA	Lambs		56,549	59,255	66,570	
	Sheep		15,355	12,668	13,852	
Queensland	Lambs		2,330	74	5,974	
	Sheep		10,601	40	11,991	
Tasmania	Lambs		16,072	15,948	15,539	
	Sheep		2,347	2,392	4,861	

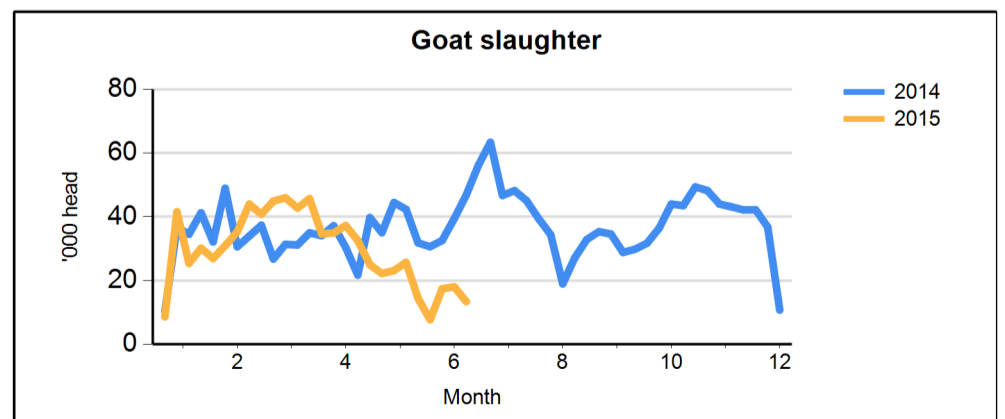


Sheep and lamb saleyard throughput		for w/e	2/07/2015	TW	LW	LY
Victoria	Lambs		27,909	33,314	32,342	
	Sheep		12,491	12,380	11,297	
NSW	Lambs		109,307	93,559	111,670	
	Sheep		30,448	25,979	29,440	
SA	Lambs		14,636	10,086	11,244	
	Sheep		2,592	2,377	3,218	
WA	Lambs		10,113	6,744	23,100	
	Sheep		4,926	5,041	11,709	
Tasmania	Lambs		870	1,600	1,250	
	Sheep		750	650	500	



#### Goat movements

Goat slaughter		for w/e	26/06/2015	TW	LW	LY
Queensland	Goats		6,461	9,777	15,401	
NSW	Goats		1,228	1,657	2,718	
Victoria	Goats		2,900	6,285	20,599	
SA	Goats		2,785	310	8,186	
Tasmania	Goats		2	nq	nq	





Over-the-hooks goat indicators (A¢/kg cwt)	TW	LF	LY
8.1-10kg	438	432	311
10.1-12kg	438	429	313
12.1-16kg	438	429	313
16.1-20kg	438	429	313
20.1kg+	438	429	313

Skin indicators - Lambs		TW	LW	LY
2" +	16.1 - 20kg	400	400	250
	20.1 - 24kg	688	688	475
	24.1kg +	838	838	625
1" - 2"	16.1 - 20kg	388	388	213
	20.1 - 24kg	550	550	375
	24.1kg +	700	700	475
0.5" - 1"	16.1 - 20kg	100	100	250
	20.1 - 24kg	338	338	263
	24.1kg +	413	413	300
New Season	16.1 - 20kg	250	250	400
	20.1 - 24kg	500	500	600
	24.1kg +	625	625	700

Skin indicators - Merino sheep (average 25 micron)		TW	LW	LY
1.5" - 2"	16.1 - 20kg	700	700	400
	20.1 - 24kg	1050	1050	625
	24.1kg +	1150	1150	725

Eastern Market Wool Indicator (A¢/kg)		TW	LW	LY
AWEX E.M.I		1241	1271	1017
Source: Australian Wool Exchange Ltd				

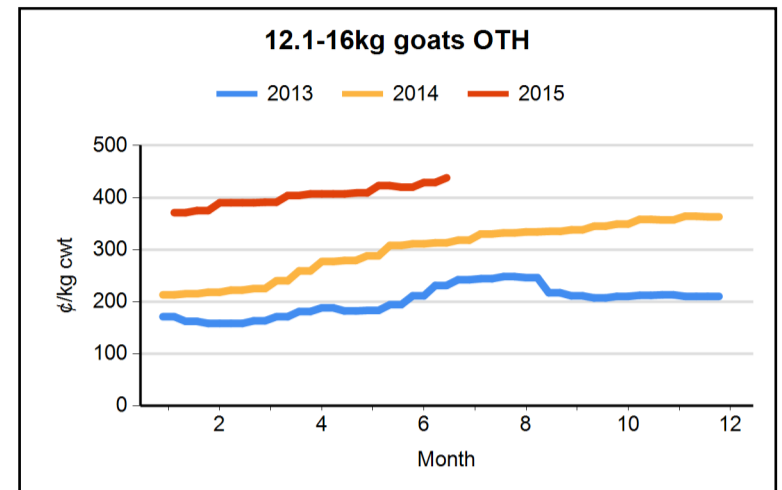
Fodder prices (A\$/tonne)	Cereal			Lucerne			Straw			Pasture		
	TW	LW	LY	TW	LW	LY	TW	LW	LY	TW	LW	LY
Darling Downs	365	365	375	475	475	325	180	180	225	290	290	170
Central West NSW	260	260	290	370	370	345	nq	nq	130	nq	nq	250
Goulburn Valley	225	225	200	330	315	300	100	100	100	165	165	175
South East SA	250	245	140	225	320	280	120	120	110	200	200	140
South West WA	210	200	180	510	510	525	100	100	100	180	180	nq
Source: Dairy Australia												

Tallow (A\$/tonne, delivered in store)	TW	LW	LY
Prime - Melbourne	710	nq	nq
Prime - Brisbane	710	nq	nq
Bleachable fancy	670	nq	nq
Source: Trade			

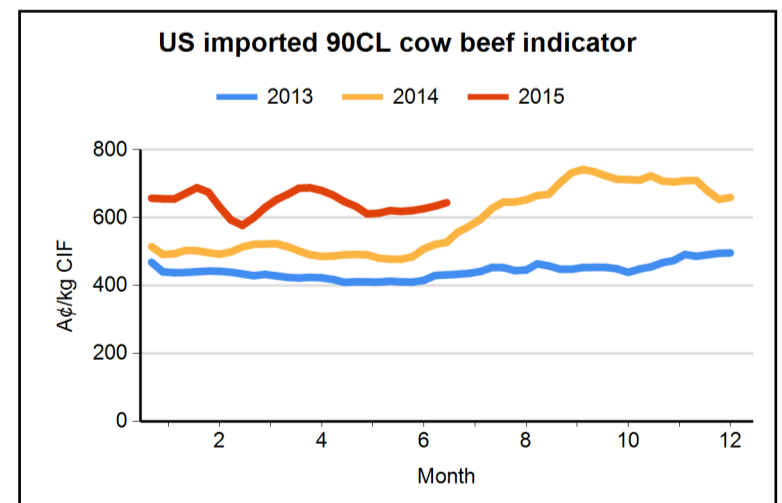
Grain prices - Darling Downs (A\$/tonne)	TW	LW	LY
Wheat	355	342	340
Barley	338	331	330
Sorghum	322	319	284

Grain prices - Riverina (A\$/tonne)	TW	LW	LY
Wheat	288	280	257
Barley	275	269	250
Source: Profarmer Australia			

US imported beef prices (CIF)		TW	LW	LY
Bull 95CL	US¢/lb	242.3	240.8	235.5
	A¢/kg	696.9	687.9	552.0
Cow 90CL	US¢/lb	224.0	222.0	225.0
	A¢/kg	644.4	634.3	527.3
CC/CF 85CL	US¢/lb	198.0	201.5	211.5
	A¢/kg	569.6	575.8	495.7
Shank 90CL	US¢/lb	223.0	221.0	221.5
	A¢/kg	641.5	631.5	519.1
Trim 85CL	US¢/lb	197.0	200.5	210.0
	A¢/kg	566.7	572.9	492.2
Trim 80CL	US¢/lb	164.5	166.0	193.5
	A¢/kg	473.2	474.3	453.5
Trim 75CL	US¢/lb	146.0	nq	167.5
	A¢/kg	420.0	nq	392.6
Trim 65CL	US¢/lb	116.0	120.0	141.0
	A¢/kg	333.7	342.9	330.5
Outside flats	US¢/lb	285.0	285.0	nq
	A¢/kg	819.8	814.4	nq
Knuckles	US¢/lb	292.5	292.5	252.5
	A¢/kg	841.4	835.8	591.8
Inside cap off	US¢/lb	322.5	322.5	297.5
	A¢/kg	927.7	921.5	697.3
Source: Steiner Consulting Group				



PLEASE NOTE  
US imported beef prices are now reported only in CIF terms.  
They are no longer converted to FAS terms.





<b>Exchange rates</b>	<b>2015</b>	<b>2015</b>	<b>2014</b>
1 AUD buys:	<b>June</b>	<b>May</b>	<b>June</b>
US dollar (USD)	<b>0.771</b>	0.788	0.937
Japanese yen (JPY)	<b>95.426</b>	95.178	95.607
Korean won (KRW)	<b>858.622</b>	860.976	954.829
UK pound (GBP)	<b>0.495</b>	0.510	0.554
Euro (EUR)	<b>0.687</b>	0.706	0.689
NZ dollar (NZD)	<b>1.104</b>	1.066	1.086
Indonesia rupiah (IDR)	<b>10258.013</b>	10328.582	11136.104
Source: XE.com			

## UNITED STATES

<b>US imported beef prices (CIF)</b>		<b>2015</b>	<b>2015</b>	<b>2014</b>
		<b>June</b>	<b>May</b>	<b>June</b>
Bull 95CL	US¢/lb	<b>236.9</b>	241.9	225.0
	A¢/kg	<b>669.8</b>	687.9	543.1
Cow 90CL	US¢/lb	<b>218.8</b>	221.6	211.8
	A¢/kg	<b>621.1</b>	633.5	521.4
CC/CF 85CL	US¢/lb	<b>194.8</b>	198.8	200.3
	A¢/kg	<b>548.1</b>	574.9	480.3
Shank 90CL	US¢/lb	<b>216.6</b>	221.6	208.1
	A¢/kg	<b>612.5</b>	634.9	506.2
Trim 85CL	US¢/lb	<b>193.8</b>	197.1	199.3
	A¢/kg	<b>546.7</b>	570.7	478.0
Trim 80CL	US¢/lb	<b>162.5</b>	168.9	184.1
	A¢/kg	<b>468.0</b>	489.8	440.4
Trim 75CL	US¢/lb	<b>nq</b>	158.8	168.3
	A¢/kg	<b>nq</b>	447.9	0.0
Trim 65CL	US¢/lb	<b>126.4</b>	136.1	137.8
	A¢/kg	<b>374.9</b>	392.1	324.1
Outside flats	US¢/lb	<b>283.1</b>	279.4	227.5
	A¢/kg	<b>808.6</b>	774.4	0.0
Knuckles	US¢/lb	<b>290.0</b>	291.3	255.0
	A¢/kg	<b>837.2</b>	802.4	593.0
Inside cap off	US¢/lb	<b>317.5</b>	312.3	295.0
	A¢/kg	<b>908.7</b>	886.1	698.7
Source: Steiner Consulting Group				

<b>US cattle indicators</b>	<b>2015</b>	<b>2015</b>	<b>2014</b>
US¢/lb lwt	<b>June</b>	<b>May</b>	<b>June</b>
Breaker 75% lean	<b>194.9</b>	200.6	173.3
CME feeder cattle	<b>225.7</b>	219.3	200.7
5 market fed steer	<b>154.7</b>	161.1	147.3
Cutter 90% lean	<b>201.8</b>	202.9	185.4
Boner 85% lean	<b>195.6</b>	203.1	179.3
Source: Steiner Consulting Group			



<b>US domestic wholesale beef prices</b>	<b>2015</b>	<b>2015</b>	<b>2014</b>
US¢/lb	<b>June</b>	<b>May</b>	<b>June</b>
90CL	<b>293.1</b>	297.4	252.8
85CL	<b>267.3</b>	270.9	224.4
75CL	<b>207.7</b>	218.0	187.8
50CL	<b>83.2</b>	95.3	127.9
2pc b/less chuck	<b>291.3</b>	297.5	272.4
insides	<b>320.6</b>	325.0	327.5
outsides	<b>286.1</b>	262.8	240.5
knuckles	<b>311.3</b>	320.0	265.0
Choice beef cutout	<b>248.1</b>	259.0	233.8

Source: Urner Barry's Yellow Sheet

<b>US cattle futures</b>	<b>THIS</b>	<b>LAST</b>	<b>LAST</b>
US¢/lb lwt	<b>WEEK</b>	<b>WEEK</b>	<b>FORTNIGHT</b>
<b>Live cattle</b>			
Feb-16	<b>154.700</b>	154.100	153.850
Apr-16	<b>153.700</b>	153.175	152.650
Jun-16	<b>145.600</b>	150.675	151.950
Aug-15	<b>151.075</b>	150.325	150.650
Oct-15	<b>153.700</b>	153.000	152.950
Dec-15	<b>154.750</b>	154.075	153.975
<b>Feeder cattle</b>			
Jan-16	<b>207.850</b>	211.425	210.800
Mar-16	<b>205.550</b>	209.050	207.475
Apr-16	<b>206.425</b>	209.500	207.750
May-16	<b>205.350</b>	208.000	207.000
Aug-15	<b>218.500</b>	223.550	224.725
Sep-15	<b>217.050</b>	221.775	222.450
Oct-15	<b>215.550</b>	219.825	220.300
Nov-15	<b>214.225</b>	218.200	218.475

Source: CME

<b>US livestock slaughter ('000 head)</b>	<b>2015</b>	<b>2015</b>	<b>2014</b>
	<b>June</b>	<b>May</b>	<b>June</b>
Cattle (weekly average)	<b>547</b>	559	612
Cattle (total year-to-date)	<b>12958</b>	11863	15085
Cows (weekly average)	<b>94</b>	94	98
Cows (total year-to-date)	<b>2426</b>	2239	2781
Sheep and lambs (weekly average)	<b>39</b>	37	41
Sheep and lambs (total year-to-date)	<b>925</b>	847	1063

Source: USDA

Last available US slaughter data are for 13 June 2015

<b>US wholesale lamb prices</b>	<b>2015</b>	<b>2015</b>	<b>2014</b>
US¢/lb	<b>June</b>	<b>May</b>	<b>June</b>
HRI leg	<b>473</b>	486	501
HRI rack	<b>960</b>	983	1010

Source: Urner Barry HRI Buyers' Guide

US lamb carcasses 55-65lb cwt	<b>346</b>	345	336
-------------------------------	------------	-----	-----

Source: USDA





## JAPAN

Beef export price indicators to Japan		2015	2015	2014
US¢/lb C&F, A¢/kg C&F		June	May	June
<b>Chilled</b>				
grassfed fullset	US¢/lb	284	293	273
	A¢/kg	811	819	641
<b>Frozen</b>				
CF 85CL	US¢/lb	180	198	197
	A¢/kg	513	552	462
brisket	US¢/lb	199	201	198
	A¢/kg	569	561	465
65CL	US¢/lb	126	136	135
	A¢/kg	359	379	317

Source: Trade

Imported beef prices in Kanto wholesale market		2015	2015	2014
¥/kg spot, US¢/lb spot		June	May	June
<b>From Australia chilled</b>				
grassfed fullset	¥/kg	1093	1105	1024
	US¢/lb	400	414	455
grassfed navel end brisket	¥/kg	835	835	790
	US¢/lb	306	313	351
grassfed chuck roll	¥/kg	1039	1040	889
	US¢/lb	381	389	395
shortfed navel end brisket	¥/kg	929	925	805
	US¢/lb	340	346	358
shortfed chuck roll	¥/kg	1174	1175	983
	US¢/lb	430	440	437
<b>From Australia frozen</b>				
brisket	¥/kg	855	865	680
	US¢/lb	313	324	302
cow meat (85CL)	¥/kg	772	810	660
	US¢/lb	283	303	293
<b>From US chilled</b>				
chuck rib	¥/kg	2199	2250	2000
	US¢/lb	805	842	889
short rib	¥/kg	3898	4100	3100
	US¢/lb	1427	1535	1378
steak ready	¥/kg	3548	3133	2750
	US¢/lb	1299	1172	1222
<b>From US frozen</b>				
chuck roll	¥/kg	nq	nq	nq
	US¢/lb	nq	nq	nq
short plate	¥/kg	720	757	850
	US¢/lb	264	283	378

Source: Chikusan Nippo



Imported offal prices from Kansai offal market		2015	2015	2014
¥/kg spot, US¢/lb spot		June	May	June
<b>From Australia frozen</b>				
tongue (Swiss cut)	¥/kg	1449	1517	1175
	US¢/lb	530	568	522
thick skirt	¥/kg	924	958	658
	US¢/lb	338	359	293
thin skirt	¥/kg	924	958	658
	US¢/lb	338	359	293
mountain chain tripe	¥/kg	1249	1317	1050
	US¢/lb	457	493	467
<b>From NZ frozen</b>				
tongue (Swiss cut)	¥/kg	1349	1400	1075
	US¢/lb	493	524	478
<b>From Mexico frozen</b>				
tongue (Swiss cut)	¥/kg	1349	1400	1175
	US¢/lb	493	524	522

Source: Shokuniku Sokuhu

## KOREA

Korean wholesale prices	2015	2015	2014
KRW/kg	June	May	June
<b>Korean domestic wholesale</b>			
Hanwoo carcase	15811	14943	14171
beef cattle carcase	9779	9910	7631
pig carcase	5691	5765	6247
<b>Australian wholesale</b>			
brisket deckle off	9925	9825	6425
rump	9200	8875	7925
chuck roll	11150	10050	7225
short rib	12000	12000	13500
<b>US wholesale</b>			
grainfed chuck roll	12375	11300	8000
grainfed short rib	14450	15125	15825
brisket deckle off	10575	10050	6575

Source: Korean trade, HKJM

## NEW ZEALAND

NZ livestock prices	2015	2015	2014
A¢/kg	June	May	June
<b>Cattle</b>			
Bulls	405	411	372
Cows	287	293	265
Steers	428	432	395
<b>Lambs</b>			
NZ chilled export leg to EU (FAS)	847	824	896
NZ lamb 17.5kg cwt	443	457	533

Source: NZX Agrifax



## URUGUAY

Uruguay cattle slaughter ('000 head)	2015 June	2015 May	2014 June
Weekly average	41	44	48
Total year-to-date	1090	967	1100
Source: <i>World Beef Report</i>			

## BRAZIL

Brazil livestock and meat prices	2015 June	2015 May	2014 June
Steer (Sao Paulo state) BRL/kg	4.88	4.93	4.02
Steer (Sao Paulo state) USD/kg	1.57	1.62	1.80
Calf (Mato Grosso state) BRL/kg	6.90	7.19	5.46
Calf (Mato Grosso state) USD/kg	2.22	2.36	2.44
Wholesale - Forequarter USD/kg	2.46	2.52	2.92
Wholesale - Hindquarter USD/kg	3.44	3.50	4.19

## CHINA

China wholesale meat price indicators RMB/kg	2015 June	2015 May	2014 June
beef	53.68	53.82	54.12
chicken carcass	14.33	14.48	14.58
pork	19.57	18.88	18.54
sheepmeat	49.14	49.40	55.60

## INDONESIA

Jakarta wet market beef prices rupiah/kg	2015 June	2015 May	2014 June
Feedlot beef blade	103,750	106,250	105,000
Feedlot beef chuck	113,500	114,500	113,000
Feedlot beef knuckle	121,750	118,500	115,000
Feedlot beef outside	89,250	91,000	92,000
Feedlot beef shank	97,250	99,750	105,000
Feedlot beef sirloin	174,000	173,000	173,000
Feedlot beef tenderloin	216,000	213,750	182,000
Local beef blade	103,750	106,250	105,000
Local beef chuck	113,500	114,500	113,000
Local beef knuckle	121,750	118,500	115,000
Local beef outside	nq	89,000	nq
Local beef shank	97,250	98,667	105,000
Local beef sirloin	174,000	173,000	173,000
Local beef tenderloin	216,000	213,750	182,000