



Eastern Young Cattle Indicator	Unit	22 Oct 2015	15 Oct 2015	23 Oct 2014
EYCI	¢/kg cwt	525.50	528.25	344

National saleyard indicators	Live weight	Muscle/Fat	Unit	TW	LW	LY
Trade steer	330-400kg	C3	¢/kg lwt	288	280	193
			¢/kg cwt	529	517	357
Medium steer	400-500kg	C3	¢/kg lwt	270	267	189
			¢/kg cwt	498	491	350
Heavy steer	500-600kg	C4	¢/kg lwt	281	273	191
			¢/kg cwt	514	499	349
Medium cow	400-520kg	D3	¢/kg lwt	192	201	144
			¢/kg cwt	395	417	300
Feeder steer	330-400kg	C2	¢/kg lwt	292	290	195

Eastern states OTH indicators	Carcase weight	Muscle	Unit	TW	LW	LY
Trade steer	240-260kg	A-C	¢/kg cwt	511	526	362
Medium steer	260-280kg	A-C	¢/kg cwt	520	531	361
Heavy steer	300-400kg	A-C	¢/kg cwt	527	537	369
Medium cow	260-280kg	A-E	¢/kg cwt	430	453	312
MSA Trade steer	240-260kg	A-C	¢/kg cwt	547	563	395

Feeder cattle indicators - paddock sales						
for week of		15/10/2015	Unit	TW	LW	LY
Domestic			Unit			
Steers 280-350kg			¢/kg lwt	316	314	204
Heifers 280-350kg			¢/kg lwt	293	296	189
Export			Unit			
Shortfed 100-120 DOF			¢/kg lwt	318	325	217
Mediumfed 120-220 DOF			¢/kg lwt	314	nq	221
Longfed 220+ DOF			¢/kg lwt	323	336	229

State saleyard indicators				Queensland			NSW			Victoria			SA			Tasmania		
Category	Live weight	Muscle/Fat	Unit	TW	LW	LY	TW	LW	LY	TW	LW	LY	TW	LW	LY	TW	LW	LY
Trade steer	330-400kg	C3	¢/kg lwt	292	287	196	284	279	193	292	285	192	285	272	186	281	290	189
			¢/kg cwt	532	525	357	525	517	360	540	527	355	519	494	339	511	537	351
Medium steer	400-500kg	C3	¢/kg lwt	271	262	200	273	263	181	274	278	182	265	267	nq	291	nq	nq
			¢/kg cwt	493	476	365	510	494	339	511	514	339	482	486	nq	526	nq	nq
Heavy steer	500-600kg	C4	¢/kg lwt	280	283	200	280	266	184	284	273	182	286	nq	177	nq	nq	nq
			¢/kg cwt	504	507	359	518	490	340	527	506	339	520	nq	328	nq	nq	nq
Medium cow	400-520kg	D3	¢/kg lwt	213	199	153	202	202	140	207	198	129	210	220	137	174	220	134
			¢/kg cwt	436	407	311	423	424	296	432	413	269	420	439	275	370	478	294
Feeder steer	330-400kg	C2	¢/kg lwt	289	284	199	295	294	196	282	280	182	258	271	170	nq	nq	nq

State over-the-hooks indicators				Queensland			NSW			Victoria			SA			Tasmania		
Category	Carcase weight	Muscle	Unit	TW	LW	LY	TW	LW	LY	TW	LW	LY	TW	LW	LY	TW	LW	LY
Trade steer	240-260kg	A-C	¢/kg cwt	514	525	381	496	519	366	522	533	345	nq	nq	355	nq	nq	nq
Medium steer	260-280kg	A-C	¢/kg cwt	506	517	378	490	516	359	496	500	330	nq	nq	355	590	590	385
Heavy steer	300-400kg	A-C	¢/kg cwt	519	530	391	500	526	368	500	504	338	nq	nq	365	590	590	385
Medium cow	260-280kg	A-E	¢/kg cwt	455	480	341	408	436	315	400	422	295	411	454	297	475	475	310
EU steer	300-340kg	A-C	¢/kg cwt	560	580	nq	580	580	400	nq	nq	nq	nq	nq	nq	nq	nq	nq
MSA Trade steer	240-260kg	A-C	¢/kg cwt	529	543	413	535	560	385	nq	nq	nq	535	560	375	590	590	405

WA saleyard indicators	Unit	TW	LW	LY
Pastoral cow	¢/kg lwt	127	125	149
Heavy cow	¢/kg lwt	157	184	170
Heavy yearling	¢/kg lwt	263	253	229
Feeder yearling	¢/kg lwt	285	292	228
WYCI	¢/kg cwt	542	492	nq

WA over-the-hooks indicators	Unit	TW	LW	LY
Grassfed yearling	¢/kg cwt	550	550	430
Grainfed yearling	¢/kg cwt	550	550	445
MSA yearling	¢/kg cwt	550	550	445
Medium cow	¢/kg cwt	nq	nq	218

Live Export Price Quotes	for week of		15/10/2015	Unit	TW	LW	LY
Light Steer	260 - 360 kg	Townsville	¢/kg lwt	300	300	210	
	260 - 360 kg	Darwin	¢/kg lwt	325	315	245	
	260 - 360 kg	Broome	¢/kg lwt	nq	nq	nq	
Light Heifer	260 - 360 kg	Townsville	¢/kg lwt	260	260	190	
	260 - 360 kg	Darwin	¢/kg lwt	305	285	225	
	260 - 360 kg	Broome	¢/kg lwt	nq	nq	nq	

TW = This week, LW = Last week, LY = Last year

Eastern Young Cattle Indicator (EYCI)

The Eastern Young Cattle Indicator, or EYCI, is a seven-day rolling average of 24 young cattle categories from 24 saleyards across Queensland, New South Wales and Victoria. It is expressed in cents per kilogram carcass (or dressed) weight (¢/kg cwt) and is rounded to the nearest ¼ cent.

The EYCI is designed to be applicable to a wide range of cattle and beef industry participants, and has sufficient diversity (both geographic and cattle type) to prevent manipulation by activity in the physical cattle market.

The young cattle market was chosen as the base for the EYCI as it is the largest, most transparent of the physical cattle markets and attracts the widest range of industry participants.

What is a seven-day rolling average?

At any point in time, a seven-day rolling average includes data from the past seven days. In the case of the EYCI, this refers to seven calendar days, or one week.

The EYCI includes vealer and yearling heifers and steers, grade score C2 or C3, with liveweight from 200kg (See table below). The EYCI currently includes cattle purchased for restocking, lot feeding and slaughter from the relevant prime sales.

Individual states were integrated into the EYCI at the commencement of NLRS reporting in that state:

NSW – August 1996

Victoria – May 1997

Queensland – October 1999

Cattle categories in the EYCI

Classification	Muscle/fat	Liveweight (kg)
Vealer steers	C2 & C3	200.1-280
		280.1-330
Vealer heifers	C2 & C3	200.1-280
		280.1-330
Yearling steers	C2 & C3	200.1-330
		330.1-400
Yearling heifers	C2 & C3	200.1-330
		330.1-400

Category specifications

The following tables show the grades that are used for the Meat & Livestock Weekly Statistics.

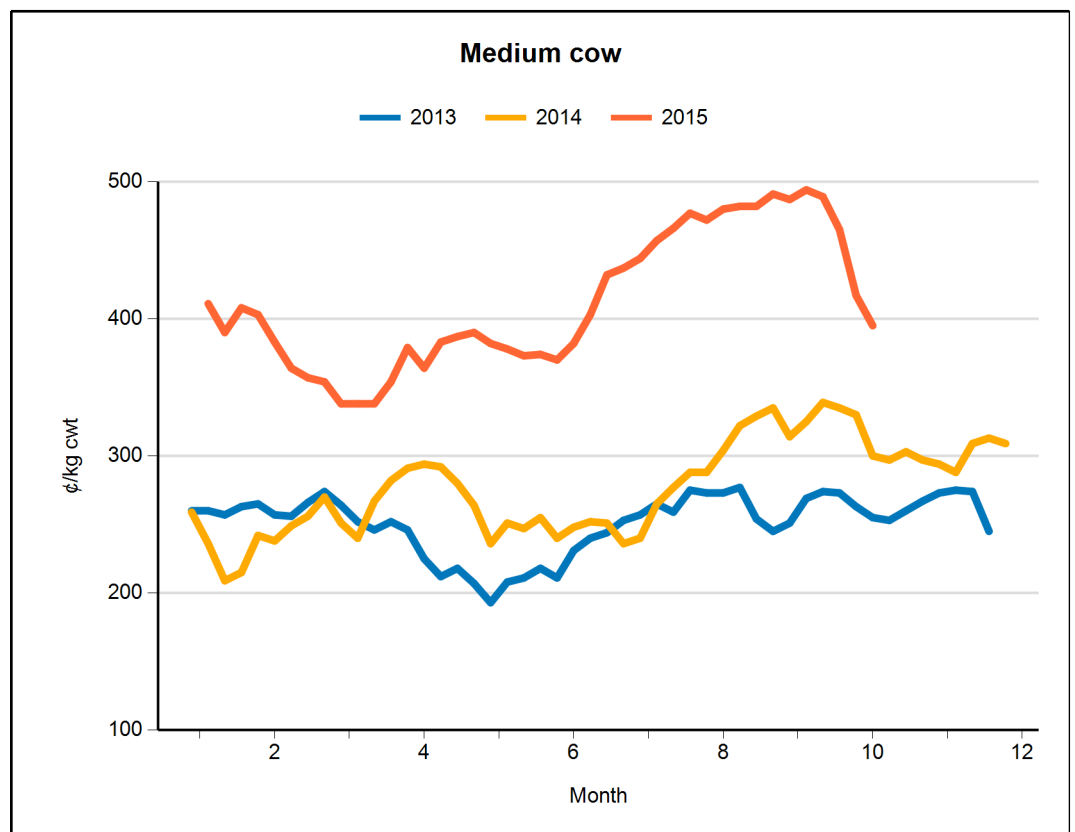
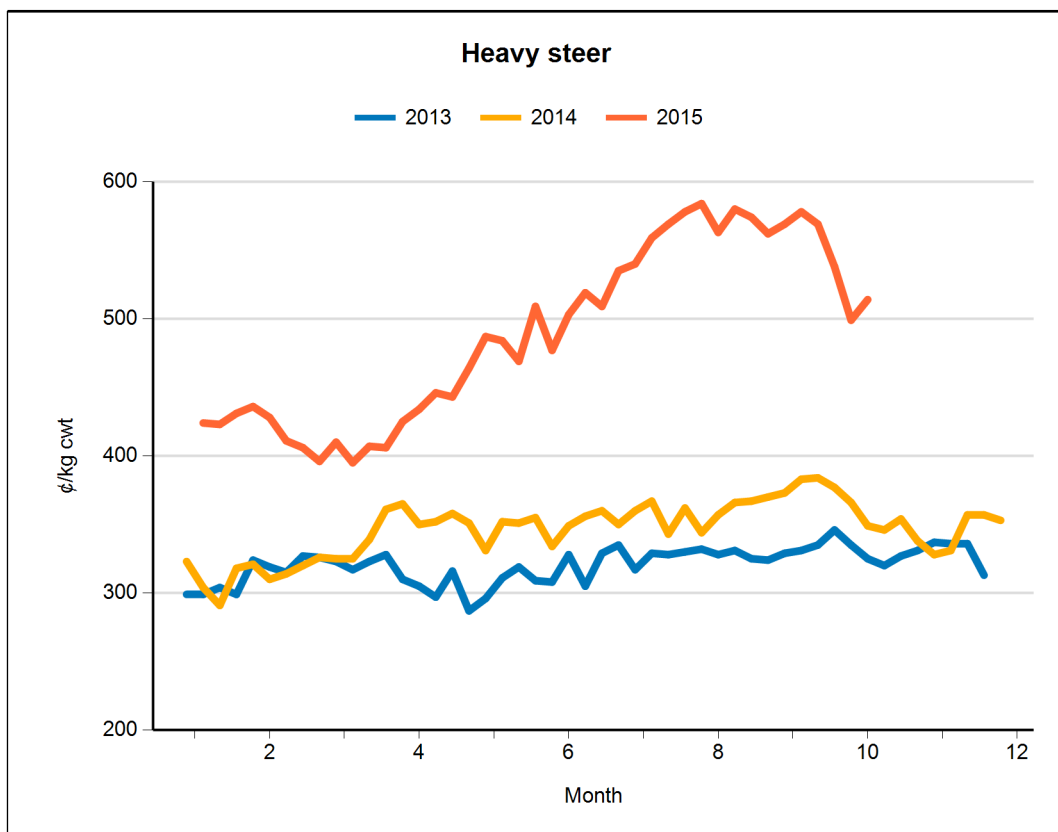
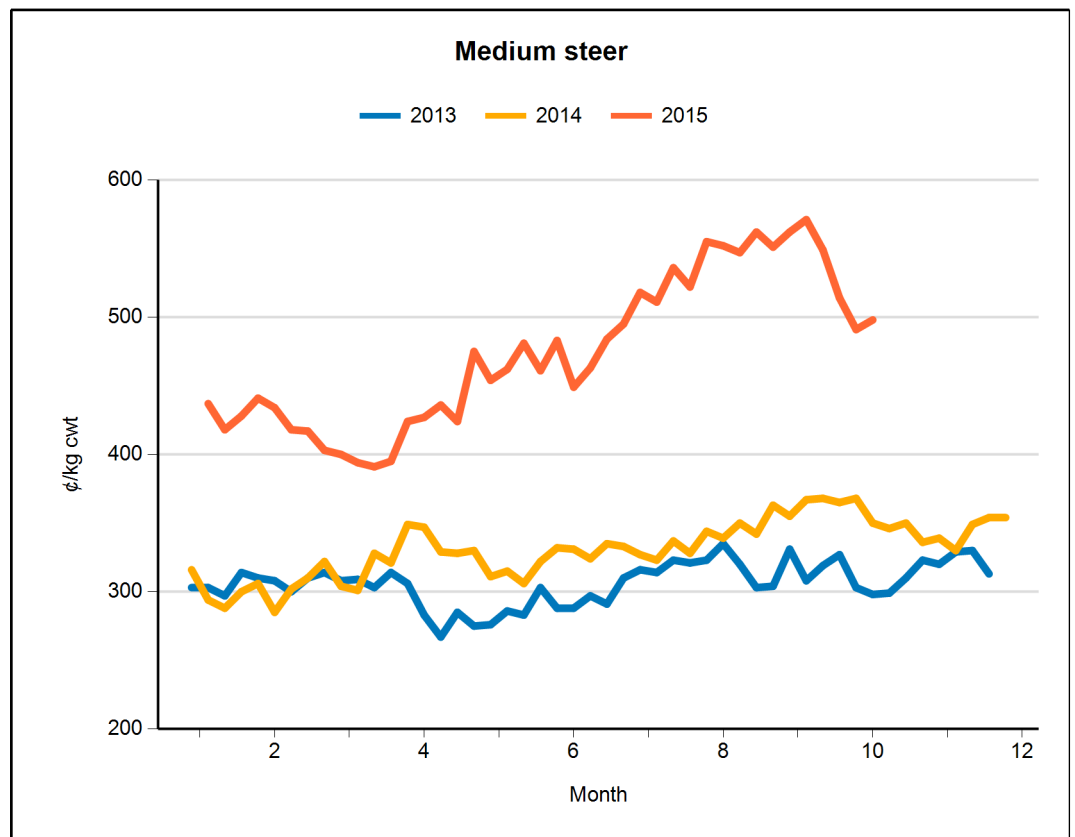
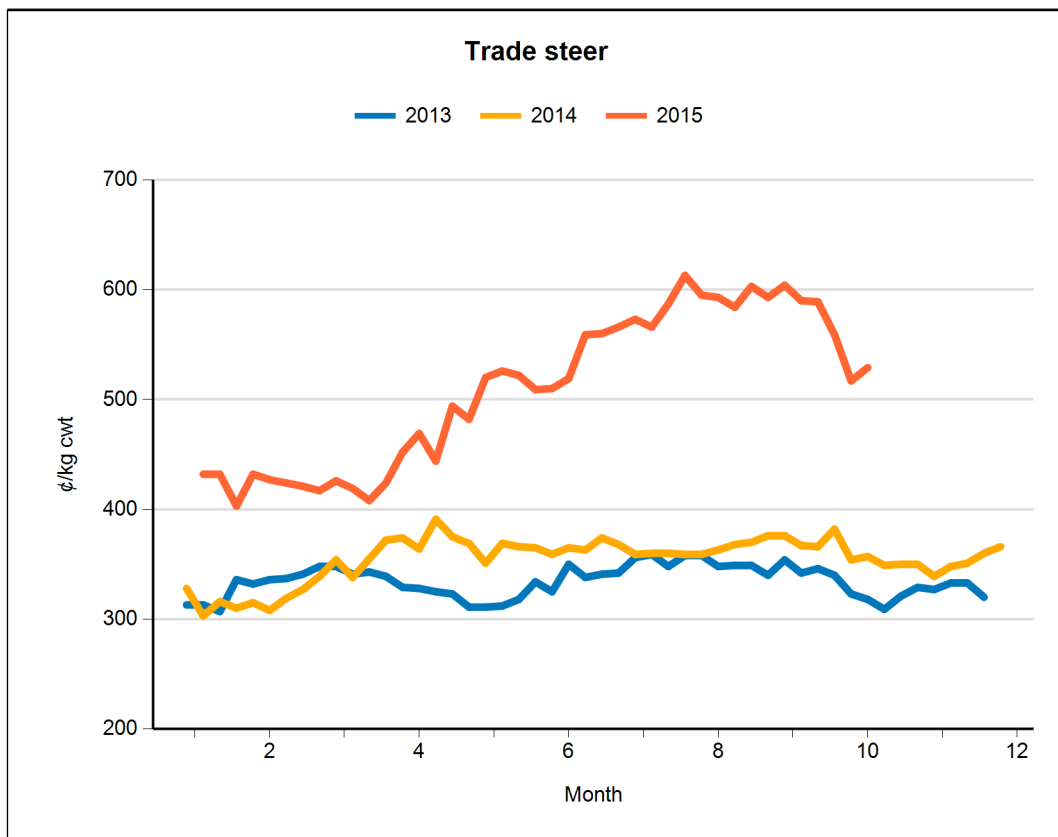
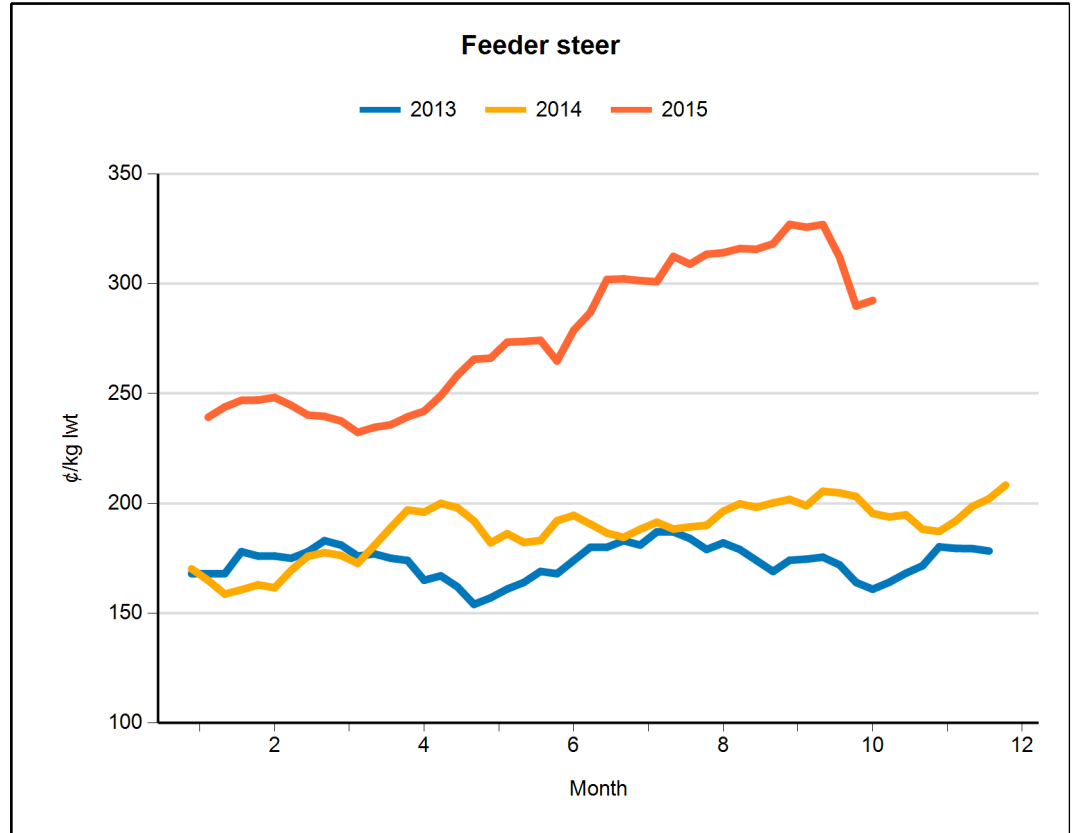
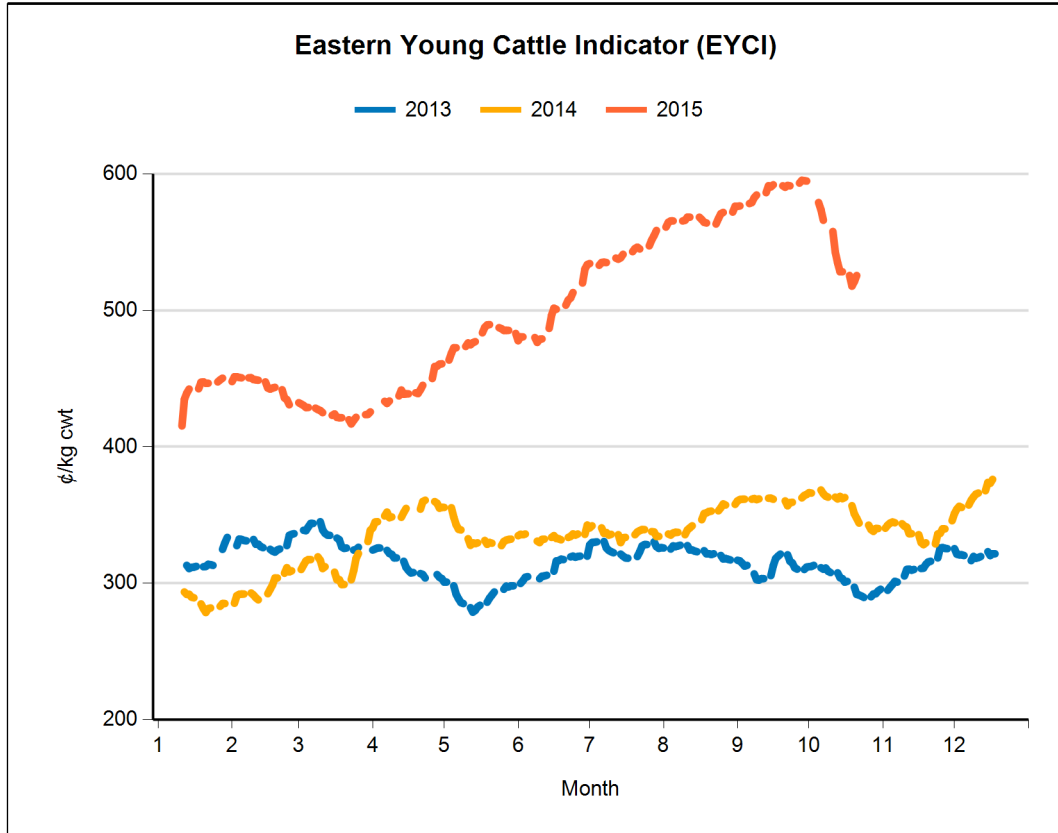
Cattle indicator weights

Stock type	Weight	Muscle/fat
Trade steer	330-400kg	C3
Medium steer	400-500kg	C3
Heavy steer	500-600kg	C4
Medium cow	400-520kg	D3
Feeder steer*	330-400kg	C2

*Yearling steer, purchased by lotfeeders

Cattle OTH indicator weights

Stock type	Weight	Muscle/fat
EU steer	240-440kg	A-C 6-22mm
Trade steer	220-280kg	A-C 3-12mm
Medium steer	260-300kg	A-C 7-22mm
Heavy steer	300-420kg	A-C 7-22mm
Medium cow	240-280kg	A-E 3-22mm





Eastern States Trade Lamb Indicator (¢/kg cwt)	22 Oct 2015	15 Oct 2015	23 Oct 2014
ESTLI	506	469	456

National saleyard sheep and lamb indicators (¢/kg cwt)		TW	LW	LY
Restocker/feeder lamb (\$/head)	0-18kg	83	76	72
Merino lamb	16-22kg	442	383	381
Light lamb	12-18kg	471	440	427
Trade lamb	18-22kg	504	469	454
Heavy lamb	22+kg	493	468	452
Mutton	18-24kg	282	270	271

National OTH sheep and lamb indicators (¢/kg cwt)		TW	LW	LY
Medium trade lamb	18-20kg	474	493	467
Heavy trade lamb	20-22kg	476	496	470
Heavy lamb	22-24kg	477	494	471
Mutton	18-24kg	273	284	265

Category specifications

The following tables show the grades that are used for the Meat & Livestock Weekly Statistics.

TW = This week, LW = Last week, LY = Last year

Sheep and lamb indicator weights

Stock type	Weight	Fat score
Restocker/feeder lamb	0-18kg	1-2
Merino lamb	16-22kg	2-3
Light lamb*	12-18kg	2-3
Trade lamb#	18-22kg	2-4
Heavy lamb#	22kg +	2-4
Mutton	18-24kg	2-3

Sheep and lamb OTH indicator weights

Stock type	Weight	Fat score
Medium trade lamb	18-20kg	2-4
Heavy trade lamb	20-22kg	2-4
Heavy lamb	22kg+	2-4
Mutton	18-24kg	2-4

*1st & 2nd cross & Merino, #1st & 2nd cross

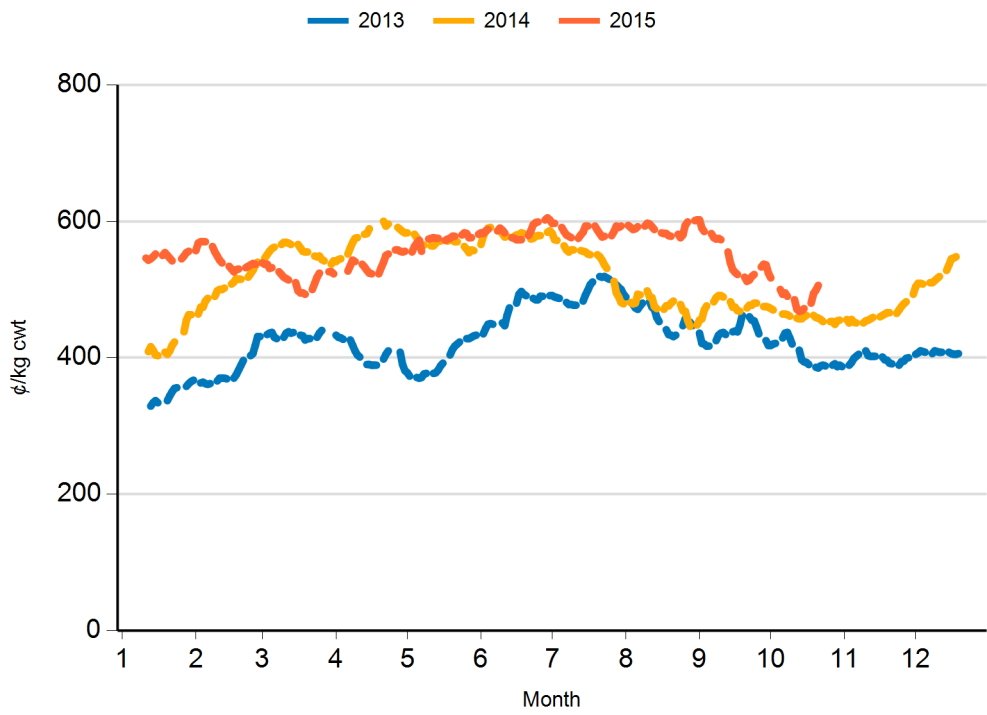
State saleyard sheep and lamb indicators (¢/kg cwt)		Victoria			NSW			SA			WA			Tasmania		
		TW	LW	LY	TW	LW	LY	TW	LW	LY	TW	LW	LY	TW	LW	LY
Restocker lamb (\$/head)	0-18kg	79	77	71	92	80	77	86	79	72	57	61	65	15	85	78
Merino lamb	16-22kg	392	359	347	451	385	386	418	389	377	407	333	450	297	nq	nq
Light lamb	12-18kg	480	420	428	461	441	414	502	472	434	434	443	456	335	445	520
Trade lamb	18-22kg	492	457	447	516	482	464	485	439	436	439	426	444	552	501	504
Heavy lamb	22+kg	486	452	444	504	488	460	474	424	438	376	437	457	513	501	476
Mutton	18-24kg	286	263	267	317	306	279	243	226	226	227	205	267	242	280	219

Over-the-hooks sheep and lamb indicators (¢/kg cwt)		Victoria			NSW			SA			WA			Tasmania		
		TW	LW	LY	TW	LW	LY	TW	LW	LY	TW	LW	LY	TW	LW	LY
Medium trade lamb	18-20kg	485	508	466	465	478	483	467	477	480	477	493	440	475	510	465
Heavy trade lamb	20-22kg	485	508	476	478	494	483	467	477	480	477	493	440	475	510	470
Heavy lamb	22-24kg	493	510	480	478	494	482	467	477	480	470	480	445	475	510	470
Mutton	18-24kg	283	283	258	273	293	288	263	263	220	247	253	250	300	330	310

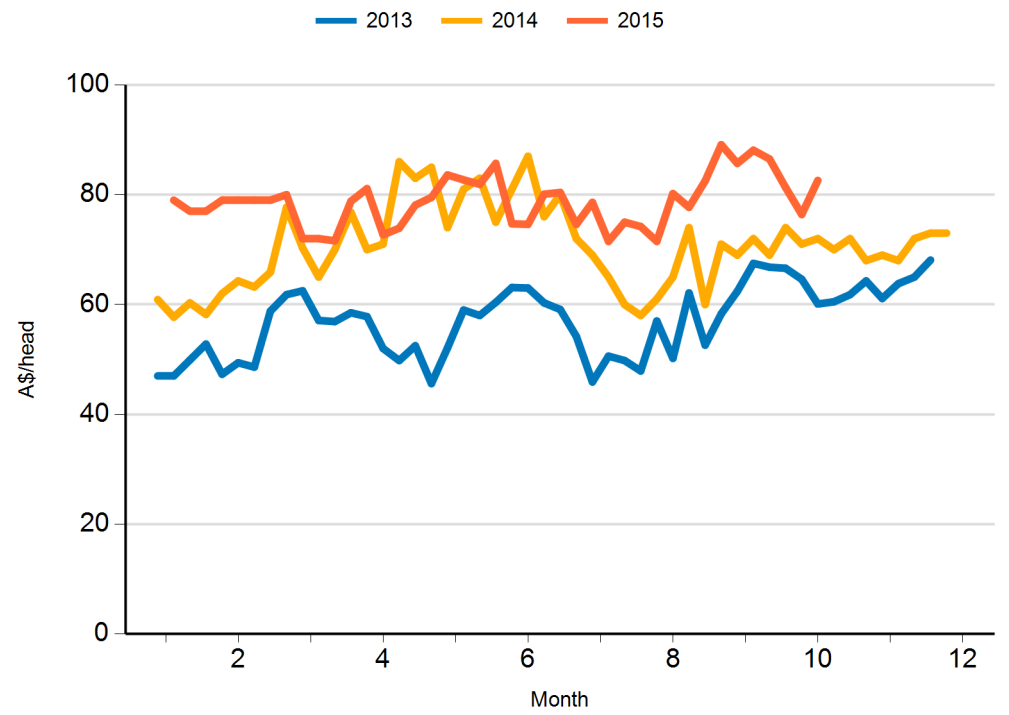
Live export price quotes (A\$/head)		TW	LW	LY
Live wether	Muchea	nq	nq	nq



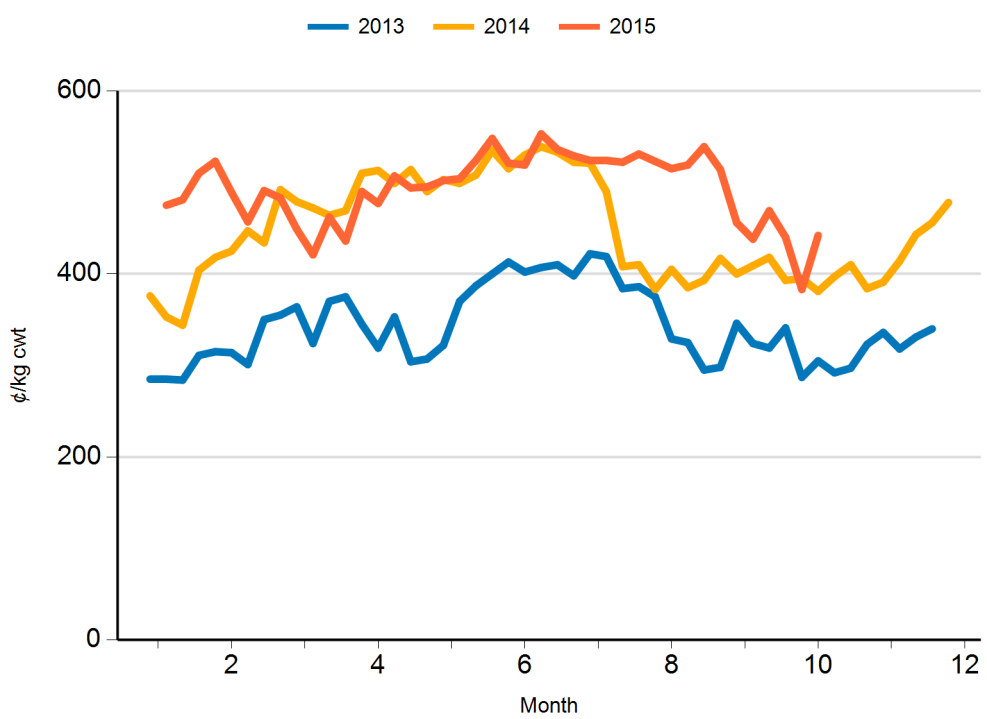
Eastern States Trade Lamb Indicator (ESTLI)



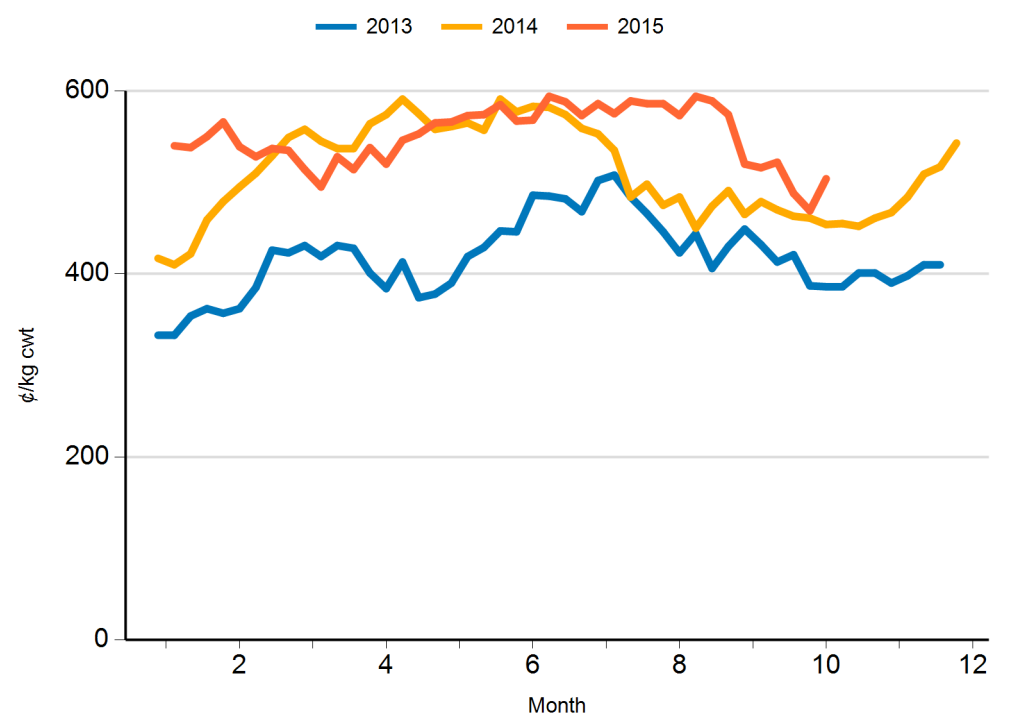
Restocker/feeder lamb



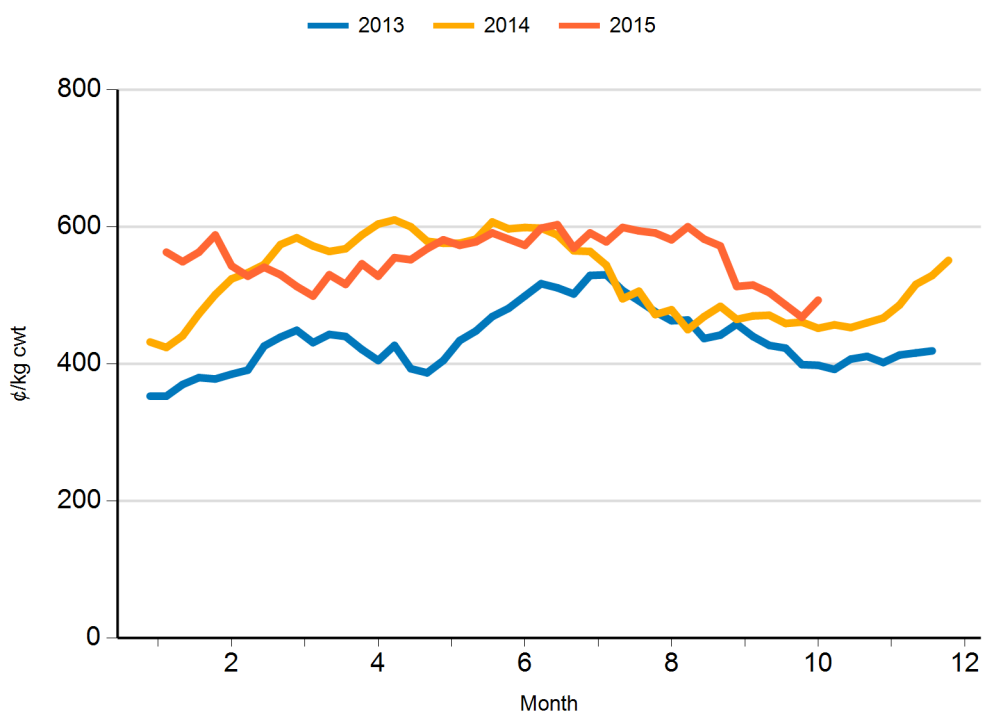
Merino lamb



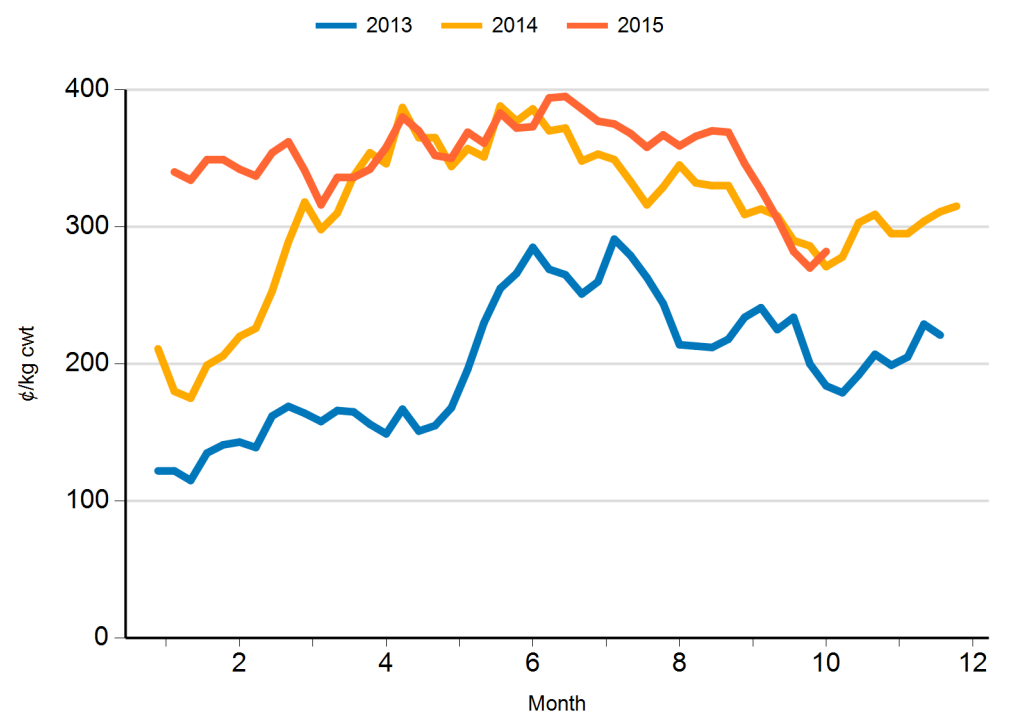
Trade lamb



Heavy lamb



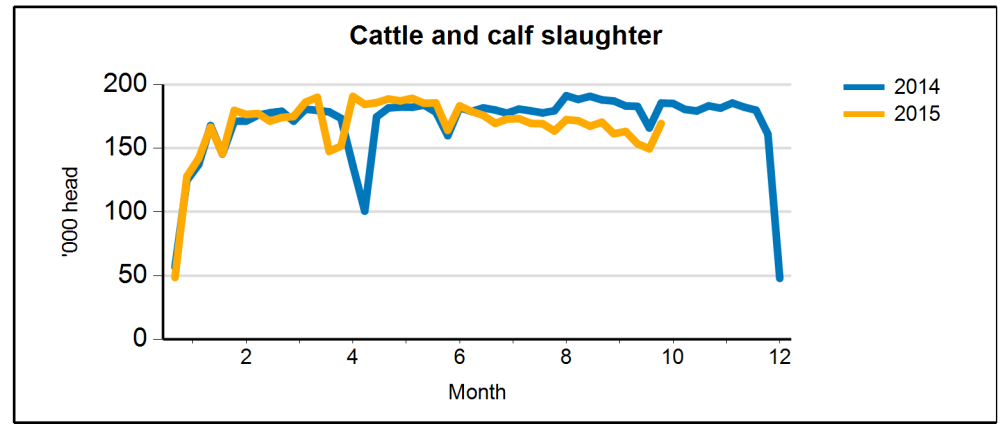
Mutton



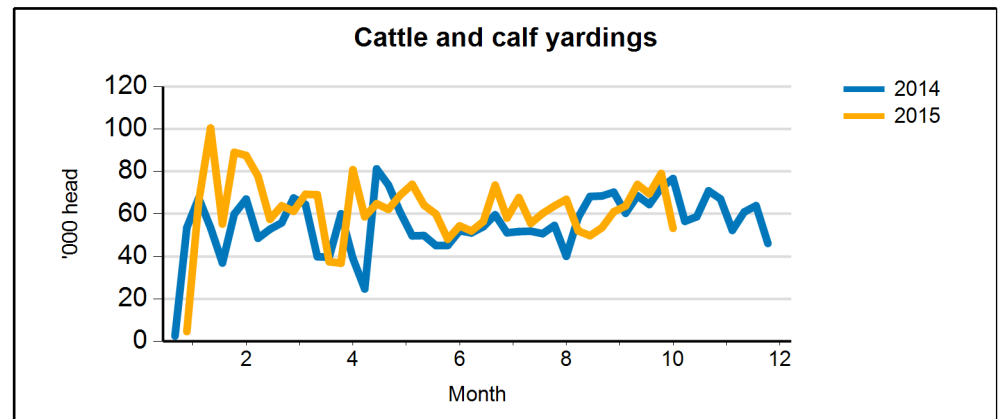


Cattle movements

Cattle slaughter		for w/e	16/10/2015	TW	LW	LY
Queensland	Cattle		80,552	69,069	85,137	
	Calves		361	346	620	
NSW	Cattle		37,250	31,270	41,396	
	Calves		2,979	2,657	4,252	
Victoria	Cattle		28,969	27,097	33,249	
	Calves		3,983	5,003	4,298	
SA	Cattle		9,179	8,130	10,210	
	Calves		26	37	38	
Tasmania	Cattle		4,930	4,322	4,947	
	Calves		1,228	1,697	1,371	

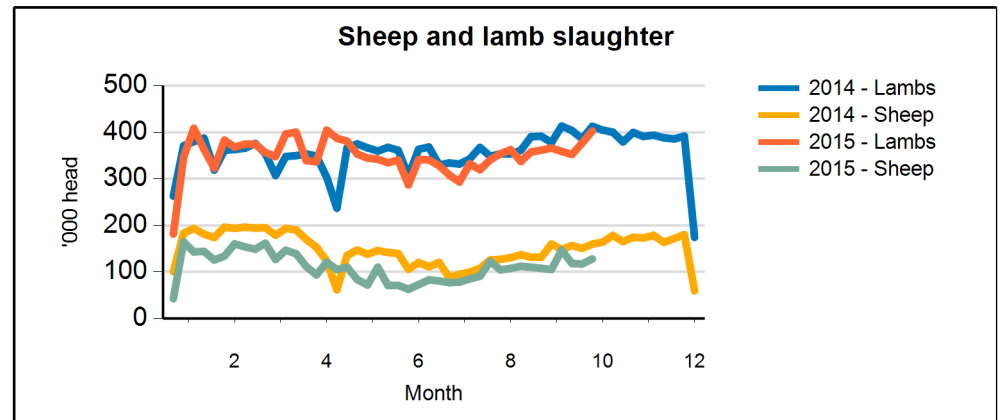


Cattle saleyard throughput		for w/e	22/10/2015	TW	LW	LY
Queensland	Cattle		15,479	25,088	19,310	
NSW	Cattle		17,107	29,569	33,043	
Victoria	Cattle		10,613	14,230	13,595	
SA	Cattle		4,275	5,429	6,218	
WA	Cattle		5,541	4,484	4,209	
Tasmania	Cattle		235	270	328	

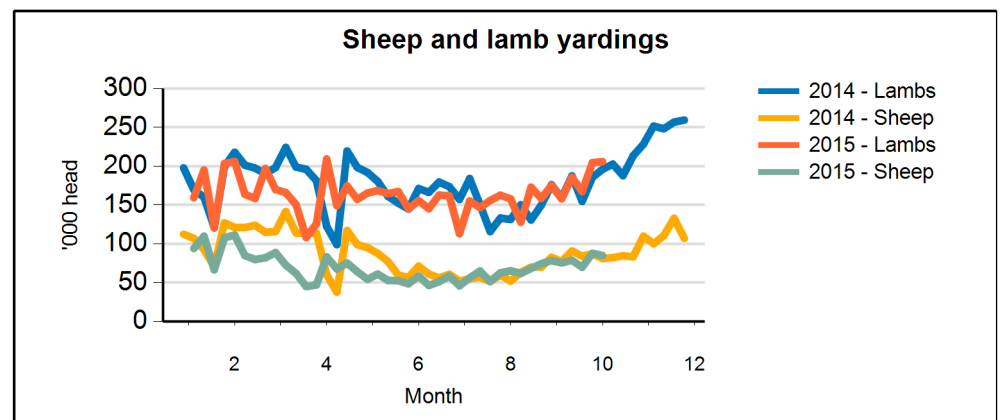


Sheep and lamb movements

Sheep and lamb slaughter		for w/e	16/10/2015	TW	LW	LY
Victoria	Lambs		193,983	197,333	202,468	
	Sheep		53,919	50,664	69,259	
NSW	Lambs		100,965	79,444	101,200	
	Sheep		34,178	27,829	47,169	
SA	Lambs		84,311	80,943	85,518	
	Sheep		26,839	29,256	32,110	
Queensland	Lambs		6,563	5,397	5,944	
	Sheep		10,359	7,162	8,838	
Tasmania	Lambs		16,934	13,641	17,550	
	Sheep		2,745	2,183	2,339	

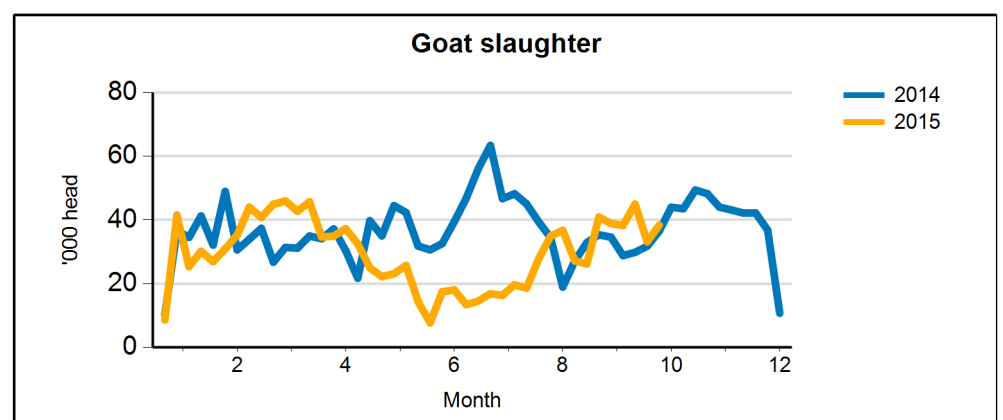


Sheep and lamb saleyard throughput		for w/e	22/10/2015	TW	LW	LY
Victoria	Lambs		49,596	57,313	66,115	
	Sheep		18,307	23,675	20,976	
NSW	Lambs		106,333	104,401	82,340	
	Sheep		41,374	39,635	38,560	
SA	Lambs		34,036	30,267	36,332	
	Sheep		5,328	5,447	7,480	
WA	Lambs		15,195	11,719	10,621	
	Sheep		19,135	18,500	13,600	
Tasmania	Lambs		775	880	645	
	Sheep		850	520	600	



Goat movements

Goat slaughter		for w/e	16/10/2015	TW	LW	LY
Queensland	Goats		15,161	10,630	17,354	
NSW	Goats		3,139	2,818	1,704	
Victoria	Goats		13,198	14,695	11,778	
SA	Goats		6,870	5,022	5,622	
Tasmania	Goats		nq	11	nq	





Over-the-hooks goat indicators (A¢/kg cwt)	TW	LF	LY
8.1-10kg	482	480	348
10.1-12kg	482	481	349
12.1-16kg	482	481	349
16.1-20kg	482	481	352
20.1kg+	482	481	349

Skin indicators - Lambs		TW	LW	LY
2" +	16.1 - 20kg	563	563	250
	20.1 - 24kg	638	638	513
	24.1kg +	863	863	613
1" - 2"	16.1 - 20kg	575	575	163
	20.1 - 24kg	775	775	375
	24.1kg +	900	900	475
0.5" - 1"	16.1 - 20kg	250	250	200
	20.1 - 24kg	538	538	213
	24.1kg +	725	725	250
New Season	16.1 - 20kg	600	600	400
	20.1 - 24kg	950	925	613
	24.1kg +	1175	1150	763

Skin indicators - Merino sheep (average 25 micron)		TW	LW	LY
1.5" - 2"	16.1 - 20kg	900	900	400
	20.1 - 24kg	975	975	563
	24.1kg +	1125	1125	550

Eastern Market Wool Indicator (A¢/kg)	TW	LW	LY
AWEX E.M.I	1181	1179	1038
Source: Australian Wool Exchange Ltd			

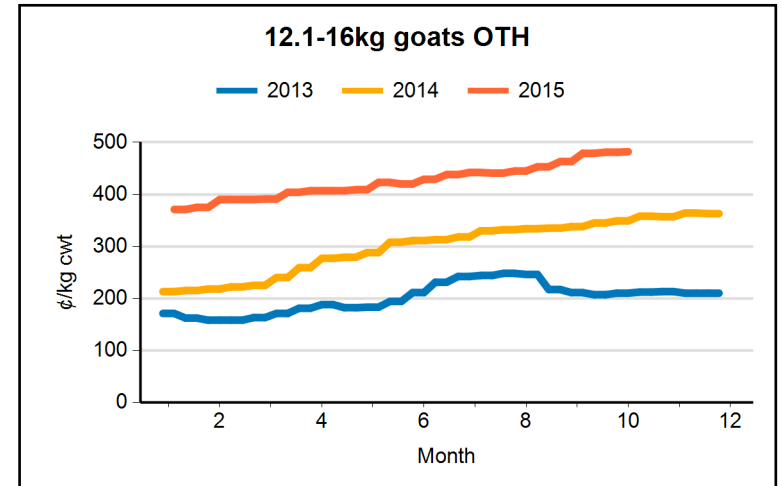
Fodder prices (A\$/tonne)	Cereal			Lucerne			Straw			Pasture		
	TW	LW	LY	TW	LW	LY	TW	LW	LY	TW	LW	LY
Darling Downs	325	nq	390	460	nq	475	180	nq	230	285	nq	nq
Central West NSW	255	nq	225	370	nq	290	140	nq	nq	nq	nq	nq
Goulburn Valley	205	nq	190	210	nq	300	95	nq	100	160	nq	160
South East SA	240	nq	210	310	nq	310	120	nq	110	200	nq	145
South West WA	200	nq	170	495	nq	525	100	nq	100	180	nq	nq
Source: Dairy Australia												

Tallow (A\$/tonne, delivered in store)	TW	LW	LY
Prime - Melbourne	nq	nq	nq
Prime - Brisbane	nq	nq	nq
Bleachable fancy	nq	nq	nq
Source: Trade			

Grain prices - Darling Downs (A\$/tonne)	TW	LW	LY
Barley	260	264	280
Sorghum	270	265	277
Wheat	285	287	292

Grain prices - Riverina (A\$/tonne)	TW	LW	LY
Wheat	275	291	264
Barley	245	250	243
Source: Profarmer Australia			

US imported beef prices (CIF)		TW	LW	LY
Bull 95CL	US¢/lb	213.8	226.5	301.3
	A¢/kg	650.1	684.7	757.0
Cow 90CL	US¢/lb	201.5	210.0	283.5
	A¢/kg	612.9	634.8	712.4
CC/CF 85CL	US¢/lb	177.5	184.0	266.0
	A¢/kg	539.9	556.2	668.4
Shank 90CL	US¢/lb	197.5	207.0	279.5
	A¢/kg	600.7	625.7	702.4
Trim 85CL	US¢/lb	177.0	183.0	265.0
	A¢/kg	538.4	553.2	665.9
Trim 80CL	US¢/lb	147.5	152.5	245.0
	A¢/kg	448.6	461.0	615.7
Trim 75CL	US¢/lb	127.5	130.5	233.0
	A¢/kg	387.8	394.5	585.5
Trim 65CL	US¢/lb	92.5	97.0	166.0
	A¢/kg	281.3	293.2	417.1
Outside flats	US¢/lb	225.0	257.5	297.5
	A¢/kg	684.3	778.4	747.6
Knuckles	US¢/lb	247.5	261.0	312.5
	A¢/kg	752.8	789.0	785.3
Inside cap off	US¢/lb	312.5	312.5	342.5
	A¢/kg	950.5	944.6	860.7
Source: Steiner Consulting Group				



PLEASE NOTE
US imported beef prices are now reported only in CIF terms.
They are no longer converted to FAS terms.
Prices from LW in A¢/kg are revised to account for exchange rates from Friday-Sunday

