



Eastern Young Cattle Indicator	Unit	21 May 2015	14 May 2015	22 May 2014
EYCI	¢/kg cwt	489.50	476.25	329.25

National saleyard indicators	Live weight	Muscle/Fat	Unit	TW	LW	LY
Trade steer	330-400kg	C3	¢/kg lwt	285	282	199
			¢/kg cwt	526	520	369
Medium steer	400-500kg	C3	¢/kg lwt	250	246	170
			¢/kg cwt	462	454	315
Heavy steer	500-600kg	C4	¢/kg lwt	265	266	191
			¢/kg cwt	484	487	352
Medium cow	400-520kg	D3	¢/kg lwt	184	184	120
			¢/kg cwt	378	382	251
Feeder steer	330-400kg	C2	¢/kg lwt	273	266	186

Eastern states OTH indicators	Carcase weight	Muscle	Unit	TW	LW	LY
Trade steer	240-260kg	A-C	¢/kg cwt	447	439	327
Medium steer	260-280kg	A-C	¢/kg cwt	431	427	336
Heavy steer	300-400kg	A-C	¢/kg cwt	439	434	341
Medium cow	260-280kg	A-E	¢/kg cwt	378	376	276
MSA Trade steer	240-260kg	A-C	¢/kg cwt	468	463	376

Feeder cattle indicators - paddock sales						
for week of		14/05/2015	Unit	TW	LW	LY
Domestic			Unit			
Steers 280-350kg			¢/kg lwt	254	253	194
Heifers 280-350kg			¢/kg lwt	235	234	179
Export			Unit			
Shortfed 100-120 DOF			¢/kg lwt	272	267	187
Mediumfed 120-220 DOF			¢/kg lwt	290	279	207
Longfed 220+ DOF			¢/kg lwt	295	278	216

State saleyard indicators				Queensland			NSW			Victoria			SA			Tasmania		
Category	Live weight	Muscle/Fat	Unit	TW	LW	LY	TW	LW	LY	TW	LW	LY	TW	LW	LY	TW	LW	LY
Trade steer	330-400kg	C3	¢/kg lwt	nq	236	183	290	288	194	282	278	207	276	280	200	209	204	nq
			¢/kg cwt	nq	429	333	538	536	364	519	510	381	502	510	374	387	378	nq
Medium steer	400-500kg	C3	¢/kg lwt	226	229	159	271	251	178	265	261	187	271	281	187	206	nq	nq
			¢/kg cwt	410	416	289	508	471	333	500	488	349	494	511	353	389	nq	nq
Heavy steer	500-600kg	C4	¢/kg lwt	233	238	165	286	282	197	286	276	197	nq	nq	nq	nq	nq	nq
			¢/kg cwt	419	428	298	528	519	364	524	509	364	nq	nq	nq	nq	nq	nq
Medium cow	400-520kg	D3	¢/kg lwt	176	180	115	189	185	117	193	193	130	193	199	126	159	165	92
			¢/kg cwt	359	367	235	395	390	247	400	399	269	385	398	253	339	370	203
Feeder steer	330-400kg	C2	¢/kg lwt	260	253	173	278	273	187	265	259	185	250	251	184	nq	nq	nq

State over-the-hooks indicators				Queensland			NSW			Victoria			SA			Tasmania		
Category	Carcase weight	Muscle	Unit	TW	LW	LY	TW	LW	LY	TW	LW	LY	TW	LW	LY	TW	LW	LY
Trade steer	240-260kg	A-C	¢/kg cwt	430	426	335	439	439	342	471	452	320	nq	nq	310	nq	nq	nq
Medium steer	260-280kg	A-C	¢/kg cwt	421	416	305	439	439	329	456	441	340	nq	nq	nq	410	410	370
Heavy steer	300-400kg	A-C	¢/kg cwt	434	429	313	448	448	337	464	449	345	nq	nq	nq	410	410	370
Medium cow	260-280kg	A-E	¢/kg cwt	384	381	283	385	383	264	381	375	282	406	406	270	335	335	280
EU steer	300-340kg	A-C	¢/kg cwt	518	508	nq	480	480	385	nq	nq	nq	nq	nq	nq	nq	nq	nq
MSA Trade steer	240-260kg	A-C	¢/kg cwt	474	467	382	473	473	361	nq	nq	nq	497	483	nq	430	430	385

WA saleyard indicators	Unit	TW	LW	LY
Pastoral cow	¢/kg lwt	190	170	140
Heavy cow	¢/kg lwt	216	198	182
Heavy yearling	¢/kg lwt	277	273	226
Feeder yearling	¢/kg lwt	267	287	229

WA over-the-hooks indicators	Unit	TW	LW	LY
Grassfed yearling	¢/kg cwt	520	520	nq
Grainfed yearling	¢/kg cwt	518	500	385
MSA yearling	¢/kg cwt	518	500	355
Medium cow	¢/kg cwt	nq	nq	218

Live Export Price Quotes		for week of	14/05/2015	Unit	TW	LW	LY
Light Steer	260 - 360 kg	Townsville	¢/kg lwt	220	220	nq	
	260 - 360 kg	Darwin	¢/kg lwt	nq	nq	nq	
	260 - 360 kg	Broome	¢/kg lwt	nq	nq	nq	
Light Heifer	260 - 360 kg	Townsville	¢/kg lwt	190	190	nq	
	260 - 360 kg	Darwin	¢/kg lwt	nq	nq	nq	
	260 - 360 kg	Broome	¢/kg lwt	nq	nq	nq	

TW = This week, LW = Last week, LY = Last year

Eastern Young Cattle Indicator (EYCI)

The Eastern Young Cattle Indicator, or EYCI, is a seven-day rolling average of 24 young cattle categories from 24 saleyards across Queensland, New South Wales and Victoria. It is expressed in cents per kilogram carcass (or dressed) weight (¢/kg cwt) and is rounded to the nearest ¼ cent.

The EYCI is designed to be applicable to a wide range of cattle and beef industry participants, and has sufficient diversity (both geographic and cattle type) to prevent manipulation by activity in the physical cattle market.

The young cattle market was chosen as the base for the EYCI as it is the largest, most transparent of the physical cattle markets and attracts the widest range of industry participants.

What is a seven-day rolling average?

At any point in time, a seven-day rolling average includes data from the past seven days. In the case of the EYCI, this refers to seven calendar days, or one week.

The EYCI includes vealer and yearling heifers and steers, grade score C2 or C3, with liveweight from 200kg (See table below). The EYCI currently includes cattle purchased for restocking, lot feeding and slaughter from the relevant prime sales.

Individual states were integrated into the EYCI at the commencement of NLRs reporting in that state:

NSW – August 1996

Victoria – May 1997

Queensland – October 1999

Cattle categories in the EYCI

Classification	Muscle/fat	Liveweight (kg)
Vealer steers	C2 & C3	200.1-280
		280.1-330
Vealer heifers	C2 & C3	200.1-280
		280.1-330
Yearling steers	C2 & C3	200.1-330
		330.1-400
Yearling heifers	C2 & C3	200.1-330
		330.1-400

Category specifications

The following tables show the grades that are used for the Meat & Livestock Weekly Statistics.

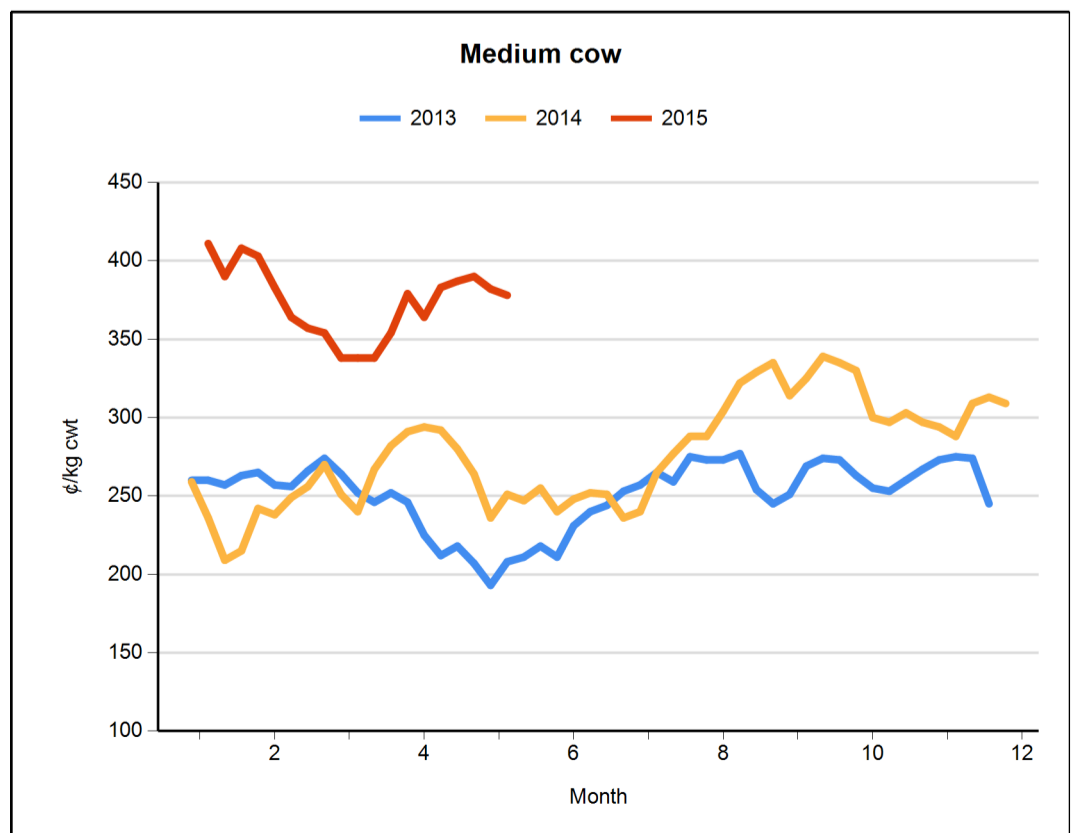
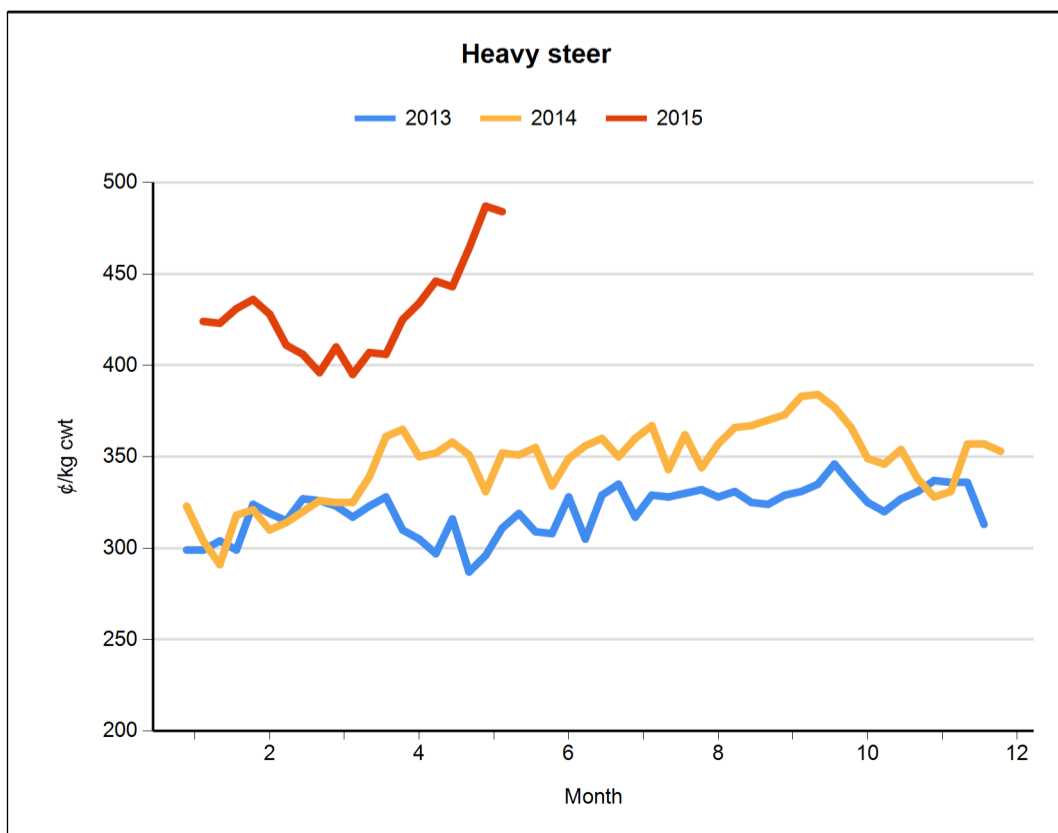
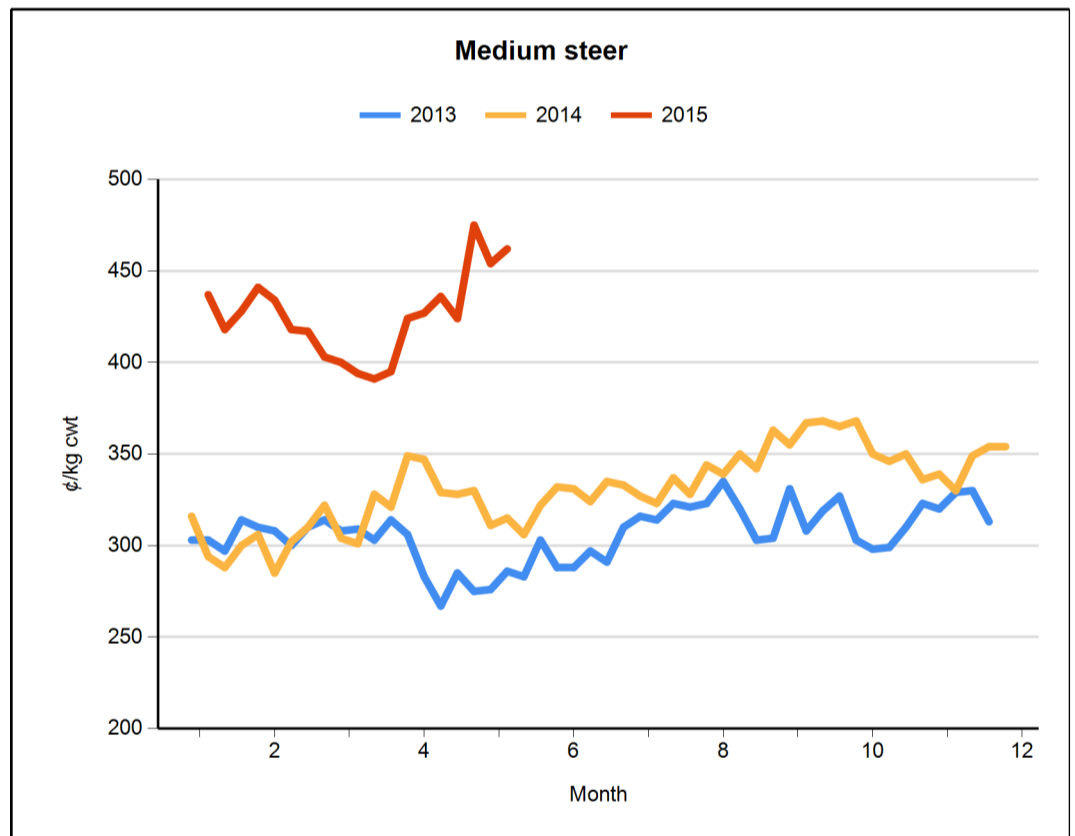
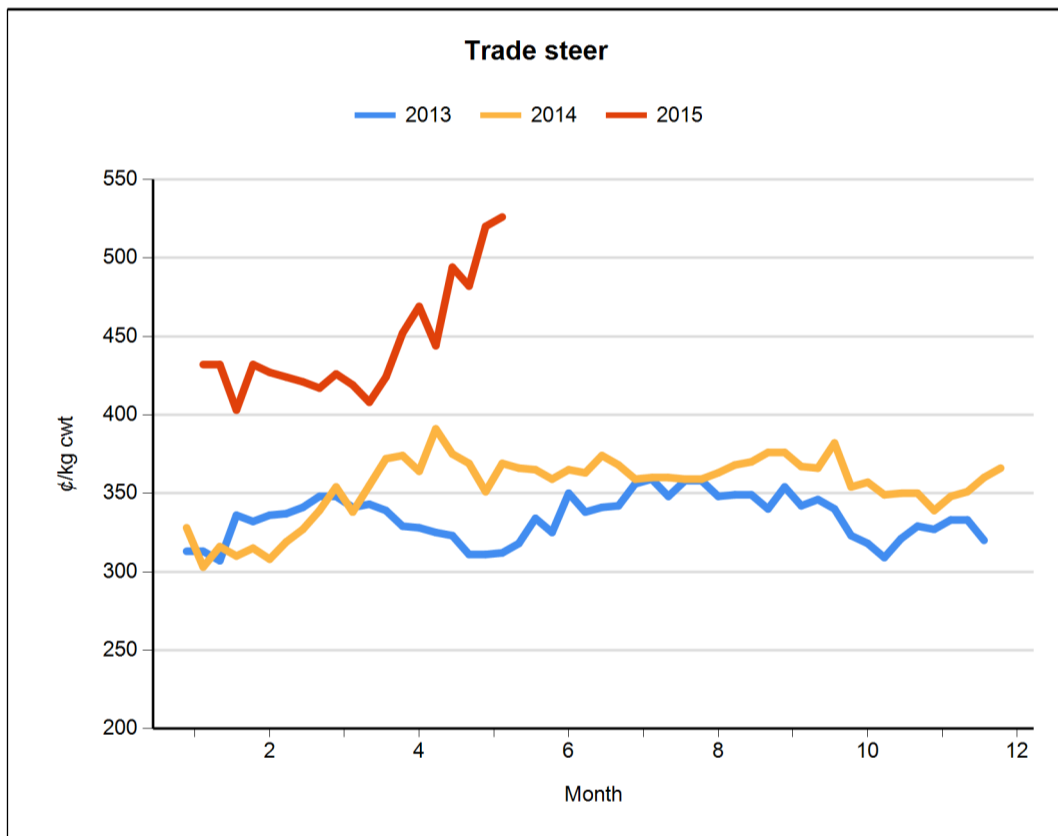
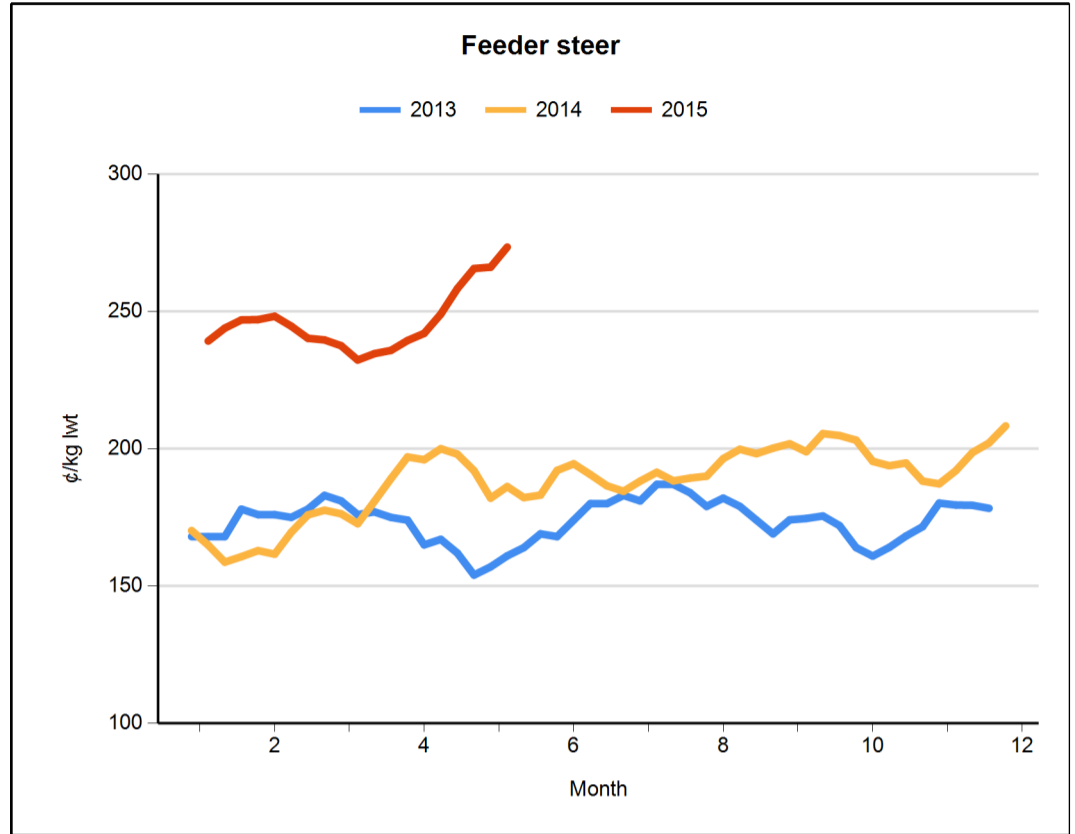
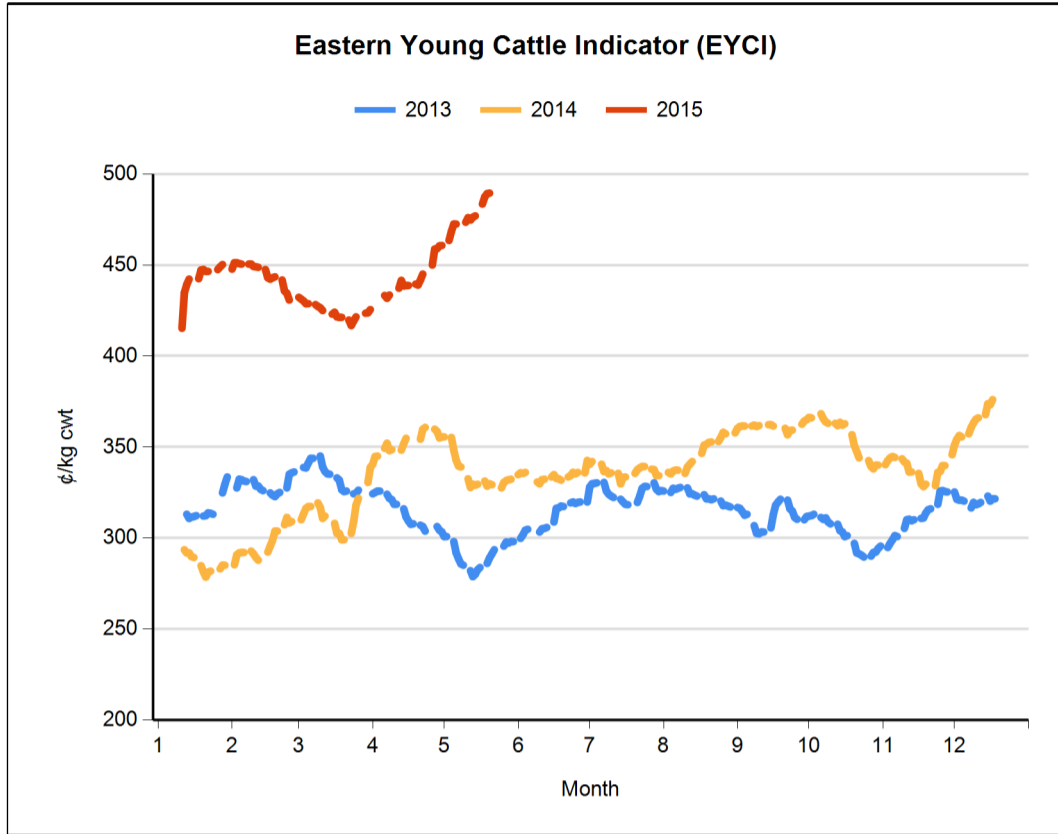
Cattle indicator weights

Stock type	Weight	Muscle/fat
Trade steer	330-400kg	C3
Medium steer	400-500kg	C3
Heavy steer	500-600kg	C4
Medium cow	400-520kg	D3
Feeder steer*	330-400kg	C2

*Yearling steer, purchased by lotfeeders

Cattle OTH indicator weights

Stock type	Weight	Muscle/fat
EU steer	240-440kg	A-C 6-22mm
Trade steer	220-280kg	A-C 3-12mm
Medium steer	260-300kg	A-C 7-22mm
Heavy steer	300-420kg	A-C 7-22mm
Medium cow	240-280kg	A-E 3-22mm





Eastern States Trade Lamb Indicator (¢/kg cwt)	21 May 2015	14 May 2015	22 May 2014
ESTLI	578	575	570

National saleyard sheep and lamb indicators (¢/kg cwt)		TW	LW	LY
Restocker/feeder lamb (\$/head)	0-18kg	83	84	81
Merino lamb	16-22kg	504	502	499
Light lamb	12-18kg	537	532	505
Trade lamb	18-22kg	573	566	565
Heavy lamb	22+kg	573	581	576
Mutton	18-24kg	369	350	357

National OTH sheep and lamb indicators (¢/kg cwt)		TW	LW	LY
Medium trade lamb	18-20kg	548	543	577
Heavy trade lamb	20-22kg	552	547	577
Heavy lamb	22-24kg	552	549	574
Mutton	18-24kg	331	327	322

Category specifications

The following tables show the grades that are used for the Meat & Livestock Weekly Statistics.

TW = This week, LW = Last week, LY = Last year

Sheep and lamb indicator weights

Stock type	Weight	Fat score
Restocker/feeder lamb	0-18kg	1-2
Merino lamb	16-22kg	2-3
Light lamb*	12-18kg	2-3
Trade lamb#	18-22kg	2-4
Heavy lamb#	22kg +	2-4
Mutton	18-24kg	2-3

Sheep and lamb OTH indicator weights

Stock type	Weight	Fat score
Medium trade lamb	18-20kg	2-4
Heavy trade lamb	20-22kg	2-4
Heavy lamb	22kg+	2-4
Mutton	18-24kg	2-4

*1st & 2nd cross & Merino, #1st & 2nd cross

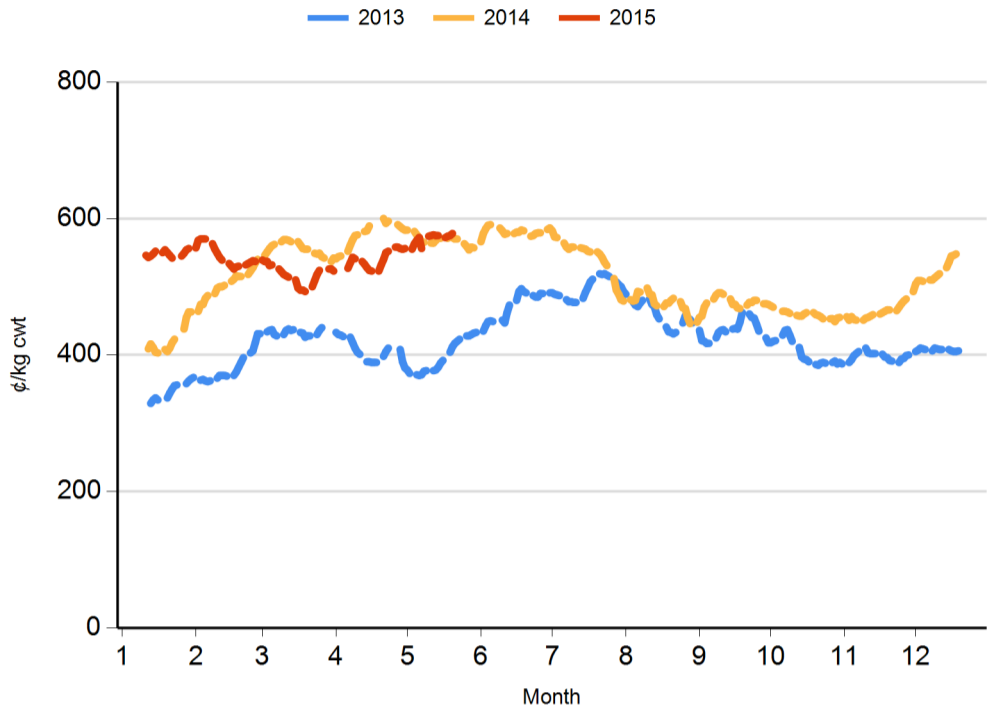
State saleyard sheep and lamb indicators (¢/kg cwt)		Victoria			NSW			SA			WA			Tasmania		
		TW	LW	LY	TW	LW	LY	TW	LW	LY	TW	LW	LY	TW	LW	LY
Restocker lamb (\$/head)	0-18kg	77	87	82	90	87	80	88	77	84	70	76	73	89	85	79
Merino lamb	16-22kg	510	534	488	509	516	508	485	482	467	461	471	528	nq	nq	nq
Light lamb	12-18kg	568	576	523	526	535	494	510	509	477	479	469	528	557	494	515
Trade lamb	18-22kg	587	580	573	579	576	571	532	544	527	529	513	518	558	546	530
Heavy lamb	22+kg	579	574	588	580	596	576	534	543	562	525	505	530	534	542	511
Mutton	18-24kg	386	359	377	382	363	339	372	348	335	260	281	378	353	362	323

Over-the-hooks sheep and lamb indicators (¢/kg cwt)		Victoria			NSW			SA			WA			Tasmania		
		TW	LW	LY	TW	LW	LY	TW	LW	LY	TW	LW	LY	TW	LW	LY
Medium trade lamb	18-20kg	580	573	602	539	535	596	553	nq	600	547	542	523	520	520	565
Heavy trade lamb	20-22kg	580	573	602	558	554	596	553	nq	600	547	542	523	520	520	565
Heavy lamb	22-24kg	580	573	602	556	551	588	553	nq	600	540	540	513	530	530	565
Mutton	18-24kg	360	360	348	334	331	335	360	nq	340	270	285	233	330	330	355

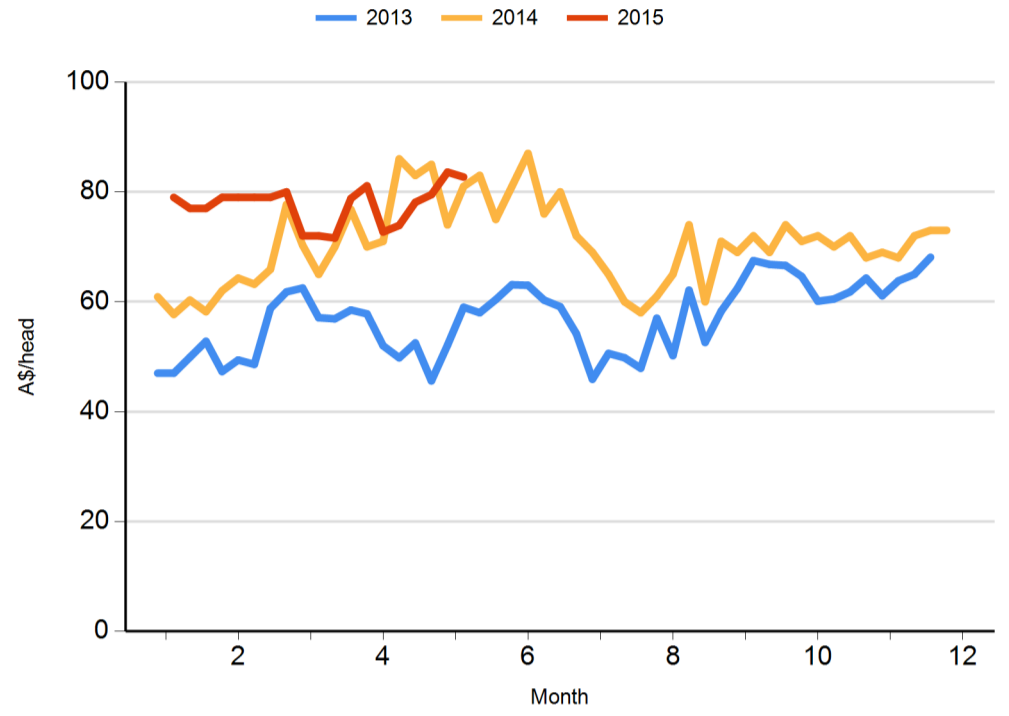
Live export price quotes (A\$/head)		TW	LW	LY
Live wether	Muchea	93	98	91



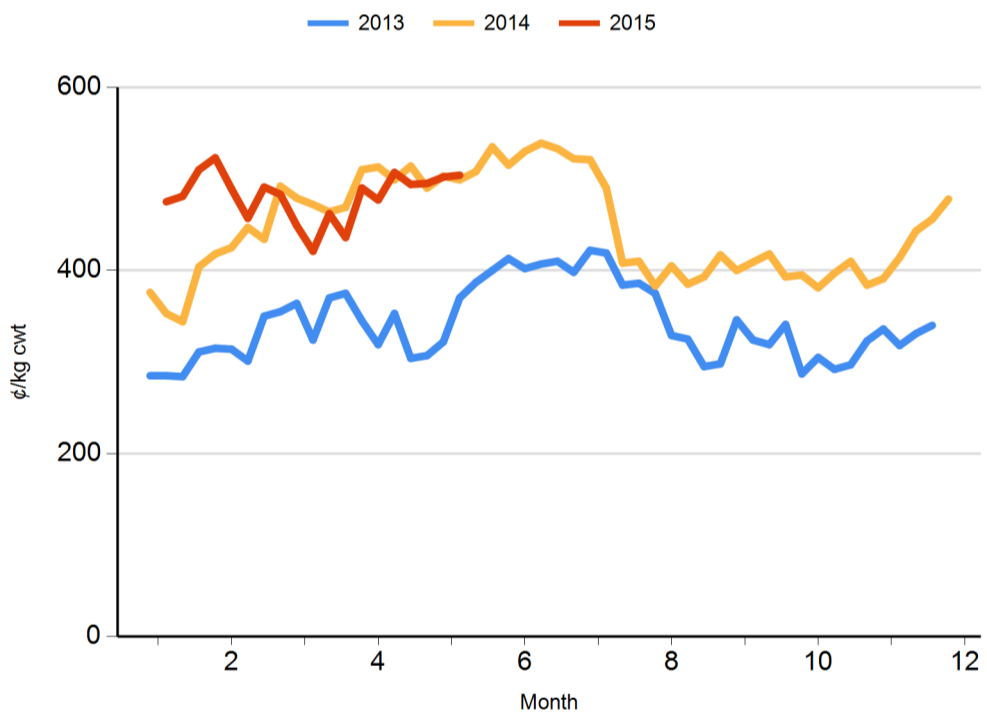
Eastern States Trade Lamb Indicator (ESTLI)



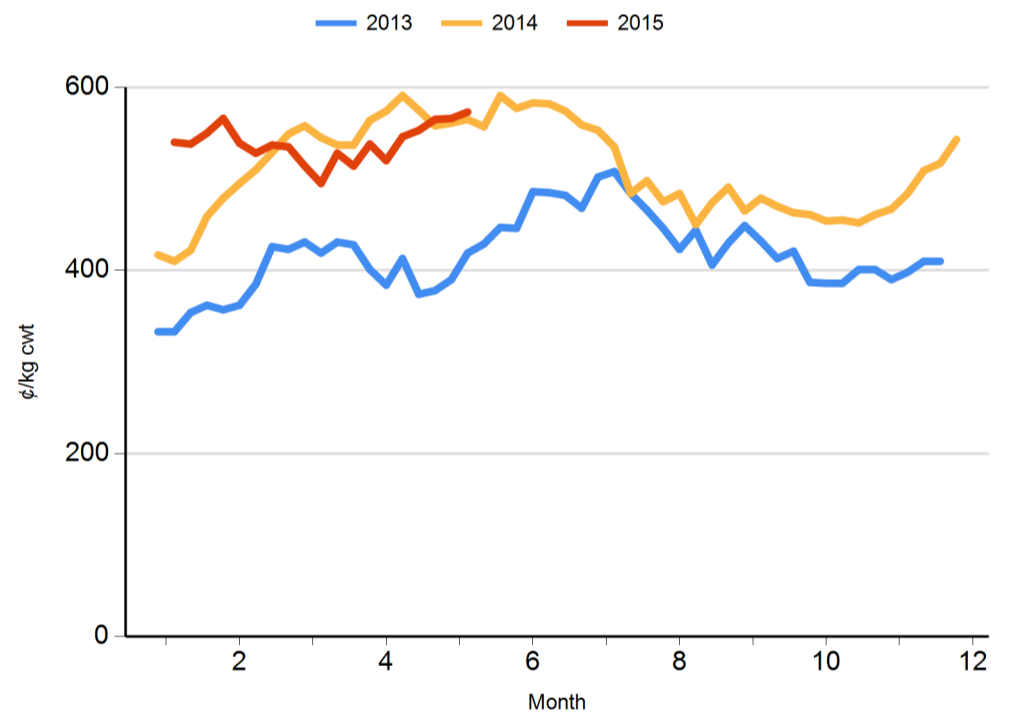
Restocker/feeder lamb



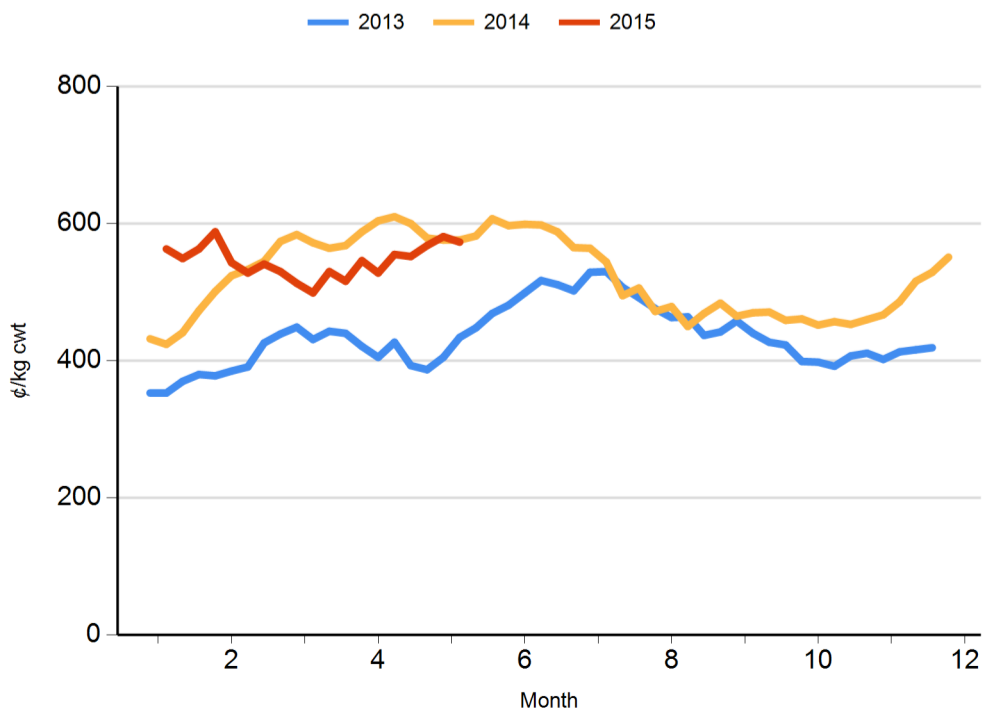
Merino lamb



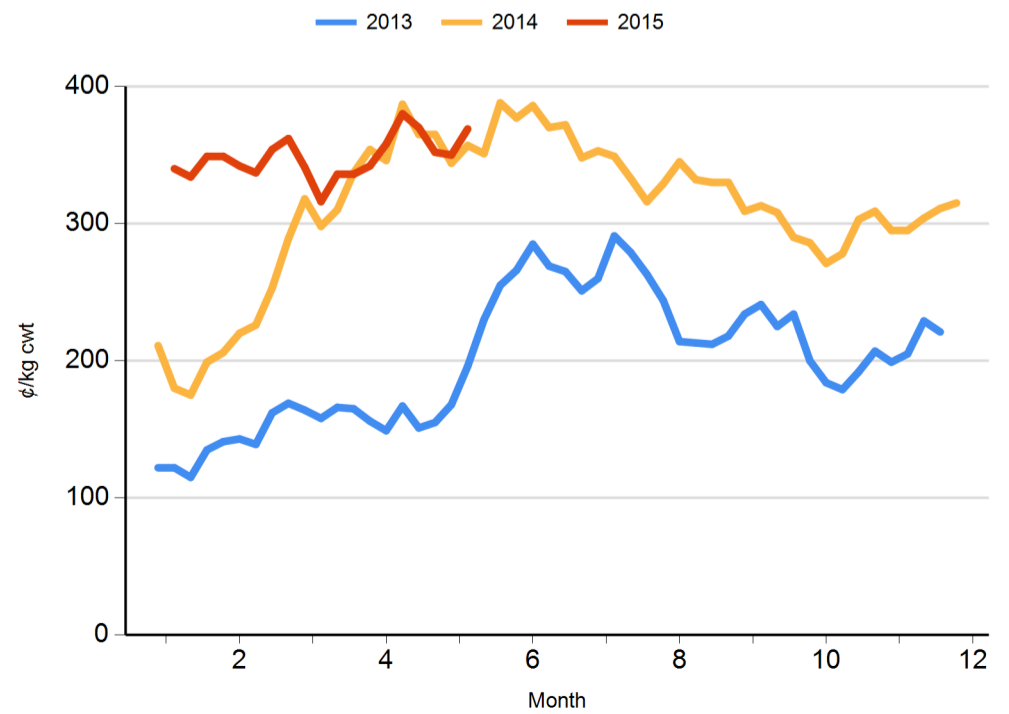
Trade lamb



Heavy lamb



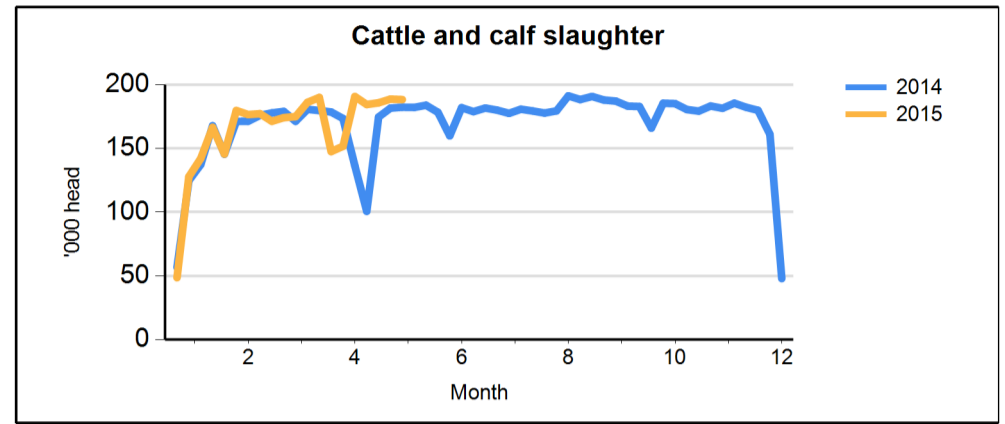
Mutton



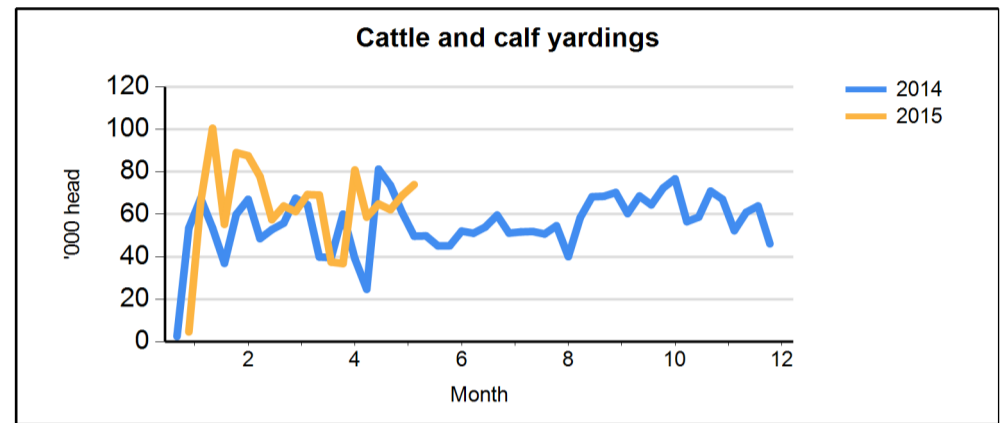


Cattle movements

Cattle slaughter		for w/e	15/05/2015	TW	LW	LY
Queensland	Cattle		89,355	90,749	86,135	
	Calves		364	413	559	
NSW	Cattle		40,673	41,584	38,697	
	Calves		3,381	3,282	5,094	
Victoria	Cattle		31,487	30,531	30,708	
	Calves		7,351	6,833	7,025	
SA	Cattle		10,331	10,141	8,740	
	Calves		65	61	103	
Tasmania	Cattle		5,080	4,545	5,065	
	Calves		282	615	264	

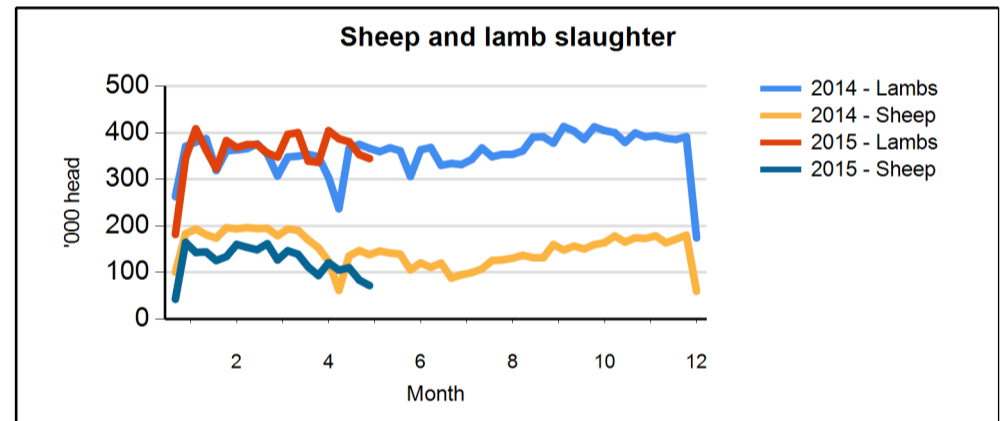


Cattle saleyard throughput		for w/e	21/05/2015	TW	LW	LY
Queensland	Cattle		22,546	21,403	14,300	
NSW	Cattle		28,668	27,871	17,644	
Victoria	Cattle		16,915	13,870	12,619	
SA	Cattle		3,747	3,008	2,753	
WA	Cattle		1,868	2,516	2,100	
Tasmania	Cattle		240	275	280	

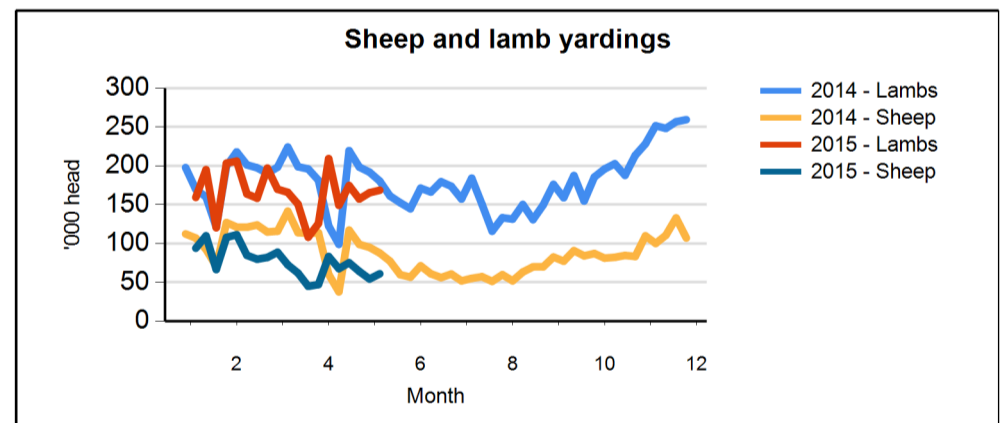


Sheep and lamb movements

Sheep and lamb slaughter		for w/e	15/05/2015	TW	LW	LY
Victoria	Lambs		164,549	165,802	171,273	
	Sheep		35,394	36,680	47,757	
NSW	Lambs		84,804	84,833	95,440	
	Sheep		7,425	8,349	47,950	
SA	Lambs		79,584	82,730	80,833	
	Sheep		16,756	23,370	27,025	
Queensland	Lambs		66	4,505	6,055	
	Sheep		8,820	11,510	9,637	
Tasmania	Lambs		15,478	15,131	12,752	
	Sheep		3,417	3,649	5,775	

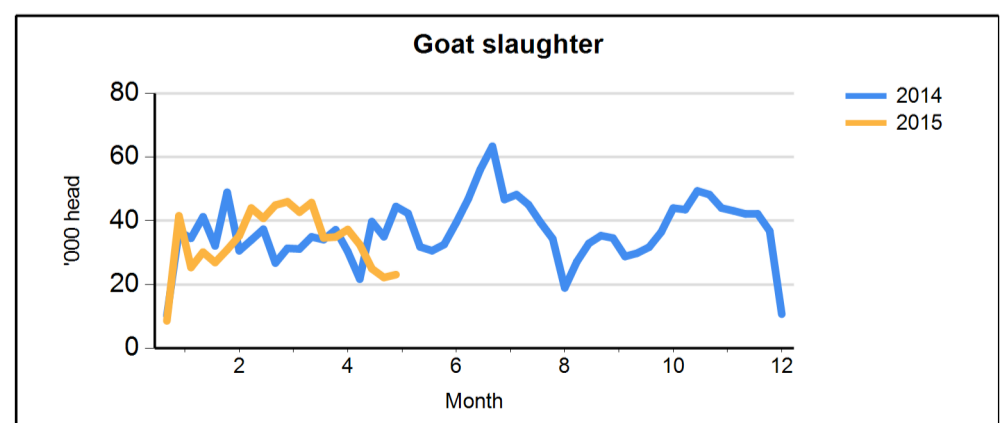


Sheep and lamb saleyard throughput		for w/e	21/05/2015	TW	LW	LY
Victoria	Lambs		46,758	50,459	45,601	
	Sheep		14,470	15,220	24,910	
NSW	Lambs		91,553	78,734	102,045	
	Sheep		32,160	24,264	38,210	
SA	Lambs		13,875	15,044	18,813	
	Sheep		2,791	3,292	5,875	
WA	Lambs		15,075	20,306	12,984	
	Sheep		11,000	11,082	17,453	
Tasmania	Lambs		1,400	950	1,030	
	Sheep		650	520	1,310	



Goat movements

Goat slaughter		for w/e	15/05/2015	TW	LW	LY
Queensland	Goats		8,809	10,347	16,458	
NSW	Goats		2,742	2,868	2,224	
Victoria	Goats		5,794	7,351	16,990	
SA	Goats		5,769	1,645	8,830	
Tasmania	Goats		2	nq	nq	





Over-the-hooks goat indicators (A¢/kg cwt)	TW	LF	LY
8.1-10kg	432	415	286
10.1-12kg	423	409	288
12.1-16kg	423	409	288
16.1-20kg	416	404	288
20.1kg+	423	409	288

Skin indicators - Lambs		TW	LW	LY
2" +	16.1 - 20kg	325	263	388
	20.1 - 24kg	563	450	575
	24.1kg +	681	575	725
1" - 2"	16.1 - 20kg	288	213	388
	20.1 - 24kg	450	388	525
	24.1kg +	575	513	600
0.5" - 1"	16.1 - 20kg	100	100	250
	20.1 - 24kg	325	183	325
	24.1kg +	363	275	500
New Season	16.1 - 20kg	250	250	500
	20.1 - 24kg	450	450	700
	24.1kg +	575	575	800

Skin indicators - Merino sheep (average 25 micron)		TW	LW	LY
1.5" - 2"	16.1 - 20kg	600	600	400
	20.1 - 24kg	625	600	625
	24.1kg +	1025	900	725

Eastern Market Wool Indicator (A¢/kg)	TW	LW	LY
AWEX E.M.I	1240	1243	1026
Source: Australian Wool Exchange Ltd			

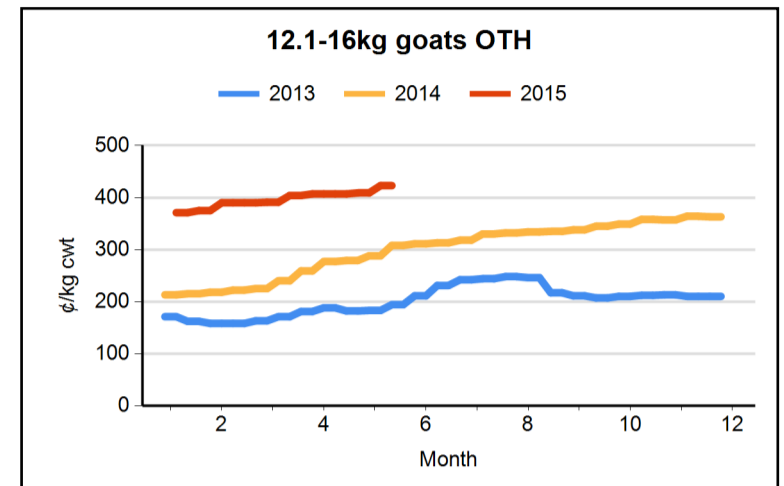
Fodder prices (A\$/tonne)	Cereal			Lucerne			Straw			Pasture		
	TW	LW	LY	TW	LW	LY	TW	LW	LY	TW	LW	LY
Darling Downs	nq	365	nq	nq	475	nq	nq	190	nq	nq	300	nq
Central West NSW	nq	230	nq	nq	345	nq	nq	nq	nq	nq	nq	nq
Goulburn Valley	nq	210	nq	nq	295	nq	nq	100	nq	nq	160	nq
South East SA	nq	240	nq	nq	310	nq	nq	110	nq	nq	200	nq
South West WA	nq	190	nq	nq	500	nq	nq	100	nq	nq	165	nq
Source: Dairy Australia												

Tallow (A\$/tonne, delivered in store)	TW	LW	LY
Prime - Melbourne	nq	nq	nq
Prime - Brisbane	nq	nq	nq
Bleachable fancy	nq	nq	nq
Source: Trade			

Grain prices - Darling Downs (A\$/tonne)	TW	LW	LY
Wheat	323	nq	375
Barley	313	nq	355
Sorghum	295	nq	325

Grain prices - Riverina (A\$/tonne)	TW	LW	LY
Wheat	nq	nq	295
Barley	nq	nq	258
Source: Profarmer Australia			

US imported beef prices (CIF)		TW	LW	LY
Bull 95CL	US¢/lb	239.8	245.3	219.5
	A¢/kg	665.0	675.3	521.4
Cow 90CL	US¢/lb	220.0	222.0	202.5
	A¢/kg	610.2	611.3	481.0
CC/CF 85CL	US¢/lb	199.0	201.0	195.5
	A¢/kg	552.0	553.5	464.4
Shank 90CL	US¢/lb	221.5	224.0	205.5
	A¢/kg	614.4	616.8	488.2
Trim 85CL	US¢/lb	198.5	198.5	194.5
	A¢/kg	550.6	546.6	462.0
Trim 80CL	US¢/lb	169.5	172.0	179.5
	A¢/kg	470.1	473.6	426.4
Trim 75CL	US¢/lb	157.5	158.5	168.5
	A¢/kg	436.9	436.4	400.3
Trim 65CL	US¢/lb	134.5	137.0	140.0
	A¢/kg	373.1	377.2	332.6
Outside flats	US¢/lb	280.0	277.5	227.5
	A¢/kg	776.6	764.1	540.4
Knuckles	US¢/lb	292.5	292.5	262.5
	A¢/kg	811.3	805.4	623.6
Inside cap off	US¢/lb	309.0	310.0	292.5
	A¢/kg	857.1	853.6	694.8
Source: Steiner Consulting Group				



PLEASE NOTE
US imported beef prices are now reported only in CIF terms.
They are no longer converted to FAS terms.
For a full dataset from January 2000 to today
[CLICK HERE](#)

